



The Rockcliffe News

June 2020

**Rockcliffe Park
Residents Association**
www.rockcliffepark.ca

BOARD OF DIRECTORS

Russell Gibson, President
rgg@gibsonslaw.com

Daniel Goldberg, Vice President
Daniel1973@me.com

Darrin Reesal, Vice President
dreesal@yahoo.com

John Butterfield, Treasurer
johnbutterfield@ymail.com

**Michele Collum-Hayman,
Secretary**, secretary@rockcliffepark.ca

Peter Lewis, Past President
plewis42@yahoo.com

Chris Barker
cb@rhodesbarker.com

Susan d'Aquino
spdott@gmail.com

Jean-Guy Dumoulin
jeanguy.dumoulin@gmail.com

Caroline Gingras
carogingras80@hotmail.com

Kay James
RPRANW@gmail.com

Louise Malhotra
louisemalhotra@gmail.com

Gouhar Shemdin
gshemdin@yahoo.ca

Susan Taylor
Susan.taylor@sympatico.ca

Mark Willcox
Willcox@rogers.com

Board meetings are held monthly and are open to all. See calendar for dates and times. Comments and suggestions are always welcome. Correspondence to Board members and any enquiries for administration purposes may be addressed by email to secretary@rockcliffepark.ca.

DATES TO REMEMBER

Welcome to Summer! Please look inside this issue or check out our website, www.rockcliffepark.ca, for news of cancellation or postponement of activities and events. Stay safe!



Seen recently in Rockcliffe Park. Photo courtesy of Susan d'Aquino.

RPPS Drive-by:

The staff at Rockcliffe Park Public School (RPPS) recently did a drive through the neighbourhoods where their students live. No special reason, other than to let the kids and their families know they miss everyone. RPPS families were so happy to see their teachers and assistants waving and smiling at them – it created a very happy memory for all. See the story and more photos on page 12.



PRESIDENT'S LETTER



RPRA Update

COVID-19 Due to COVID-19 restrictions, our May Board meeting occurred virtually. For now, there will be no public delegations to the Board; instead, those interested in communicating with the Board are invited to submit their comments in writing to secretary@rockcliffepark.ca. New approaches to sharing information and for the conduct of Board meetings are being considered, given that in-person gatherings will not be occurring at the Community Centre for the foreseeable future. Please do not hesitate to contact me with suggestions and comments on RPRA activities at president@rockcliffepark.ca, or write a letter to the editor of the newsletter at editor.rockcliffenews@rockcliffepark.ca.

As with many organizations, we are reviewing events for the fall season ahead to determine which may proceed and which cannot on account of the strict measures curtailing activities during the COVID-19 pandemic. Regrettably, due to current circumstances, the Rockcliffe Park Spring Book Sale will not proceed in April 2021, but we hope the committee will be able to hold a sale after Labour Day, on or about September 11 and 12, 2021, with the regular Sale resuming in April 2022. For a calendar of RPRA events and updates, please continue to consult our website, www.rockcliffepark.ca.

The Pond The Pond committee has provided me with an update on the work that the City of Ottawa is performing on the entry and stairs to the Pond. The end result will be to significantly improve access with the use of natural stone of a more consistent height and a suitable railing for the stairs. Temporary stairs may be constructed with barriers in place until the work is completed. Further, a section of matching black chain link fence will be installed from the pond-side corner posts to the edge of the stair entry point. Our contact with the City has kindly undertaken to raise the RPRA's perennial request with City of Ottawa's By-law and Regulatory Services for proactive monitoring of the site.

Website I am pleased to report that the By-laws of the Association and articles of the corporation have been posted on our website, together with the contact information for the new executive and the new members of the Board of Directors. Also new on the RPRA website are the minutes of the last RPRA Board meeting.

New to *The Rockcliffe News*: Letters to the Editor

The objective of this newsletter is to inform residents, foster constructive debate and assist the RPRA in the formulation of a consensus in the community on local issues that fall within the RPRA's mandate and purview. This issue contains a "Letters to the Editor" feature on a trial basis.

Letters to the Editor should focus on matters of current, or possibly historical, interest to residents of Rockcliffe Park, or activities, events or issues currently engaged in by the RPRA. For the time being, the Letters to the Editor Board for reviewing letters shall be comprised of the RPRA Executive and the newsletter editor. We will publish additional guidance on our website regarding editorial discretion in editing, printing, or refusing to print submissions. Please review the guidelines on the next page and send submissions or any questions to editor.rockcliffenews@rockcliffepark.ca. The deadline for submissions is the 15th of the month preceding publication.

Take care and be well!

Russ Gibson, 23 May 2020

The Rockcliffe News would like to send out a special thank you to the members of our volunteer delivery crew, who make sure all residents continue to receive the newsletter during the pandemic.

THE ROCKCLIFFE NEWS • VOLUME 20 • NUMBER 3

The Rockcliffe News, the newsletter of the Rockcliffe Park Residents Association (RPRA), is published six times each year: February, April, June, August, October and December. Submissions pertaining to the Village are welcome by mid month before publication. Copy may be edited for clarity, length and content. Paid advertising is not accepted. Current and past issues are posted on the RPRA website, www.rockcliffepark.ca. Editor: Cynthia Hamady, editor.rockcliffenews@rockcliffepark.ca.

LETTERS TO THE EDITOR

In this issue we are introducing a new feature on a trial basis. Letters must comply with RPRA's editorial policy, listed here.

RPRA Editorial Policy

- The Letters to the Editor Board (herein referred to as “the Board”) shall be comprised of the Executive of the RPRA, together with the newsletter editor;
- Letters may be edited for brevity, content, relevance, where contrary to law (or where it may expose the RPRA to liability), or otherwise at the discretion of the Board. When edits are significant, the submission may be referred back to the author for approval before publication;
- The Board shall determine the acceptable length of letters for publication, generally not to exceed 200 words. Articles and photos, if any, are subject to the exercise of the Board's editorial prerogative over content and layout;
- Limit content to one or two clear points;
- Don't send the same letter repeatedly;
- Letters that are abusive of people or organizations will not be considered for print;
- Letters will be edited as appropriate to maintain accepted standards of language, probity, and respect for other points of view;
- The RPRA may publish a reply to letters, consult others for advice on matters involving accuracy of fact(s), and solicit other points of view on an issue;
- Final printer-ready drafts of an issue are submitted to the president of the RPRA for approval at least two days before the due date for submission to the printer and discussion with the editor on content is undertaken only by the president or nominee (usually the RPRA Board secretary), who has responsibility for final sign-off to publish;
- The Board may refer a submission to the Board of Directors of the RPRA when considered advisable to do so;
- The editor welcomes letters from members of the community expressing their views and opinions about local issues, but will not publish anonymous letters or letters deemed to be for primarily commercial purposes;
- This policy may be amended and updated from time to time by the RPRA, the RPRA Executive or the Board without notice; updates will be posted on the RPRA website, www.rockcliffepark.ca.

To the Editor:

Thank you for continuing the RPRA newsletter! A couple of items occurred to me, upon reading the April 2020 issue.


1. If you continue in the next newsletter to provide info on online ordering, you might add that Books on Beechwood can still do book orders (for contact-free pickup, otherwise books get delivered via Purolator or Canada Post), plus it is possible to purchase downloadable audiobooks through them via <https://libro.fm/?bookstore=beechwood>. Let's support them rather than Amazon.

In a similar vein, my household is enjoying the free Ottawa Library Access to Hoopla for some great drama/doc series not available through Netflix.

2. I read with interest the article under Environment on leaf blowers. The authors could have added that leaf blowers can have negative impacts on insects that are declining as it is. This came out of a German government report last fall (see <https://www.dailymail.co.uk/sciencetech/article-7697485/Leaf-blowers-fatal-insects-avoided-German-government-warns.html>). This is another argument for restricting use of leaf blowers. Just pass along the link, as the authors did not provide their email address.

Another topic that might be addressed in future issues is light pollution. There is no need for Rockcliffe homes to have numerous outdoor LED lighting on throughout the night. LEDs are particularly bright and have replaced earlier softer lighting because of their lower energy cost. But folks can have security lighting (with motion detectors) over a door if they are concerned about burglaries. Night-time light pollution messes with our sleep and takes away enjoyment of the night sky, not to mention having a negative impact on plants and wildlife from insects to birds, and even fish. There is a lot of science on this topic.

Frances Pick, 11 Ellesmere Place, Rockcliffe Park



Talk to us! We welcome your letters and comments. Please send submissions by mid-month preceding publication (the 15th of January, March, May, July, September and November) to editor.rockcliffenews@rockcliffepark.ca. Photos or illustrations (with proper credit) may also be included. Please supply contact information. Additions and updates to the editorial policy will be posted on our website, www.rockcliffepark.ca.

The RPF Thanks Bonnie Robinson



It is not without a tinge of sadness that we extend our heartfelt thanks to **Bonnie Robinson** (in photo at left, with husband Andy), who has stepped down as Chair of the Rockcliffe Park Foundation (RPF) after more than a decade of service. Bonnie succeeded **Tom Delworth** in early 2010 and immediately brought her irrepressible drive and focus to raise the RPF to new heights. The fund has grown healthily over the years thanks to Bonnie's success in driving the RPF annual appeals and will benefit long into the future from the legacy-gifting program that she has made a priority. Bonnie's grace and organization have made volunteering with the Rockcliffe Park Foundation the positive experience it is and her commitment that the RPF and the Rockcliffe Park

Residents Association work together in joint planning discussions has greatly enhanced our ability to ensure our neighbourhood has the programs and initiatives that help it remain the beautiful and unique place that it is. Bonnie has graciously agreed to continue on the RPF as Past Chair. Thank you, Bonnie, and to her family and husband **Andy**, who support all the volunteer hours she so generously dedicates to our neighbourhood. Photo: © Photo by Lois Siegel

From Our Diplomat Neighbours

We would like to share a recent tweet from Ambassador **Kareen Rispal** of France (with a number of our neighbours). We truly do stand together!



Kareen Rispal @kareen_rispal · Apr 24

The 🇪🇺 European diplomatic missions in 🇨🇦 Canada extend an heartfelt thanks to all the courageous 🧑‍🚒🧑‍🚒🧑‍🚒🧑‍🚒 who have been working on the front-lines against #COVID19 to protect & support 🇪🇺 and all citizens.

Thank you ! Merci ! 🙌👏

#WeStandTogether #WeApplaud



A Taste of Indonesia

During these stressful times, many have been turning to cooking to nourish both body and soul. To this end, we are introducing a new series of recipes brought to you by our wonderful diplomatic neighbours and our **Dining with the Ambassadors** (DWA) committee. DWA is the unique biennial fundraiser that brings neighbours together and raises funds for the Rockcliffe Park Foundation (RPF). The RPF supports the many incredible Rockcliffe Park Residents Association (RPRA) projects that do so much to preserve the natural beauty of our neighbourhood and make our favourite community events and traditions possible.

First in the series is a recipe kindly provided by our neighbour **Yanti Jailani**, the wife of the Ambassador of Indonesia, His Excellency **Abdul Jailani**. Here is Yanti's recipe for the Indonesian fruit cocktail, *Es Teler* (pronounced "ice tell-UR"). This refreshing, icy, non-alcoholic cocktail of coconut, jackfruit and avocado is the perfect dessert to have on a hot day. Most of the ingredients may be found in the canned fruit aisle of local Asian grocers (such as Green Fresh on Montreal Road). Serves two or three as a cool drink or dessert.

Es Teler

Ingredients:

- 1 Young Coconut – also known as *ma-prao orn* – coconuts with an ivory shell. The flesh of the coconut is known as coconut meat. The coconut meat can be frozen shredded, canned (do not drain), or fresh. If using fresh, rip out the meat with a spoon.
- Coconut Water, if using fresh coconut
- 1 can Yellow Jackfruit in syrup, drained (or fresh if you can find it), sliced lengthwise into thin strips
- 1 can Palm Seeds in syrup, drained, rinsed and cut in half
- 2 ripe Avocados, cut into bite sized pieces just before serving (to prevent browning from oxidation)
- 2 or 3 cups Crushed Ice
- Sugar Syrup to taste (*Note:* To prepare syrup, mix equal amounts of sugar and water, then boil the mixture until the sugar is completely dissolved. Cool, then add a bit of vanilla essence to enhance the flavour.)
- Sweetened Condensed Milk to taste

Preparation:

In a bowl, mix together the young coconut with the water from the package or can (if using fresh coconut meat, add some coconut water), yellow jackfruit, palm seeds and avocado. Add sugar syrup to taste and crushed ice to cool the drink. Mix well. Pour into glasses or small individual bowls. Drizzle top with the condensed milk. Add more if you have a sweet tooth! Serve immediately. (*Photo: Wikipedia*)



The Rockcliffe Park Foundation is a charitable organization established at the time of amalgamation with the City of Ottawa to manage an endowment, the interest from which is used to help fund community projects and programs in three areas of focus: the conservation of the environment; preservation of the heritage character of the Village; and promotion of a sense of community for all residents.

THE 2020 ROCKCLIFFE PARK FOUNDATION BOARD: *Executive:* Sarah Baxter, Chair

Ryan Kilger, Vice-Chair | Roy Williams, Treasurer | Jane Newcombe, Secretary **Board Members:** Anthony Carty, Alexandra Colt, Alison Green, Heather Hickling, Fiona Murray, Jane Panet, Bonnie Robinson, Paul St. Louis, Donna Taucer

HERITAGE MATTERS

Proposed Lighting of Tennis Courts in Rockcliffe Park

This column in the April newsletter detailed the Rockcliffe Lawn Tennis Club (RLTC) plans to light two of its courts to extend its playing hours after dark in an effort to be more competitive with other tennis clubs, and the potential issues arising from that plan. The president of the RPRA had written to the club's executive asking it to respect Rockcliffe Park's long-standing heritage character, which is marked by subdued lighting, and the legitimate interests of close neighbours who would be most directly affected. Since then, the tennis club has circulated an information package setting out the lighting design, and has posted documents and other information on its website (see www.rltennis.ca/lighting-project-draft.html). It would entail 24 LED floodlights of 200W – four each on six 30-foot-high poles facing Lakehurst Road, where there is currently one softly-lit street light.

Many residents have written to the club and to our City Councillor, **Rawlson King**, voicing their strong opposition to the club's plan. I am told that the tennis club, the RPRA and Councillor King have also received letters of support for the lighting plan from residents.

On May 4, Councillor King informed us that the club's heritage permit to install lighting had expired. It was issued by the Heritage Department two years ago and expired during the COVID-19 crisis. The club cannot proceed with its current lighting project, although it can re-apply again for a new permit. RLTC president **Louise Malhotra** sent an email letter to club members and Rockcliffe neighbours on May 2. She said the club executive will take a pause, re-evaluate feedback from neighbours, and encourage additional discussion on both sides. She suggested discussion should take place after COVID-19 restrictions are lifted. **Lisa Cogan**, on behalf of some neighbours, responded to the club president. She said that in light of the expiry of the heritage permit, the neighbours in question will withdraw from the legal action that they had reluctantly undertaken in March. She agreed to a post-pandemic, jointly-convened meeting between the tennis club executive and neighbours, and hoped that the club would listen to the voices of neighbours and begin to rebuild damaged relationships.

Some are urging RLTC, if playing after dark is important to keep membership up, to make arrangements with the close-by Ottawa New Edinburgh Club, which is set apart from any residential area and already has night lighting.

Susan d'Aquino, Chair, RP Heritage Outreach Committee

SPRING BOOK SALE

Spring Book Sale: Where Do We Go From Here?

The weather in April was frequently cold, wet and miserable – typical for this time of year in Ottawa – but once again, the last weekend would have been perfect for the Rockcliffe Park Spring Book Sale that never was. The sun shone and the temperature reached double digits. Would we have had another record-breaking event? Who knows? With thousands of quality books already sorted and priced, the tent booked and final preparations well underway, we were anticipating a highly successful sale when the pandemic brought everything to a halt. We had hoped, back in March, that we might be able to hold a smaller sale this September, but that is not going to be possible, either. So, where do we go from here?

Sale Managers **Linda McDonald**, **Jane Newcombe** and **Kevin Phillips** have had to make some difficult decisions with respect to the future of the Sale. Underlying these decisions are a few critical issues such as the safety of our volunteers and our clientele, the willingness of people to attend and, of course, City of Ottawa decisions regarding the opening and operating of the Library and Community Centre, and rules about large gatherings.

We have decided not to proceed with the Sale in April 2021. It is unlikely that circumstances will have improved sufficiently for us to hold the Sale safely, in the absence of effective treatments or of a vaccine being widely available soon enough. Our preparations usually begin at least six months ahead.

Still, we hope there will be a sale next year, just not in April. We are tentatively planning for our next 'Spring Sale' to be held in September 2021, the weekend after Labour Day. This is subject, of course, to safety considerations and permission from the City. This will likely be smaller for many reasons, including but not limited to the 'new normal' with respect to gatherings.



In the meantime, if you can find a place to store potential donations, please hang on to those books (and AV materials), rather than throwing them away. We will be looking for your donations as soon as it is considered safe for us to process them.

Stay safe, stay healthy and keep your distance – at least for now. *Carolyn Brereton*

RPPS BOOK FAIR

Please Keep Book Fair Donations at Home Until Further Notice

The annual Book Fair at Rockcliffe Park Public School is scheduled for November 6 to 8, 2020. However, as of publishing time, the Book Fair committee is unsure whether this year's sale will be able to take place, given the current public health situation with COVID-19. With all Ontario public schools closed until May 31, 2020, Book Fair is waiting to hear from Principal **Heather Mace** and School Board officials about the future of the sale. Check our website, rockcliffeparkbookfair.com, for updated Book Fair news.

Meanwhile, the book donation bins across from the main doors of the school remain CLOSED for the safety of both our volunteers and clients. Our volunteers cannot access the school to store donations. Any books left outside the bins will be put in the garbage. So please: if you are a book lover, hang on to your donations until we announce that we are accepting books again!

The Book Fair at Rockcliffe Park Public School is run by a dedicated team of parent volunteers, and supported by the whole RPPS team of staff, students and families. I would like to thank all of our volunteers, both from the school and the community, for their hard work in making our school's largest fundraiser possible.

After three years as Chair of Book Fair, I am stepping down at the end of June. The 2020-21 school year will be my family's last at RPPS, and I look forward to advising the committee on the running the school's main fundraiser.

RPPS parent **Bill Salminen** will be the new Book Fair Chair. Bill has a background in event organization and running large teams with the military. I look forward to showing Bill the ropes of this incredible fundraiser. Other changes to the Book Fair committee for 2020 include **Jennifer Domonkos** and **Shannon Shamsuzzoha** as the new Café team leads, succeeding **Natalie Goto**. **Dave Mackie** is moving away from the Book Donation team lead into the role of Book-keeper, and **Justin McCarty** is our new Communications team lead, replacing **Sara Dobbin**. **Keumnin Lim** takes over as Volunteer Coordinator from **Annabelle Giroux Bibeau**. The entire Book Fair committee is thrilled to have these parent volunteers join our team. New volunteers are always welcome!

Get the latest Book Fair news by following us on Facebook [@rockcliffeparkbookfair](https://www.facebook.com/rockcliffeparkbookfair), Twitter [@RPPSBookfair](https://twitter.com/RPPSBookfair) and at rockcliffeparkbookfair.com. *Christina Leadlay*

ELTOC



News from ELTOC (English Language Tutoring for the Ottawa Community)

The Board of Directors and the staff at English Language Tutoring for the Ottawa Community (ELTOC) would like to thank all local residents for their support over the last two years at their Fundraising Teas. Unfortunately, this year, due to the new health guidelines, we are unable to arrange an 'actual' event!

ELTOC supports 200 students annually by providing English Language tutoring to newcomers free of charge, to give them the skills to manage in their new home country and build connections in their community.

Under the new COVID-19 rules, we are working hard to continue to provide tutoring online and hope to facilitate this further with the use of different software and teaching aids. Immigration, Refugees and Citizenship Canada provides major funding for this initiative, but we still need to fundraise \$5,000 annually to cover some delivery costs such as teaching materials.

If you would like to read about our latest news, please see our website: <https://eltoc.ca/>. Should you wish to make a donation to support our program, you will receive a tax receipt for all gifts over \$20 and enjoy the happiness of helping newcomers feel welcome in our community.

If you have any questions, please call **Liz Heatherington** (Board Member) at **613 745-4677**.

Many thanks for your interest!

*ELTOC, 108-404 McArthur Ave., Ottawa, ON K1K
1G8 Registered Charity Number: 131666448RR0001*



MESSAGES FROM OUR POLITICIANS

Messages from our politicians – **Jim Watson**, Mayor, City of Ottawa; **Mona Fortier**, Member of Parliament for Ottawa-Vanier; **Rawlson King**, Councillor, Rideau-Rockcliffe Ward; and **Lucille Collard**, MPP, Ottawa-Vanier – are featured in full on our website, www.rockcliffepark.ca, as we receive them. An abridged version of Mr. King's column will continue to appear in the newsletter.

Check out Mayor Watson's column on the many residents and businesses in our community who are coming forward to assist others in this time of great need. Our new MPP, Lucille Collard, introduces herself to her constituents and supplies contact information. Check out these columns and more on our website.

CITY HALL



*From the desk of Rawlson King
Councillor, Rideau-Rockcliffe Ward*

Rockcliffe Park Updates

My office has been working hard on many issues during this public health crisis. After a joint appeal with other Councillors to consider the partial re-opening of green space to help with the physical and mental health of residents, the City will now allow use of some areas in City parks and beaches. I also urged the province to re-categorize community gardens as essential services and was successful.

However, as the Province makes moves to begin a phased approach to opening up, I do want to encourage residents, as enticing as the weather is, to continue to remain vigilant and practice physical distancing, continuing with hand hygiene and, where appropriate, wearing a mask in public places where it may be difficult to maintain separation.

Food security is an ongoing priority during this emergency, and I hope that you will consider supporting our local food bank, the Rideau-Rockcliffe Community Resource Centre. We have seen levels of food bank use increase by more than 50 percent over the same time last year, with many people heading there for the first time as a result of job losses. A new initiative started by one of your own residents is "Local Food for the Local Food Bank," where your dollars go to buying food from great local businesses like Epicuria and Bread and Roses Bakery, which is then delivered to those in our neighbourhood in need. To donate, go to www.canadahelps.org, search for "Rideau Rockcliffe," and in the drop-down menu select "Local Food for our Local Food Bank."

By the time you read this, City Council will have voted on its growth management strategy, which includes a proposed expansion of Ottawa's urban boundary. I wish to let residents know that I am intending to vote against expansion. I also want residents in our ward to understand what "holding the line" will mean. A policy position paper outlining my thoughts is available at www.rideau-rockcliffe.ca.

QUEENS PARK



Welcome Lucille Collard, Our New MPP for Ottawa-Vanier

Our new MPP for Ottawa-Vanier, a member of the Ontario Liberal Party, was elected to the Legislative Assembly of Ontario in a by-election on February 27, 2020 – just before the pandemic hit. She looks forward to meeting with constituents once physical distancing measures are relaxed, but for now, you may communicate with her office by phone at **613-744-4484**, or by email at LCollard.mpp.co@liberal.ola.org. Prior to her election to the legislature, Collard worked as a lawyer and as a trustee and board chair of the Conseil des écoles publiques de l'Est de l'Ontario. Find her messages on our website, www.rockcliffepark.ca. You can also follow her on Twitter, twitter.com/lucillecollard; Facebook, www.facebook.com/LucilleCollardLiberal; and Instagram, www.instagram.com/lucillecollard.

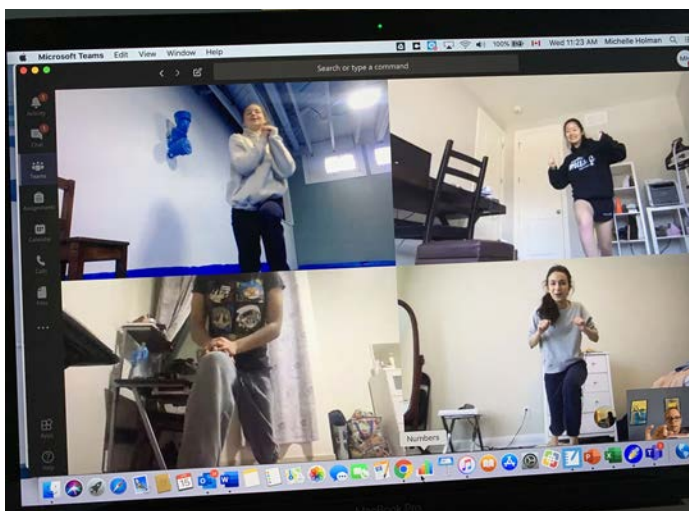
SCHOOL REPORT

ASHBURY
COLLEGE



Distance Learning @ Ashbury

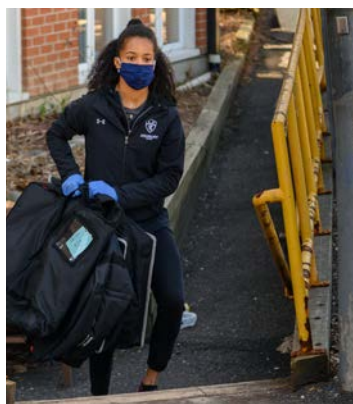
When the Ashbury campus closed in mid-March due to COVID-19, students and faculty moved face-to-face learning online to a new distance learning model. Distance learning provides the opportunity for students to continue the Ashbury experience, and the school year, at home. Through a combination of technology and creative off-screen programming, students remain connected with teachers, advisors and their classmates by engaging in meaningful ways.



Ashbury follows a daily schedule similar to a typical school day. Faculty deliver coursework with a flexible approach for our diverse student body. With learners currently located around the world, time zones are considered, with class recordings to make it possible to check in outside of scheduled class times.

Course delivery methods are different for each grade and course level, and lessons may be task-oriented or interactive. Students balance screen time with other activities, including going outdoors where possible, and are supported by various wellness outreach initiatives.

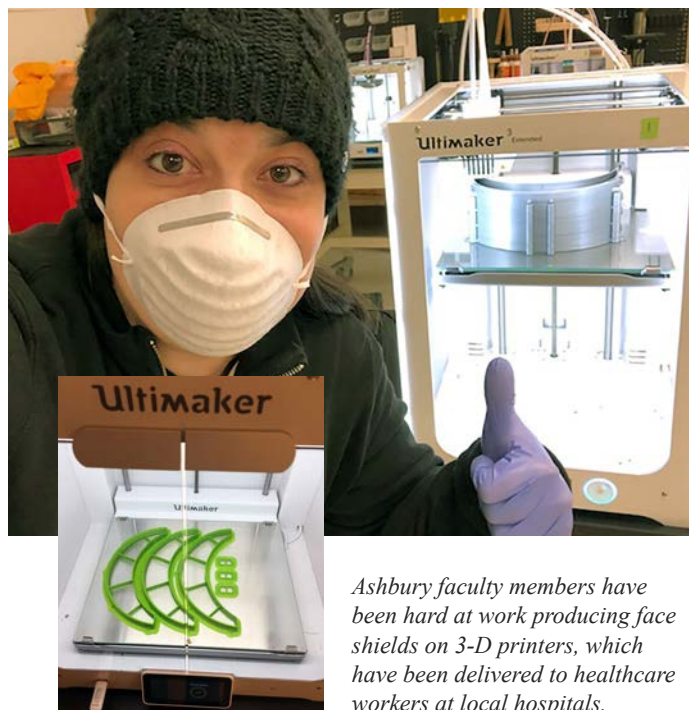
Please Note: Despite COVID-19 school closures, Ashbury is committed to offering a strong summer program, whether it be on campus or through distance learning. Current preparations include finalizing distance learning camps. Visit <https://summer.ashbury.ca/collections/camps> for more information. If you have any questions, please send an email to summer@ashbury.ca.



Helping a Community in Crisis

Ashbury has been busy delivering food to assist the Rideau-Rockcliffe Community Resource Centre. Staff from Ashbury's food services team loaded several vans full of food from the school's cafeteria for the neighbourhood's emergency food bank. Other staff have transported hot meals from local restaurants to some of the City's most vulnerable.

While most staff have been working at home, some faculty members have been busy in the school's science labs, utilizing 3-D printers to produce PPE (personal protective equipment) for frontline staff at CHEO and the Ottawa Hospital. At the time of publication, more than 400 face shields have been produced and delivered to healthcare workers.



Ashbury faculty members have been hard at work producing face shields on 3-D printers, which have been delivered to healthcare workers at local hospitals.



WILDLIFE NOTES

A male Robin first appeared in our garden on March 18, and has been feeding on the lawn ever since. Now a nest on a ledge under our carport has a Robin sitting tight – so the female has completed its clutch of eggs. **John Brooks** found four Robin nests of this spring under his deck; two empty, one with one egg, one with two eggs. Those nests are side by side – see his photo below. Each pair needs just one nest, so what was going on? Was the first nest completed and then the owner driven from the territory by another pair? Now there are no eggs – my guess is that they were taken by a Red Squirrel.



I first noticed a Phoebe perched in our garden on April 25. Each spring I'm surprised at how early these little flycatchers return because I can't see any of the flying insects they eat exclusively in spring and summer. Perhaps they are finding insects and spiders on tree bark.

The **Rowley** family at 245 Sylvan Avenue bordering McKay Lake has each year recorded the date that the McKay Lake ice went out. This year the ice-out date was April 13. In 2019, the date was April 25 and in 2018 it was April 27. The family has records of ice-out dates going back to 1941. Prior to 1970, the dates came from the **Hooper** and **Gill** families. The criteria for selecting the ice-out date changed in 1970 so that ice-out dates before that year may be from one to three days earlier than if the post-1970 criteria were used.

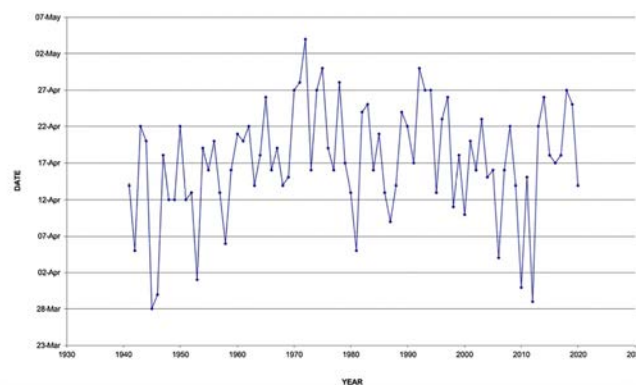
The interest in noting the ice-out date of the lake is that it marks a special annual moment for the lake's fauna and flora.

With the ice off, it is as if the lake takes a deep breath of oxygen and the water mixes top to bottom so that the temperature is uniform. This means nutrients that have accumulated at the bottom over winter are recirculated. This combined with longer days and more sunshine reaching deeper into the water allows aquatic plants and algae to start to grow again. At this

time of the year the lake may even appear slightly green as a result of this new growth. Shortly after this spring pulse in algae and plants, small crustaceans in the water start growing well and in early summer these are critical as a food source for young-of-the-year fish.

The ice-off time can be quite variable from year to year but one trend seen across the Great Lakes region is that the ice-off time is coming earlier in the spring and ice-on is much later than it was historically. An analysis of the Rowley-Hooper and Gill data would be interesting to see if this is also the case for McKay Lake. Climate change at our doorstep.

ICE OUT DATES for McKay LAKE 1941 to Present



Two crows, sitting within a few feet of each other on May 19 in a low bush, were cawing violently and repeatedly at a fox that was walking by on the grass within ten feet of them. During the rest of the year when a fox comes into our garden the crows are in the tree tops, paying no attention to the fox – knowing it can't climb to get them. What was different this time? My interpretation is that crows know perfectly well that foxes can't climb trees. But the spring season is different because young crows are just learning to fly, and they can flap awkwardly trying to balance, sometimes in bushes where they would be easy pickings for a fox. But in this case, there were no young crows, so why did the adults risk getting close to a fox? My guess is that crows are smart and know that this fox behaviour is to be loudly discouraged because of its potential danger.

Anthony Keith, Frances Pick; graph by Tara-Leigh Mierins
23 May 2020

Fletcher Wildlife Garden Annual Native Plant Sale POSTPONED

Originally scheduled for June 6, the sale has been postponed due to COVID-19. Check for updates on the Garden's website, <https://ofnc.ca/programs/fletcher-wildlife-garden>.

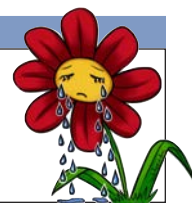


Illustration: www.deviantart.com/jadekingfisher/art/Sad-Flower-666475492

JANE'S WALK

Jane's Walk Ottawa-Gatineau Postponed to September 12–13

Alternative “Walks” to be Shared This Spring



In light of the COVID-19 pandemic, the local Jane's Walk festival of walking tours will be postponed until September 12 and 13, 2020. In the meantime, the group will be offering various new ways to explore our communities while respecting physical distancing.

The essence of Jane's Walk – connecting people and their communities – is more important now than ever before. While people must stay apart physically, Jane's Walk Ottawa-Gatineau hopes to create new ways to connect and support each other through this isolating time.

Whether that is a virtual walking tour, a photo essay of a tour route, a scavenger hunt or another innovative idea, organizers hope to provide access to an array of alternative “walks” throughout the spring via janeswalkottawa.ca. Walk leaders and new volunteers are encouraged to flex their creativity and support this movement to create connections by dreaming up a new way for people to experience their walking tour. Have an idea? Get in touch by emailing jane@janeswalkottawa.ca.

Jane's Walk is a pedestrian-focused event that improves urban literacy by offering insights into planning, design, local history and civic engagement through the simple acts of walking, observing, and discussing. Last year, 3,000 people joined this “sidewalk ballet,” a community-driven festival featuring dozens of walking tours in celebration of the ideas of late author and urbanist **Jane Jacobs**. Jane was an activist who changed how we design and think about cities by promoting community vitality and a neighbourly street life. The festival normally takes place over the first weekend in May to mark Jane's birthdate (May 4, 1916).

In its 12th year, Jane's Walk Ottawa-Gatineau hopes to offer more than 60 different walking tours for you to choose from in September 2020. Mark your calendars for September, and in the meantime, get creative and dream up a “walk” in a new format to share online!

To get updates on the festival, visit janeswalkottawa.ca, and follow Jane's Walk Ottawa-Gatineau on Facebook, Twitter (@JanesWalkOtt) and Instagram (@JanesWalkOttawa).

RECREATION



Ottawa New Edinburgh Club (ONEC): Tennis, Anyone?

ONEC is pleased to announce the start of its 2020 season: the first tennis ball was served on May 23... with many more to come! Tennis and boat clubs were recently given the green light to resume some activities (while instituting and respecting COVID-19 protocols), so ONEC tennis is up and running, and we invite new members to join us for the fun. Find club information, membership details and forms on our website, www.onec.ca.

Singles and doubles (restricted to pairs of members of the same household) are allowed. Court separation will be implemented. The tennis pavilion will be closed and no access will be permitted by members for any reason, except for access to the washrooms on an emergency basis and emergency aid. Members are asked to come in the clothing they plan to wear on the courts, carrying all provisions they require, such as a water bottle, since access to the water fountain is not permitted. Players are asked to not change ends during match play, to bring their own tennis balls and mark them so as to be readily identifiable, and to not pick up their partner's balls with their hands – use a racquet or kick the ball over. Guests will not be allowed for the time being. These are some of the new rules; additional precautions and procedures are detailed on the ONEC website. Policies will be reviewed and updated every two weeks.

The courts open at 8:00 a.m. and the last booking is the 9:00-10:00 p.m. slot. Note that ONEC has five clay courts with lights. Reservations are required, and may be made on our new online booking system for members at www.onec.ca.

ONEC is tentatively working towards an opening of reduced water sports operations and day camps in June and July, respectively. More information will follow shortly. Check our website; if you have questions or need further details, contact the club at **613 746-8540** or email info@onec.ca.



END NOTES

Maskmaker, Maskmaker, Make Me a Mask

This is a 'Shout Out' to two groups of sewists in our area who are busy sewing personal protective cloth masks. One group has six volunteer sewists, based in Rockcliffe Park and Lindenlea. This group makes the masks in exchange for donations to the Ottawa Food Bank. They have currently sewn over 750 masks and have reached the \$15,675 mark in donations. Fifty of the masks were donated to the City of Ottawa to distribute to the homeless.



Another group, based in Manor Park with sewists in Rockcliffe Park, Lindenlea and as far away as Kanata, has been making masks that are being distributed to the Ottawa Hospitals for use in lower risk areas to preserve the supply of standard masks and to protect healthcare workers as they are moving about in the hospital during shifts. The masks are not used for direct patient care when proper Personal Protective Equipment (PPE) is worn. Other recipients of the cloth masks include the Rideau-Rockcliffe Community Resource Centre (they run the food bank for our area), low-income seniors, individuals with disabilities, and housing support staff and seniors in Ottawa Community Housing buildings within Manor Park, Wabano's outreach services for seniors, Harmer House Seniors Living, Ottawa Inner City Health (healthcare for homeless), essential workers (housing), Ottawa Mission, medical clinics and out-patient psychiatry patients, to name a few.

The most heartwarming story comes from CHEO and the Neonatal Intensive Care Unit. Parents could not visit their newborns there because medical-grade masks could not be spared. Some of the first 80 masks made by the Manor Park volunteers were given to those fragile infants' parents, making it possible for them to visit their babies in the hospital.

At last count, 1,250 masks had been distributed and the Manor Park group has a new target of 1,500 masks. There is still plenty of need for non-medical cloth masks, so if you enjoy sewing and would like to join one of these groups, please contact **Cindy Mitchell** at cindymkurts@gmail.com to help the Food Bank or **Natasha Bendin** at natbendin@gmail.com to sew a mask for donation to people in need. All materials are donated by our community members and the group can help with patterns, instructions and finding supplies. *Iola Price*

Rockcliffe Park Public School Staff Stages a Neighbourhood Drive-by

From a recent email sent out by **Heather Mace**, RPPS principal: *"RPPS Staff miss our students! With the help of the Spirit, the Rockcliffe dragon, we are going to caravan through the neighbourhood honking our horns and waving. There will be signs on our cars. The caravan will leave the school at 1:30 pm and we'll follow a route together. Watch out your window or head outside on your balcony or front lawn to share a moment with us. To make sure we don't miss your street, use this form by Friday at 10 am to remind us of your address and we'll try to add it to our route!"*



The caravan was greeted with delight by the RPPS students and their families, making the day a little brighter for all involved. Thanks to **Kristen Healy** for sending photos from the event. Even non-RPPS families can appreciate this kind of spirit! It reminds us that we're all in this together, and we'll get through it – together.