



The Rockcliff News

November 2020

Rockcliff Park Residents Association

www.rockcliffepark.ca

BOARD OF DIRECTORS

Russell Gibson, *President*

rgg@gibsonslaw.com

Daniel Goldberg, *Vice President*

Daniel1973@me.com

Darrin Reesal, *Vice President*

dreesal@yahoo.com

John Butterfield, *Treasurer*

johnbutterfield@ymail.com

Michele Collum-Hayman,

Secretary, secretary@rockcliffepark.ca

Peter Lewis, *Past President*

plewis42@yahoo.com

Chris Barker

cb@rhodesbarker.com

Susan d'Aquino

spdott@gmail.com

Jean-Guy Dumoulin

jeanguy.dumoulin@gmail.com

Caroline Gingras

carogingras80@hotmail.com

Kay James

RPRANW@gmail.com

Louise Malhotra

louisemalhotra@gmail.com

Gouhar Shemdin

gshemdin@yahoo.ca

Susan Taylor

Susan.taylor@sympatico.ca

Mark Willcox

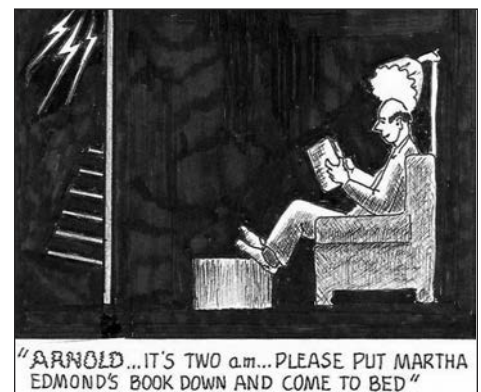
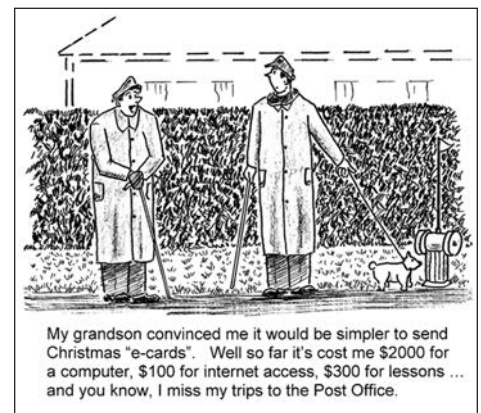
Willcoxm@rogers.com

Board meetings are held monthly and are open to all. See calendar for dates and times. Comments and suggestions are always welcome. Correspondence to Board members and any enquiries for administration purposes may be addressed by email to secretary@rockcliffepark.ca.

A Blast FROM THE Past

Rockcliff Park resident **Harold "Hal" Robert Steacy** (June 7, 1923 – April 7, 2012) was a Canadian mineralogist who was the curator of the Canadian National Mineral Collection at the Geological Survey of Canada in Ottawa. The mineral steacyite is named for him.

A cartoonist of some local renown, Hal drew monthly cartoons up to the end of his life for a variety of publications – including 'The Village Scene' for *The Rockcliff News*. A few of his many cartoons are reprinted here. Learn more about Hal Steacy at <https://www.legacy.com/obituaries/theglobeandmail/obituary.aspx?n=harold-robert-steacy-hal&pid=189957479&fhid=5973>.



PRESIDENT'S LETTER



This edition of the newsletter is the last in this format; the next issue will launch with redesigned graphics and expanded content. The updated newsletter, with thanks to Board members **Daniel Goldberg** and **Louise Malhotra**, will share more of the stylistic cues of the RPR website and permit us to share our newsletter format with the Rockcliffe Park Foundation. Recent changes to the newsletter to add a “Letters to the Editor” feature and establish an Editorial Board for submissions to our newsletter reflect the RPR’s desire to engage with you, the residents of our community. Please feel free to contact me or the Editorial Board with your comments or suggestions.

Our last Board meeting, held virtually, included a presentation by **Linda Dicaire**, Chair of the RPR Heritage Committee, highlighting a request from our Heritage Committee to consider adoption of ‘Dark Sky’ guidelines for our community. (For additional information on this movement, go to https://en.wikipedia.org/wiki/Dark-sky_movement.) At the October RPR Board meeting, lighting expert **George Sexton** made a presentation drawing to the Board’s attention important distinctions in terminology applicable to urban lighting design and expressing his views on the possibilities open to our community, as well as the limitations of urban lighting regulation. Please be sure to see Linda’s article on page 5 of this newsletter.

Some of you may have noticed temporary signs alerting residents and visitors to the fact that Rockcliffe Park is now a “40km/h zone” throughout the Village. This reduction in the speed limit from 50km/h, which would otherwise be applicable throughout the Village, necessitates changes in signage. One feature of this signage is its placement at the entrances to the Village, together with signs “cancelling” the restrictions as motorists leave the Village. Currently, **Kay James** (Board member and Chair of the RPR Traffic Committee) is looking into a reduction of the speed limit on Springfield Road adjacent to the schools, in collaboration with our Councillor, **Rawlson King**.

During the brief time that the City of Ottawa was last in Phase 3 of the province’s pandemic response, the Rockcliffe Park-Lindenlea soccer program was able to conduct soccer sessions for elementary school-aged children on the RPR-maintained field at the Rockcliffe Park Public School grounds, so thanks to RPR Vice President **Darrin Reesal** for leading our efforts to continue this activity. Regarding upcoming events, our hope is that the annual outdoor Christmas Tree Lighting will proceed, and in the new year our community will be safe enough for further pandemic restrictions to be eased. Please watch for our regular emails to RPR members publicizing our events, as well as the Rockcliffe Hosers’ winter outdoor activities.

We are aware of concerns about the continued closure of the Public Library in our community and for an update I direct readers to the submission from **Linda McDonald** on page 7 of this newsletter. **Caroline Gingras** is the RPR Board liaison with the Spring Book Sale and Library Committee.

As I write this letter, public meetings at the Community Centre are not possible due to COVID-19 restrictions, so our next Board meeting will again be conducted virtually, as we have been doing for the past six months. A logical next step for us would be to include RPR members. We are planning to conduct the Annual General Meeting (AGM) of our association, tentatively scheduled for February 17, 2021, as a virtual meeting of the membership. Details and a condensed Annual Report will follow in advance of the AGM, together with a request for membership renewals for 2021.

If you are not currently an RPR member, I encourage you to join us. Email **Kay James** at membership@rockcliffepark.ca for information on how to sign up, or simply visit www.rockcliffepark.ca and click on the “Membership and Renewals” button on the home page. Be well and stay safe.

Russell Gibson
October 13, 2020

THE ROCKCLIFFE NEWS • VOLUME 20 • NUMBER 6

The Rockcliffe News, the newsletter of the Rockcliffe Park Residents Association (RPR), is published six times each year. Submissions pertaining to the Village are welcome by mid month before publication. Please email editor.rockcliffenews@rockcliffepark.ca for information. Copy may be edited for clarity, length and content. Paid advertising is not accepted. Current and past issues are posted on the RPR website, www.rockcliffepark.ca.

FROM THE EDITOR

When my husband and I, with two teenagers in tow, moved to Ottawa from Vancouver in 2009, I must admit that I was less than thrilled. I gave up a wonderful job in advertising and a gorgeous view of the Pacific Ocean from our deck for unemployment and Ottawa winters.

However, Rockcliffe Park's charms quickly grew on me. And with free time on my hands, I was happy to volunteer to update the "Walking in Rockcliffe Park" booklet, working with the legendary **Diana Rowley**. Little did I realize that this project was just the beginning.

After having edited and produced countless issues of *The Rockcliffe News*, as well as annual reports, signage, website design, flyers and special events graphics, it's now time to move on. My husband, retired CBC News journalist **Terry Milewski**, and I recently sold our home in Rockcliffe Park and plan to stay mostly at our lovely lakeside cottage in Quebec. Terry is writing a book that will be published next year on the Sikh struggle for an independent state, and I am the volunteer editor of our lakes association's annual bilingual newsletter, which is probably not a surprise to anyone. That project is great fun, as I get to research and report on stories like the near-by Vietnamese Buddhist temple, runaway cows, yurt rentals and the local spiritual channeler.

It has been my pleasure and privilege to serve as Editor of *The Rockcliffe News* for the past nine years, and I look forward to keeping up with issues, events and activities in the Village through the website.

I would also like to add that a large part of the "attitude adjustment" I achieved regarding our cross-country relocation came through volunteering. By giving a bit of my time, I gained an appreciation for my new home, and made good friends in the process. I cannot stress enough that getting involved not only benefits the community, it brings personal growth and long lasting rewards.

Cynthia Hamady

*Talk to us! We welcome your letters and comments. Please send your submissions by mid month preceding publication to **editor.rockcliffenews@rockcliffepark.ca**. (Email the Editor for the current publishing schedule.) Photos or illustrations (with proper credit) may be included. Please also supply contact information. The current editorial policy, along with any additions or updates, may be found on our website, www.rockcliffepark.ca.*



OPINION

Please Slow Down!



Illustration: Seattle Times

The Village of Rockcliffe Park offers a unique quality of life with its narrow, tree-lined streets, abundant wildlife and tranquil setting. During the spring lockdown, many residents left their cars at home and poured into the streets by foot and by bike when everything shut down. This unexpected change gave many of us a chance to appreciate our surroundings more than ever. The sights and sounds of children playing outside without worrying about cars on the street was certainly one of the silver linings of the pandemic.

As restrictions lift and businesses slowly reopen, traffic in our neighbourhood is returning to pre-pandemic levels. Residents are starting to commute to work and school traffic is back. Unfortunately, the problem of speeding vehicles is also becoming noticeable once again. Over recent months, there have been many discussions about the heritage quality of our Village and the characteristics that make our neighbourhood so special. The privilege of walking our streets, many of us accompanied by children or pets, without the stress brought on by a speeding vehicle, springs to mind.

Some things to consider: Pedestrian fatality rates decrease by half when cars drive at 40km/h as opposed to 50km/h (www.who.int/gho/road_safety). Further reduction in speeds improve survival rates dramatically, which is why some Canadian cities are now considering a 30km/h limit on residential streets. Another added benefit of slowing down is the reduced noise and air pollution, both of which improve the quality of life for all of us here in the neighbourhood.

In the Village of Rockcliffe Park, you may have noticed the introduction of gateway signage at some of the entry points. This system designates the entire neighbourhood as a 40km/h speed limit zone. When driving along our streets, please stop and think to yourself – is it really necessary to accelerate hard and barrel down this narrow street at speeds of 50km/h or more, only to be forced to brake hard a few seconds later because of a yield or stop sign?

Mary Lapner



THE ROCKCLIFFE PARK FOUNDATION

Historical Plaque Project

We are pleased to announce that the second plaque in the historical plaques sesquicentennial project has been prepared and cast for installation at the Hillcrest entrance to the Caldwell-Carver Conservation Area.

The first historical plaque funded by the Rockcliffe Park Foundation has been located on the Village Green at the corner of Springfield Road and Mariposa Avenue since 2018 and the Foundation is continuing to fund this ongoing community project.

It is hoped that we can hold an official unveiling of the new plaque in the spring, dependent on outdoor gathering rules at that time.

The Annual Community Appeal: Your Support is Appreciated!

Every year the Rockcliffe Park Foundation Board members get together to send our neighbours a personal letter as part of our Annual Appeal. These letters are then, more often than not, hand-delivered. Given these unusual times, we are instead reaching out to you with an Annual Appeal insert in this newsletter.

Donations to the Foundation strengthen the Foundation's endowment, the interest of which is used to help fund projects and activities in our community. While some community activities will be curtailed this winter and spring due to the pandemic, much of what is supported is ongoing and helps keep Rockcliffe the beautiful and park-like community it is.


Please see the insert on how to donate.

Call for Nominations for The Rockcliffe Park Foundation Board

Interested in serving on the Rockcliffe Park Foundation's Board of Directors? The Foundation is a registered charity established in 1996 to support projects and activities to protect and enhance the beauty, character and vitality of the Rockcliffe Park community.

The role of the Rockcliffe Park Foundation Board is to set direction, manage the endowment fund, and make distributions of grants for projects and activities that support its mandate. The Board meets approximately eight times per year. Board governance, investment, financial, marketing and events management experience is appreciated but not necessary as the Board prefers to be diversified with people of many different interests to contribute to our community.

Individuals interested in seeking to serve on the Board are asked to contact **Ryan Kilger**, Chair of the Nominations Committee, at ryankilger@hotmail.com or 613 746-3541.



Mark Your Calendars!

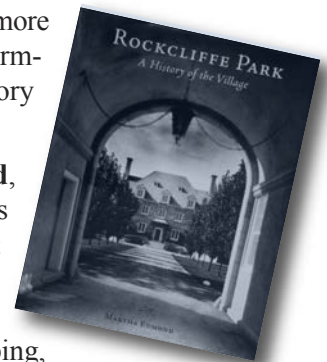
The Rockcliffe Park Foundation's **Annual Report to the Community** will be presented on Wednesday, February 17, 2021 at 7:00 pm – at the Community Hall if indoor gatherings are permitted or in an online format if not. More information will be forthcoming closer to the date.

Did You Know.....

...that the low-lying land which is now Juliana Road used to be swampland? In 1948 Council approved the Juliana subdivision plan and the area was drained. All the houses were built on piles to reinforce the soggy foundations.

This bit of information and so much more is contained in the beautiful and informative book of Rockcliffe Park's history by local resident **Martha Edmond**.

Available at **Books On Beechwood**, this book is full of historical photos and facts, and fascinating stories about our neighbourhood and neighbours past. It's a special and convenient purchase for COVID holiday shopping, with contact-free pick-up available.



The Foundation is a unique charitable organization established at the time of amalgamation with the City of Ottawa to manage an endowment, the interest from which is used to help fund community projects and program in three areas of focus: the conservation of the environment; preservation of the heritage character of the Village; and promotion of a sense of community for all residents.

THE 2020 ROCKCLIFFE PARK FOUNDATION BOARD: *Executive:* Sarah Baxter, Chair

Ryan Kilger, Vice-Chair | Roy Williams, Treasurer | Jane Newcombe, Secretary *Board Members:* Anthony Carty, Alexandra Colt, Alison Green, Heather Hickling, Fiona Murray, Jane Panet, Bonnie Robinson, Paul St. Louis, Donna Taucer

HERITAGE MATTERS

The Night Sky of Rockcliffe Park: Our Common Wealth



Background

The Rockcliffe Lawn Tennis Club (RLTC) received a permit from the City of Ottawa to light tennis courts on May 3, 2018. The permit expired on May 4, 2020. The RPR Heritage Committee (RPR HC) was not consulted prior to the issuance of the permit, which was granted by Delegated Authority under the provisions of the 1997 Village of Rockcliffe Park Heritage Conservation District guidelines. Had it been consulted in 2018, the RPR HC would not have supported a proposal for six high mast poles, 30 feet high, fitted with 24 LED fixtures 200W, 120V.

On May 2 and May 6, 2020, the President of the RLTC kindly indicated:

“We respect and value our neighbours and are committed to engaging in healthy, positive conversations. To reassure our neighbours, the [RLTC] Board has decided to hold off on further project development until there has been ample discussion...” [and] “The Club is more than happy to continue engagement with the community, neighbours and membership on this issue.”

Opportunity

At this time, are there opportunities presented by Rockcliffe Park’s characteristic low ambient lighting, and by the network of areas in and around the Rockcliffe Lawn Tennis Club (unlit for nearly 100 years) that enjoy, overall, the absence of lighting: the Caldwell-Carver Conservation Area including McKay Lake (unlit since time immemorial), and the NCC Hillsdale Park. These are reinforced by their proximity to other areas that are not lit: the NCC Mile Circle, the Ottawa River – a Canadian Heritage River – and the Beechwood Cemetery.

Given these many areas, could Rockcliffe Park evolve, like other communities around the world, for there are several, from low ambient light to ‘Dark Sky’? Or be exemplary?

According to *Wikipedia*, the Dark Sky movement is a campaign to reduce light pollution. The advantages of reducing light pollution include an increased number of stars visible at night, reducing the effects of electric lighting on the environment, improving the well-being, health and safety of both people and wildlife, and cutting down on energy usage.

This raises questions. How dark is a ‘Dark Sky community’? What does this mean? What is achieved? How is this managed? For what period of time? Would it be safe? Would Dark Sky magnify the environmental, heritage and aesthetic character of our special neighbourhood, which contributes to our common wealth?

Could we start with eliminating ‘light trespass’ (light that ‘spills’ into the sky or into adjacent areas)? Rockcliffe Park is a Heritage Conservation District (HCD). The stewardship of the heritage character of Rockcliffe Park and of the Village’s beautiful natural environment are shared responsibilities incumbent upon everyone. The significant amenities of the Caldwell-Carver Conservation Area, McKay Lake and the Pond are ‘attributes’ of Rockcliffe Park that enjoy an absence of lighting. The preservation of the natural landscape is integral to the cultural landscape. They go together.

With regard to the RLTC, the RPR Heritage Committee asked the RPR to consider the following at its June 2020 meeting: (i) ask the RLTC to continue its 97-year history of not lighting the tennis courts; (ii) continue its decades of advocacy for protecting the character of Rockcliffe Park, to champion low ambient light in Rockcliffe Park and the absence of lighting in all existing areas in Rockcliffe Park, and in close proximity to it that do not have lighting; (iii) consider exploring the concept of ‘Dark Sky.’ In this exploration, could the RPR invite its Heritage and Environment Committees, the community at large, and the RLTC to start a conversation together about ‘Dark Sky’ and absence of ‘light trespass’? This dialogue could be transformative.

The idea of ‘Dark Sky’ is consistent with the times and with messages from youth around the world. Youth has, after all, applauded **Greta Thunberg**’s global message to stop the disruption, such as light pollution, to the delicate balance of our environment.

Rockcliffe Park Heritage Committee: Linda Dicaire Chair, Michele Collum Hayman, John Cook, Marianne Feaver, Daniel Goldberg, Bea Hampson, Michael Kelen, David McRobie Illustration: Skyglow Project

HERITAGE MATTERS

Setbacks for Accessory Buildings

Two years ago, the RPRA requested that the City change its zoning by-law to reinstate the long-established setback of five feet – 1.5 metres – for accessory buildings in Rockcliffe Park. This setback helps to protect the parklike heritage character of our community. We are pleased that City Council approved this change on October 14.

Accessory buildings are anything from small sheds to detached garages in backyards. Upon Rockcliffe Park's amalgamation with the City of Ottawa in 2001, it was agreed that all the zoning by-laws in Rockcliffe Park would be carried forward, and this was done. However, in 2008 when the City was standardizing some by-laws, it changed the setbacks for accessory buildings to two feet from five feet. The error came to light some time later. The new by-law applies going forward. It is not retroactive.

We have **Michael Kelen** – a long-time resident and member of the Rockcliffe Park Heritage Committee – to thank for investigating this matter and seeing it through. He was able to rely on a very helpful affidavit from **James (Si) Taylor**, who was a Village Councillor at the time of amalgamation and oversaw the transfer of Rockcliffe's zoning by-laws to the City. Notice of this proposed change was given in the Rockcliffe Newsletter of December 2018.

Rockcliffe Roads and Recent Road Works on Acacia at Coltrin

One of the many features of Rockcliffe Park that contributes to its park-like heritage character is its narrow winding roads without curbs or sidewalks. They slow down traffic and make our neighbourhood a great place to walk. Our historic street patterns and road widths are protected by our Heritage Plan.

Nonetheless, when the City was doing extensive sewer work four years ago, they widened many roads, claiming

erroneously that they were obligated to widen all roads to a provincial standard of six metres. The RPRA engaged an expert who proved that there is no such standard for residential streets, and there was no reason to alter Rockcliffe roads. However, by that time, the damage was done.

In light of this experience, I inquired about the roadworks on Acacia Avenue at Coltrin Road.

Good news! The National Capital Commission (NCC) is digging up the roads to connect the historic boathouse that they are rehabilitating on the Ottawa River to the City's water and sewer mains. This work will provide fresh water and updated sanitary services. I have informed the folks at the NCC of the need to reinstate existing road widths when their work is finished and they have assured me they will do so.

They are doing an impressive job on the boathouse – if you want to have a look, go to <https://ncc-Can.gc.ca/projects/national-capital-river-pavilion>. And here is a picture.



*Susan d'Aquino
Chair, Rockcliffe Park Heritage Outreach Committee*



Heritage Ottawa

Undeterred by the pandemic, Heritage Ottawa conducted 'social-distancing walking tours' during the summer-fall season, including a new French-language tour of Beechwood Avenue.

However, their popular in-person lecture series has been cancelled for the rest of 2020. To help stay engaged during these challenging times, they have put together a selection of virtual tours and excellent lectures and films you can enjoy while staying at home. For details, go to <https://heritageottawa.org/lectures-films>.

Information on the proposed addition to Château Laurier is also posted on the website; go to <https://heritageottawa.org/>.

SPRING BOOK SALE



In the Time of COVID-19: Our Library and Spring Book Sale

We have all been wondering when our Library will open. Ottawa Public Library (OPL) has confirmed that a number of Branches have not re-opened since the lockdown. The pandemic has placed significant pressure on OPL operations and on its workforce. “Staffing issues have made the reopening of our Branch – and other locations – not possible at this time,” said **Philip Robert**, OPL Manager (St. Laurent, Rideau, Rockcliffe and Vanier Branches). He added that the OPL “is planning for the reopening of Rockcliffe Park Branch in 2021.”

The April 2019 Spring Book Sale was our most successful Sale ever, thanks to the hard work of volunteers, our community (as book donors and Sale patrons) and our sponsors (**Chartwell New Edinburgh Retirement Residence, New Edinburgh Pharmacy and Dymon Storage**).

Our funds promote literacy and the love of books – mostly focussed on children. In 2019/2020, we enhanced various aspects of Branch collections, including expanding the Express program. Library staff reintroduced two innovative programs: outreach to seniors’ residences, including a reading program for seniors with dementia and intergenerational storytelling; and Music in the Stacks – a series of evenings where local musicians entertained Library clients. PD Days and the October Open House attract many children to the Library with live music, stories and crafts. Bringing children into the Library remains a focus and thanks to the very active and professional Branch staff, our Library was full of delighted clients until mid-March, when COVID-19 forced its closure.

What’s Next?

The April 2020 Spring Book Sale was cancelled because of COVID-19. We planned for a smaller Sale in September 2021; preparations would have to commence early in 2021, which is an impossibility. We are now planning our next Sale for April 2022. We are considering how we might receive some book donations in the coming months, as so many residents have been clearing out shelves. If we are successful in figuring out how to do that, we will advise as soon as possible. Of course, we will need to follow Public Health guidelines and ensure the City is on board.

Linda McDonald, Chair, RPR Library Committee

ENVIRONMENT

It was a busy summer in the Caldwell-Carver Conservation Area – on the trails, in the woodlot and at The Pond.

As many of you will recall, there was an attempt to construct a dock for access to McKay Lake in the Caldwell-Carver Conservation Area in the summer. Logs that acted as trail-edge markers were used to form a structure running from the shoreline, through the cattail marsh to open water. Thanks to a hard-working crew from the Vanier City works yard (Parks and Recreation staff), the logs were removed from the water and marsh edge and stacked behind one of the memorial benches. On August 18, answering the call for help, 18 people from Rockcliffe Park, Manor Park, Lindenlea, New Edinburgh and the Market came out to put the logs back where they belonged. The husky log carriers ranged in age from 11 to a few in their seventies. With so many enthusiasts, the group was able to complete the work in less than an hour.

The dreadful heat, shuttered recreation facilities and the general lockdown enormously increased the pressure on the Pond, and late-night parties were a problem. To assure ourselves that the high number of swimmers did not harm the water quality, we sampled the water four times this summer and added *E. coli* to the assay parameters. At no time did the levels exceed, or even come close, to the provincial level of unacceptability for swimming. A full report will appear in the RPR Annual Report.

In the woodlot and along the trails, the invasive plant removal crew worked to pull out garlic mustard, dog-strangling vine and, most of all, buckthorn! At time of writing, we have logged just over 160 hours of invasive plant removal and if the warm weather holds, we will perhaps exceed 175. We appreciate the friendly conversations we have had with walkers and the opportunities to explain why buckthorn is a problem and how we remove it. We may call for volunteers later this fall to help us bundle and carry the buckthorn to the road edge for removal by the City waste management crews. *Iola Price*



Russ Gibson and Jurgen Hoth, hard at work.

COMMUNITY AND COMMUNICATIONS

Most residents would agree that there is an especially strong sense of common purpose and community in the Village of Rockcliffe Park. Thanks to the stewardship of successive generations of residents, the ‘park-like setting’ conceived by **Thomas Keefer** is still very evident. Current and former residents have made the accommodations necessary to preserve the area’s heritage and history, both with respect to their individual properties – dimensions and placement on the lot, natural landscaping and preservation of historical elements – and to the Village itself, its streetscapes and topography. The community has forgone sidewalks, road widening and straightening, bright lighting and commercial development.

Along with the preservation of heritage, the cumulative effect of these decisions gives rise to another feature very valuable to those who live here: a common philosophy about what is valuable and worth preserving. Residents feel confident that they know what to expect from their community, and comfortable that a sudden change that would interfere with their quiet enjoyment of their home is very unlikely. That’s why people are so strongly affected when they find they’ve been kept in the dark about something which negatively impacts the Village and their own property. It’s not only the proposed change, but the realization that decisions affecting their home have been taken without their knowledge or involvement. This lack of timely communication sets neighbour against neighbour and damages our community. To avoid division, we need to work hard to encourage openness.

The community has several channels of communication. Rockcliffe Park Residents Association (RPRA) Board meetings are open to the public, and the minutes are published on the RPRA website, www.rockcliffepark.ca – a site that is updated frequently. RPRA members receive bulletins by email on news and events in the Village. *The Rockcliffe News*, published six times a year, is distributed free to every household, and now accepts letters to the Editor (*see page 3 of this newsletter for submission information*). And yet... Newcomers to the Village may find out only after purchasing a property that changes they’ve planned, in order to make their new home better suited to their family, may be contingent on approval from the City of Ottawa Planning Committee’s Built Heritage Sub-committee.

Many residents only recently learned about the RLTC’s proposal for lighting the courts and that, without any public discussion, plans were already well advanced – lights purchased, permits applied for. Certainly the RLTC is a long-standing and valued part of RP’s history, and an important

amenity for the community. But news of the lighting proposal came as an unwelcome surprise to many Village residents. It appears that the plans had been discussed internally for several years, but not shared with neighbours or the community at large. Even now, people still have questions:

- How was it possible for a proposal with such significant impact on the community to go forward without input from affected neighbours, the community at large, the RPRA, or the City’s Built Heritage Sub-committee?
- Why is it considered vital for the tennis club to grow? Wasn’t it traditionally a facility for residents? Why is it appropriate for non-residents to be members?
- Just what would 25,000 lumens of bright blue/white light on six 30-foot poles actually look like from ground level on neighbouring streets and properties? How far away would it be visible? Comparison with the lighting at the hockey rink is unhelpful because this situation is quite different; the tennis club proposal is for more, and more powerful, lights. At the rink there are only four houses within 100 metres or so, none of them closer than 60m; at the tennis club there are a dozen houses within that distance of the proposed lights, seven of them less than 50m away and four of them closer than 40m. The spillover lighting would be substantial – the claim that only two tennis courts would be illuminated is disingenuous.

Unwelcome discoveries like these cause distress and anxiety. They are also eminently avoidable. We need to improve communications within the community, to guard against people being taken unawares in this way. We could, and should:

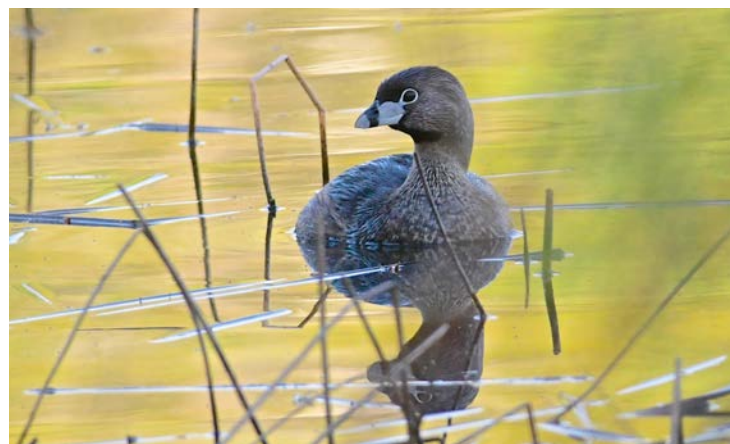
1. Find a way to ensure that people considering buying property in the Village are aware of the responsibilities that come with owning a property in a Heritage Conservation District, and understand that alterations and updates that would not be an issue in other areas of the City may not be possible here.
2. Ask the City to notify RPRA if a heritage permit decision is about to be delegated to a staff person, rather than decided by the Built Heritage Sub-committee.
3. We need to encourage individuals and groups within the community to be open and upfront about plans that may impact others, especially if they could meet with opposition, so that all points of view can be heard. Any other course of action will inevitably engender a hostile reaction. If you become aware of something others should know about, a note to secretary@rockcliffepark.ca is enough to bring it to the community’s attention. *Kay James*



WILDLIFE NOTES

A Great-crested Flycatcher, our largest flycatcher, sang out a loud “wheep” in our garden on June 4; first announcement of its return from the south. For **Iola** and me, that call is a marker each year that summer is truly here. Our common small flycatcher, the Phoebe, returns earlier, and this year, as usual, a pair raised young under the bridge over the outlet of McKay Lake.

One Chickadee pair raised a brood of young in a nest box next door to us beside the **Mierins’** pool. Another pair raised young in a nest box facing our front door, and, as I watched them in the evening of June 4, a White-tailed Deer strolled through the



lawn within 30m of me on its way down the extension of Fairview to the ‘Dogwalk’ below. Two Robin broods fledged from ledges under our carport roof. **Susan d’Aquino** noticed a Pied-billed Grebe with a partly-grown young off her dock on McKay Lake – evidence of breeding of this species on the lake. The photo shown at left was taken by **David Keys** of Manor Park on May 23; the bird was in the southeast corner of the lake.

A Stoat slipped through our garden in the morning of August 3. This small, slim, member of the weasel family, about a foot long including tail, is brown-backed with white underparts and a dark tail tip. I don’t recall seeing one in Rockcliffe before.

On October 1, White-throated Sparrows searched for seeds and perhaps insects where the Stoat had been. They are regular fall visitors to our garden, searching the ground with their characteristic backward hop-scratch to uncover food.

For the second summer we saw no Chimney Swifts circling high above our garden to catch insects that had hatched and flown up from McKay Lake.

Anthony Keith, 22 October 2020

Photo by David Keys; used here courtesy of The Manor Park Chronicle.

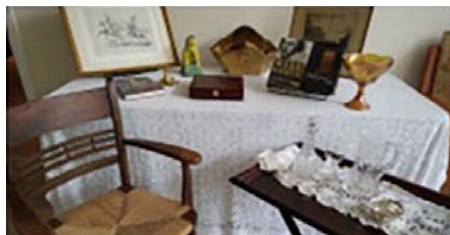
The St Bartholomew’s VIRTUAL Church Bazaar, November 12 – 14

This year the Annual St Bartholomew’s Church Bazaar will be online and virtual for the first time! All proceeds will support Church Outreach and our refugee fund. The following link will take you to the sale site, which will be “live” on November 12: <https://www.stbartsottawa.ca/bazaar.html>.

You’ll find information and a preview on this page, and closer to the opening you may browse through over 75 photographs of “vignettes” by subject of fine things to purchase for gift-giving – and perhaps for yourself as well!

Items, for example, will include “Angels around Town” (handmade angels suitable for Christmas, Christenings, Confirmation and other events, and as table decorations as well as for the tree); “Breakfast,” which includes an assortment of St Bart’s preserves, a handmade brass tea pot from Nairobi and a cookbook; “The Gentleman’s Study,” which includes many great features such as a sherry decanter, history books, a restored antique chair, etc. See the photos below.

Payment may be made by e-transfer, and contact-free delivery will be arranged at the time. Should you have any questions, you may contact the co-conveners: **Linda Assad-Butcher** at lassadbutcher@gmail.com or 613 748-6060, and **Liz Heatherington** at elizmaryh@gmail.com or 613 745-4677.



MESSAGES FROM OUR POLITICIANS

Messages from our politicians – **Jim Watson**, Mayor, City of Ottawa; **Mona Fortier**, Member of Parliament for Ottawa-Vanier; **Rawlson King**, Councillor, Rideau-Rockcliffe Ward; and **Lucille Collard**, MPP, Ottawa-Vanier – are featured in full on our website, www.rockcliffepark.ca, as we receive them. A full or abridged version, space permitting, of Mr. King’s column will continue to appear in the newsletter.

Mayor Watson’s column highlights the newly-created Veterans Task Force, supporting our veterans and their families in our community. MPP Lucille Collard talks about Ottawa’s response to the pandemic, and how to help support our local businesses. Mona Fortier’s office did not submit a column this month, but you may find information on her website, <https://monafortier.libparl.ca/?lang=en>, and be sure to read her update on the status of the interprovincial bridge crossing at [https://mailchi.mp/135e576b9b10/infolettre-de-mona-fortier-newsletter-9540242?e=\[UNIQID\]](https://mailchi.mp/135e576b9b10/infolettre-de-mona-fortier-newsletter-9540242?e=[UNIQID]).



*From the desk of Rawlson King
Councillor, Rideau-Rockcliffe Ward*

Rockcliffe Park Updates

I hope everyone is enjoying the fall colours, and staying safe and healthy as we enter the eighth month of this pandemic in Ottawa.

Residents might have noticed the installation of gateway signage on Ward 13 streets, as part of my ongoing commitment to lower residential speeds throughout the Ward by the end of this term of Council. These signs will harmonize all the speed limits on residential streets to 40km/h, providing consistency for drivers and improved safety for more vulnerable road users. Collector roads, such as Crichton Street and Springfield Road, will remain at the default 50km/h speed limit.

Concerning the tree removal at McKay Lake: A number of dead or hazardous trees on the main path in the Caldwell-Carver Conservation Area have been marked with red Xs. That means they will be removed some time in the fall or winter. Access to the main path will be limited during the removal operation. The plan is to cut the trees down and leave them lying in the bush to decay and produce soil on which future trees will grow.

Finally, if you don’t normally get a flu shot, get one this year. OPH has received our vaccines and is in the midst of shipping them to providers including hospitals, long-term care homes and community immunization providers. Pharmacies access vaccine directly from the province and are starting to receive them this week.

As always, you may contact my office at **rideaurockcliffeward@ottawa.ca** or at **613 580-2483** with any concerns or questions.



English Language Tutoring for the Ottawa Community (ELTOC) Thanks Our Donors

English Language Tutoring for the Ottawa Community (ELTOC) would like to thank our donors for their ongoing generosity, which will help us to continue to provide English language tutoring for more than 200 newcomers annually, who are unable to access regular ESL classes.

With the move to remote learning in response to COVID-19, these much-needed funds continue to support the new costs for online training, educational materials and technical needs for our volunteer tutors and learners. All donations to assist our programmes are greatly appreciated and will also help to achieve ELTOC’s vision for a strong, inclusive multicultural community, despite the pandemic, as well as lessen the impact of the increased isolation many of our newcomers are facing.

Should you wish to make a donation, you will receive a tax receipt for all gifts over \$20, and have the happiness of helping Ottawa be an inclusive community to newcomers. Please see our website – <https://eltoc.ca/> – to read about our latest news or make a donation. *Elizabeth Heatherington*

SCHOOL REPORTS

Please Note: In this issue, we are featuring upcoming events at Ashbury and Elmwood Schools, with other school news and reports posted on our website, www.rockcliffepark.ca.



Virtual Open House October 27, 28 and 29

After a very successful start to the 2020 - 21 academic year, we are now turning our attention to 2021 - 22! We will host a series of Open Houses – October 27, 28 and 29 – for families interested in learning more about what Elmwood can offer. Attendees will learn more about our innovative approach, talk with leaders at our school, and better understand what makes Elmwood the school of choice for families looking for an exceptional educational experience for their daughters.

Register now at elmwood.ca/open.

Virtual Holiday Sale & Auction



Looking for a unique holiday gift? Check out Elmwood's Virtual Holiday Sale & Auction, where you'll find beautiful works of art by local artists, items for your home and garden, beauty and health services, and much more. This online sale and auction starts November 26 and runs to December 11. Visit www.elmwood.ca for details.

ASHBURY COLLEGE



Application Deadline December 4

Interested in Ashbury for the 2021 - 22 school year? Applications for students entering Grades 4 -12 close December 4. More information and the application form can be found at ashbury.ca/admission.

LOCAL INTEREST

Lineage Arts in New Edinburgh Supports Indigenous and Visible Minority Artists

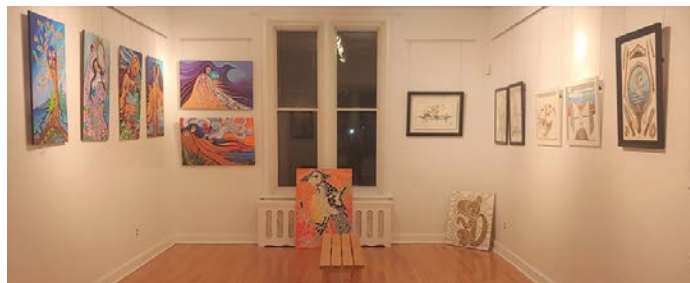


Photo: Dhanya Shastri

Lineage Arts, in the New Edinburgh Community and Arts Centre (NECTAR) at 255 MacKay Street, is a gallery that brings Indigenous and visible-minority artists to the forefront of arts and culture spaces.

Heritage, culture, and life experience form the backbone of our work. **Suny Jacob**, the owner of Lineage Arts, started her career supporting Inuit women fleeing domestic violence. Through this work she saw the exceptional artistic talent that survivors relied on to cope with the trauma of abuse. Inspired, she left social work to create Lineage Arts, an art space that supported these survivors through artistic practice. Ms. Jacob provided low-income artists with art materials and a safe workspace in which to create, covering most of these expenses out of pocket. Her project grew.

Lineage Arts has evolved into an innovative art space that now showcases contemporary and traditional art from Canadian and international Indigenous and visible-minority artists. The gallery serves as a cultural meeting place that encourages creative collaboration and exchange between the public and Indigenous and visible-minority artists from across Canada and the world.

Our belief is that art is an experience. We collaborate with Indigenous Elders and Knowledge Keepers to create holistic learning experiences for the public. Lineage Arts is focused on catalyzing the role of art within the community through public learning and a participatory approach to art and design. We invite you to participate in our workshops, browse our collection, meet the brilliant artists we support and perhaps expand the diversity of your own art collections – as soon as pandemic restrictions allow us to reopen.

Check out our website, www.lineagearts.ca. Follow us on Facebook and Instagram to get a schedule of our online programs. Questions? Email us at sjacob@lineagearts.ca.

END NOTES



Winter is Here so Roll that Rock!

It's that time again – the snowplows are out so move those rocks back from the pavement edge. The same is true for the iron and plastic road edge markers – the snowplow operators need a place to deposit the snow and our rocks and iron stakes cause damage to their snowplow blades.

If you install T-bars or markers to guide snowplow operations, they should be placed 12 inches (30 cm) from the edge of the pavement. Please ensure they are not so deep as to puncture a gas line. Contact Ontario One Call at **1-800-400-2255** or online at on1call.com for a free underground utilities locate.

Winter Traffic in the 'Hood: Slow Down and Take Care!

With the advent of winter weather and the move to Daylight Saving Time, neighbourhood roads have become especially treacherous. Drivers: Please slow things down and share the road! Pedestrians: The Ontario Highway Traffic Act requires pedestrians to walk facing traffic.

While it is up to drivers not to run over pedestrians, kids walking home from school are still out at dusk these days and they would be more likely to be able to leap out of harm's way if they walked facing traffic. And, if possible, wear light-coloured clothing, carry a flashlight and/or clothing with reflective tape in the winter traffic. Parents: Advise your kids about winter safety. In fact, everyone could use a reminder and refresher. Be aware, take care and be safe!

Winter DIY

To keep your street in order during ice and snow season, please shovel the snow off street drains. When we get those winter thaws, the water needs to be able to get to the drain and if it is blocked, the street may flood.

A bit of old-fashioned DIY preventive maintenance is better than waiting several days for the City to come and chip away the ice and snow. You can report blocked drains to the City via **311** but be prepared to wait for an operator and then describe the blocked drain location, giving a street name and nearby house number.



Local COVID-19 Testing Sites

Ottawa has recently been seeing a rise in cases of COVID-19. If you feel that you need to be tested, you can go to one of the COVID-19 clinics or the COVID-19 Assessment Centres. For information, visit the **Ottawa Public Health** website at https://www.ottawapublichealth.ca/en/public-health-topics/novel-coronavirus.aspx?utm_source=OPH&utm_medium=Home_Page_Banner&utm_campaign=Coronavirus&utm_content=Home_Page_Banner_OPH.

If you are in distress (e.g., severe difficulty breathing, chest pain, fainting, or significant worsening of a chronic condition), go to the nearest hospital emergency department.

The centres closest to Rockcliffe Park are listed below.

AKAUSIVIK INUIT FAMILY HEALTH TEAM **24 Selkirk Street, Vanier | 613 740-0999**

Hours: Monday through Friday 9:30 am to 5:00 pm;
Closed weekends

Testing: All ages | Appointment: Not required

Referral: Not required (please verify info before going)

COVID-19 DRIVE-THRU ASSESSMENT CENTRE **Ottawa Stadium (RCGT Park)** **300 Coventry Road | 613 737-8193**

Drive-thru testing **ONLY** with a valid Ontario Health Insurance Plan (OHIP) card. *Note:* You must have a vehicle to attend your appointment. A maximum of four people per vehicle can be tested.

Hours: Seven days a week, 10:00 am to 6:00 pm

Testing: Ages 14+ years old | Appointment: Required

Call or book online on Ottawa Public Health's website.

To cancel your appointment, please email DTTI@toh.ca.

One Last Reminder... Flu Season is Here. Getting your annual flu vaccine is an important way to help protect yourself, your family and vulnerable people in your community. For more information and to find out where to get your vaccine, go to www.ottawapublichealth.ca/en/public-health-topics/influenza-flu.aspx.