

The ROCKCLIFFE NEWS



Rockcliffe Park Residents Association

September 2021

Rockcliffe Park wins City Support For National Recognition

Page 8

Wrap Up: Caterpillars and Moth Outbreak 2021

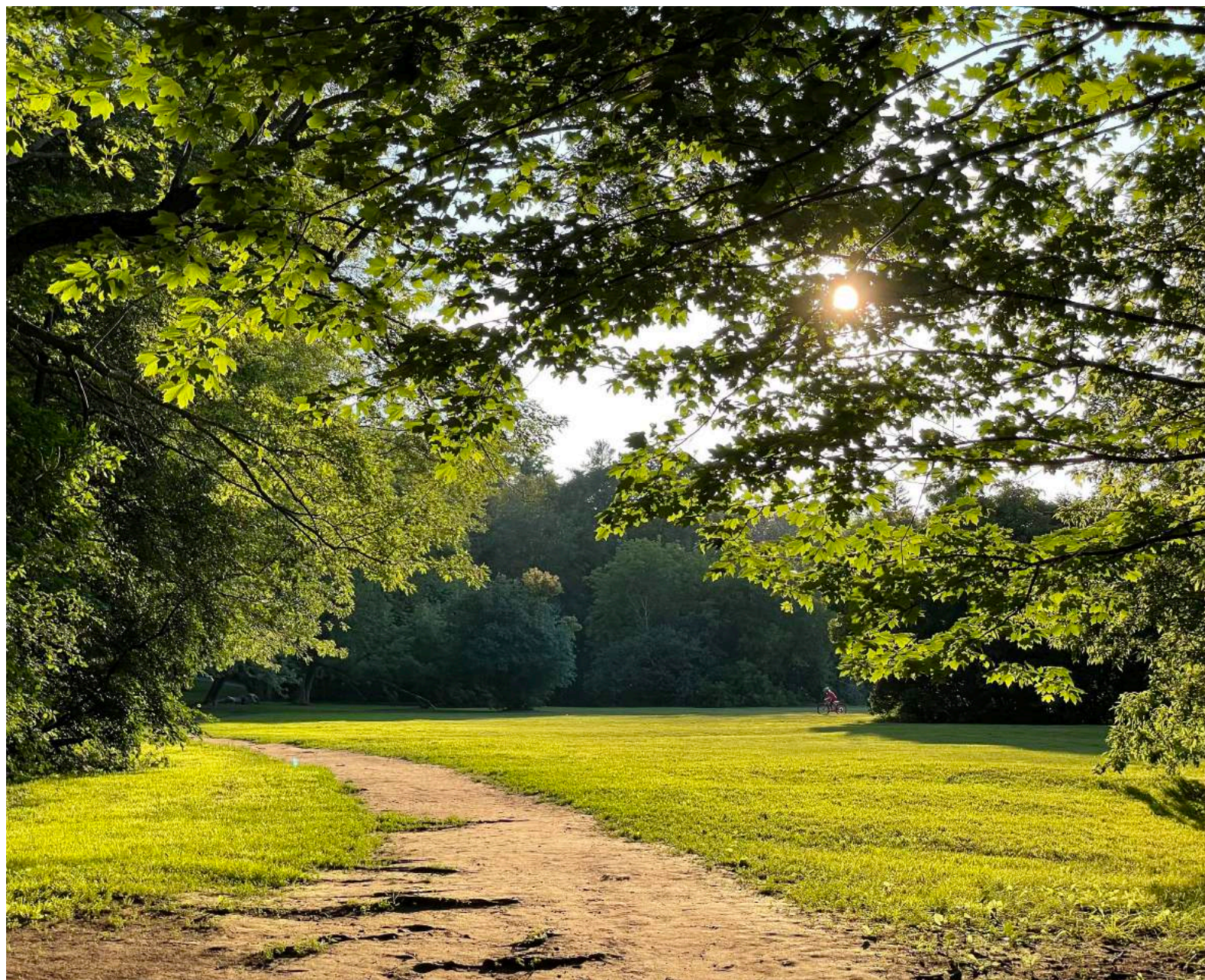
An Update and what to do next.

Page 14

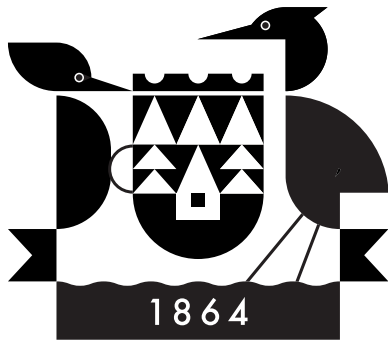
Where in Rockcliffe?

Can you guess the door?

Page 21



ROCKCLIFFE PARK RESIDENTS ASSOCIATION



The Rockcliffe Park Residents Association (RPR) is a community-based membership organisation run by volunteers.

Our mission is to foster a spirit of community within the Village, to preserve and enhance its unique natural environment and its special heritage character, and to represent the interests of Rockcliffe residents.

The volunteer board of directors meets on the third Wednesday evening of the month (except July, August and December). Meetings are open to the public.

Correspondence to Board members and any enquiries for administration purposes may be addressed by email to:
secretary@rockcliffepark.ca.

www.rockcliffepark.ca

Board Members

Russell Gibson (President), Daniel Goldberg (Vice President), John Butterfield (Treasurer), Michele Hayman (Secretary to the Board), Peter Lewis (Past President), Chris Barker, Susan d'Aquino, Kay James, Louise Malhotra, Gouhar Shemdin, Mark Willcox, Jeff Bell, Patrick Blonar, Matthew Henderson, Elizabeth Cogan, Linda English, Beatrice Hampson, Linda Dicaire

Membership Secretary and Database coordinator

Lisa Cogan

Membership Drive

Vacant

Communications Committee and Newsletter Editorial Board

Daniel Goldberg, Louise Malhotra, Michele Collum Hayman, Russ Gibson, Sarah Baxter

Website Patrick Blonar Email blast Kay James A-frame signs vacant

Federation of Community Association - Regional Liaison Committee

Bea Hampson

Community Hall Maintenance/key agreement/insurance

Russ Gibson, Michele Hayman

Social, sports and Recreation Welcome Committee

Social Committee

Lisa Cogan, Russell Gibson

Christmas Party /Christmas Tree Lighting

Peter Lewis, Michele Hayman

Fundraiser

Peter Lewis, Nicolas Temnikov, Jeff Bell

Speakers Program

Susan d'Aquino, Marilyn Venner

Library Book Sale

Linda MacDonald (Chair), Bea Hampson, Jane Newcombe

Soccer Field Maintenance / RPL Soccer Program Coordination / Village Green, Jubilee Gardens

Matthew Henderson, Peter Lewis, Mark Willcox, Russell Gibson

Rockcliffe Park "Hoser" Corp. Liaison

Louise Malhotra

Outdoor Films

Chris Barker, Russell Gibson

Trash Bash /BBQ, Village clean-up Vacant

RRCRC Fundraiser

Nicolas Temnikov, Jeff Bell

Environment Committee

Iola Price (Chair, Invasive species removal Liaison with City)

Marilyn Venner, Andrew Henderson

Pond Sub-Committee (of Environment):

Nicolas Fortier, Marilyn Blattell, Cali Thomson, Jane Newcombe, Kate Dickson, Nicolas Temnikov, Mark Willcox, Patrick Blonar

Heritage Committee

Linda Dicaire (Chair), Michelle Collum-Hayman, Daniel Goldberg, John Cook, Michael Kelen, Marianne Feaver, Bea Hampson, Sarah Richardson

Heritage Events Committee

Kay James (Chair) Patrick Blonar

Heritage Outreach Committee

Susan d'Aquino (Chair), Gouhar Shemdin

Working group re: Centennial Gardens Circle

Jane Panet (Chair), Matthew Henderson

Traffic Committee

Kay James

Newsletter Layout Coordinator / Graphic Design / Illustrations

Daniel Goldberg, Amanda Shore
(Amanda Shore Studio)

PRESIDENT'S LETTER



by Russell Gibson

The City's new Official Plan is now available in draft form for viewing by residents. It will be formally reviewed by a committee of Council on October 14th. We are currently awaiting a final draft of the Rockcliffe Park Secondary Plan to share with you.

You may recall that the proposed Official Plan for the City of Ottawa, together with the Rockcliffe Park Secondary Plan, is expected to be adopted by Ottawa City Council later this year. The Rockcliffe Park Secondary Plan will provide more detailed plans than those contained in the Official Plan and we are told from recent meetings with senior City Officials that it will include explicit reference to the Rockcliffe Park Heritage Conservation District Plan. Further we have been advised that by senior City officials that their intent is that Official Plan will be interpreted so Rockcliffe Park is excluded from the City's density targets of 80 units per hectare. We wish to thank Stephen Willis, General Manager of Planning, Infrastructure and Economic Development and his colleague Don Herweyer for our last meeting with the Planning working group of the RPRA board, comprised of Daniel Goldberg, Peter Lewis, Susan d'Aquino, and myself, back in June. Our hope is that the new proposed secondary plan for Rockcliffe Park will align with the Rockcliffe Park Heritage District Plan.

We recently received word and have published on our webpage the motion of support from the City of Ottawa for the naming of the "Village" of Rockcliffe Park as an Historic District of National Significance – I refer you to the article include in this newsletter with more details. Although this designation has no legal significance, it is a rare and special honour. Special thanks to Martha Edmonds for putting together the proposal that was submitted to the Historic Sites and Monuments Board of Canada.

At the time of writing, Ottawa remains in Stage III of the Provincial Pandemic Plan which has greatly impacted RPRA programming. Notwithstanding the modified restrictions applicable to our programming, the Rockcliffe Hosers' Pedal Heads outdoor summer camp proceeded at the Fieldhouse (see a report in this newsletter on it).

Accordingly, RPRA Board meetings will continue for the foreseeable future via virtual means and all residents are invited to attend them. The Zoom link is shared with members approximately one week before our meetings, together with the agenda for the meeting. Minutes of our meetings, together with our agendas and Zoom Link can be found on our web-site for those who may be interested in viewing them. If you are not already a member of our community association, I encourage you to join the RPRA to receive notice of our board meetings and of other events (our event calendar and details for joining as a member are available at www.rockcliffepark.ca) and in the centre-fold of this newsletter.

I anticipate that at our next Board meeting we will complete our discussions regarding the mandate of the RPRA Heritage Committee. Your views are important and we hope that you will consider attending our meeting virtually to share with us your views on our Heritage Plan, Heritage Committee and the current Rockcliffe Park Secondary Plan. At our last Board meeting in June prior to the summer break, a number of residents and directors participated in an open discussion of our hopes, expectations and aspirations for heritage issues in our community. In a future newsletter, I will report further on these meetings.

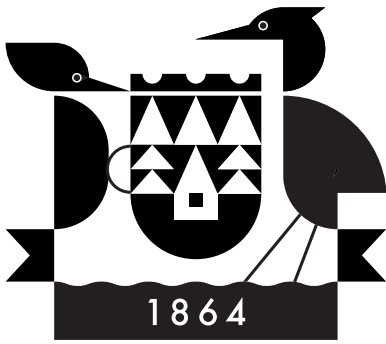
The Heritage Committee continues to search for new community member volunteers so if you are interested in volunteering on

this committee, or one of the RPRA's other committees, contact me, or the secretary to the Board of Directors, Michele Collum Hayman.

Finally, I would like to thank Susan Taylor who recently left the board of directors. Susan volunteered many hours of her time to our association in the role of director and helped the RPRA establish an updated welcome package for new residents in our community. If you have a suggestion for an activity or program for our association, please do not hesitate to contact me, or speak to a director.

Russell Gibson, President

ROCKCLIFFE PARK FOUNDATION



The Rockcliffe Park Foundation (RPF) is a registered charity established by the residents at the time of amalgamation with the City of Ottawa to manage and raise funds for an endowment that provides grants to support community programs and initiatives in three core areas: community-building, history and heritage, and environment.

2021 Board Members:

Sarah Baxter, Chair

Ryan Kilger, Vice-Chair

Dennis Waite, Treasurer

Jane Newcombe, Corporate Secretary

Anthony Carty

Alexandra Colt

Heather Hickling

Fiona Murray

Jane Panet

Paul St. Louis

Donna Taucer

www.rockcliffeparkfoundation.org

info@rockcliffeparkfoundation.org

by Sarah Baxter

As is our summer tradition at the Rockcliffe Park Foundation, we take a break from board meetings, but that doesn't mean nothing happens. Our sub-committees and working groups continue on with their efforts to strengthen the RPF. Here is a quick rundown of just some of the RPF's activities over the summer months:

The Endowment: Nothing is more important than ensuring that the endowment funds to which residents, past and present, have generously contributed are well-managed. After a thorough RFP process led by Paul St. Louis and following on the heels of decades of careful stewardship by Mark Ellis, we started a new chapter with the successful candidate: Bernard St. Lewis, Director and Senior Portfolio Manager with Scotia Wealth Management.

With the endowment portfolio in good hands, we will soon be kicking off our annual appeal, to strengthen that fund that supports the work of our Rockcliffe Park Residents Association. The RPF makes annual grants to the RPRA for important community initiatives, popular programming, as well as ongoing work in our three core areas: community, history and heritage, and environment.

This summer we endorsed the City Council motion put forward by Councillor Rawlson King supporting the application made by the RPRA to the National Historic Sites and Monuments Board to have Rockcliffe declared an Historic District of National Significance. We are thrilled the motion passed and congratulate Susan Peterson d'Aquino and Martha Edmond, and their RPRA team, on their efforts. We hope for continued success with this designation.

Another way we can celebrate Rockcliffe, its history and environment, are the efforts

by the RPRA, RPF, community members and experts to restore the Stone Circle. You can read more about the Stone Circle on page 5. More than ever, I think we can all appreciate the value of our shared outdoor spaces.

As we close this summer, the RPF continues to work on updating its website, which had been virtually unchanged since it was first developed in 2010 (practically another century in tech-years). Once the new website is completed, we hope that you will find it to be accessible and useful. A special thank you to the RPRA's Daniel Goldberg for his assistance and to neighbour Hannah Vermaeten for her work with the RPF website working group.

Sarah Baxter
Chair
Rockcliffe Park Foundation

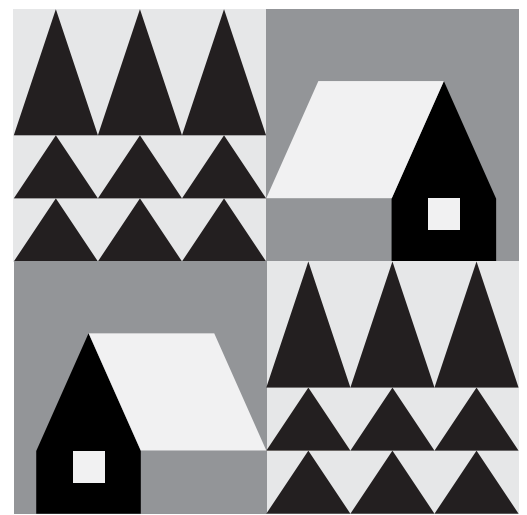
THE STONE CIRCLE: WHO KNEW?

by Jane Panet

Rockcliffe Park has much to offer, but who knew one unique offering is that it is home to an important piece of landscape art? Right in the heart of our community sits landscape art that is so significant that according to retired Chief Landscape Architect of the National Capital Commission (NCC), Gerald Lajeunesse, it should once again become a destination for community residents of greater Ottawa, a place he says visitors to our Capital would want to visit. It is, of course, the Stone Circle. Accolades for this space are plentiful: The Canadian Society of Landscape Architects (CSLA) describes the Stone Circle as "an example of how architects shape cultural landscapes" and that it "celebrates one of Canada's milestones and represents a pre-eminent example of design." the late Cornelia Oberlander OC, a giant in the world of Canadian landscape design and the creative genius behind the design of such signature public spaces as the National Gallery of Canada, Ottawa; Robson Square, Vancouver, and the Museum of Anthropology, UBC, pronounced in 2017 on the Stone Circle: "... this has to be restored and preserved...we have too many places of destruction."

Following my invitation to visit the site, Linda Dicaire, a long-time Rockcliffe resident, and her former colleague at the NCC, Gerald Lajeunesse, have offered to help the Rockcliffe Park Residents Association and the Rockcliffe Park Foundation to create a plan for restoring the Stone Circle, that will preserve the essence of landscape architect Humphrey Carver's vision while at the same time updating the space and bringing it up to code. Both Linda and Gerald bring considerable experience to the task. Linda is honoured to be a Fellow of the CSLA. One of the many important projects she has designed and which is on-going, is The Vimy Foundation Centennial Park, a garden

of remembrance adjacent to the Canadian Vimy Memorial National Historic Site, on Vimy Ridge in France. She also designed its furniture. She also just happens to be Chair of the RPRA Heritage Committee. Gerald, also an honoured Fellow of the CSLA, is a 32 year veteran of the NCC and is committed to projects that promote environmental sustainability, community involvement, and civic pride. His present passion is the creation of a national botanical garden 'Canadensis' at the Central Experimental Farm. Linda and Gerald are contributing to this as volunteers, without remuneration. There is no time frame but we promise you, you will be hearing more from us in the near future. In the meantime, if you have comments or ideas that you would like to contribute, please email us at info@rockcliffeparkfoundation.org.



COMMUNITY

This is the second article in a series on the once magnificent and commemorative Stone Circle. Located in the Village Green (the park area bounded by Springfield Road on the west and Mariposa Avenue on the south), the Stone Circle was officially opened by G.G Roland Michener in 1967 to celebrate Canada's centennial. The circular flagstone and river rocks paved space, anchored in the centre by two boulders, and ringed by maple trees, has unfortunately fallen into a state of disrepair.

ROCKCLIFFE PARK FOUNDATION DINING WITH THE AMBASSADORS



H.E. CHANG KEUNG RYONG KOREAN AMBASSADOR TO CANADA

by Fiona Murray

Dining with the Ambassadors (DWA) is the Rockcliffe Park Foundation's principal fundraising event. The highly anticipated event features wonderful dinners held in many of the official residences of Ambassadors and High Commissioners who make Rockcliffe home. The biennial gathering not only raises funds for the Rockcliffe Park Foundation, supporting many of our community programs and initiatives, but also unites neighbours and introduces them our visitors from abroad. What started as a small idea to encourage our Rockcliffe community to get to know our diplomatic visitors has become a favourite neighbourhood tradition.

The end of summer brings its own kind of renewal as our neighbourhood once again welcomes a wave of "come from aways" in a cohort of new visiting diplomats. The Rockcliffe Park Foundation is excited to be able to build on a new tradition by asking newly arrived heads of mission to share a favourite recipe from home.

In this issue, we welcome His Excellency Chang Keung Ryong, Ambassador of the Republic of Korea and his wife, Mrs. Yong Suk Suh and their two sons. They are pleased to share their summer soup recipe: Samgye-Tang, a chicken soup with ginseng.



Ambassador Chang comes to diplomacy via a prestigious academic career, which included earning his Ph.D. from McGill University in 1996. After a long teaching career at Kwangju Women's University, he returned to Montreal in 2014 as a visiting

professor. After returning to Korea, Chang left academia to work at the Institute for National Security. Prior to his appointment to Canada, he was also Chairman of the International Cooperation Standing Committee for the 19th National Unification Advisory Council (NUAC) in Korea.

SAMGYE-TANG, or Korean Ginseng Chicken Soup for the Soul, is a healthful aromatic soup served throughout the year but mainly during the sweltering Korean summers. It is the delicious practice of 'fighting heat with heat' to overcome the hottest days of the lunar year, allowing the body to be nourished and balanced through healthy foods. Samgye-tang is made by simmering a whole young chicken stuffed with ginseng, garlic, jujube fruit, chestnuts and sweet (glutinous) rice. Considered an energy-boosting dish best eaten during Sambok/Boknal (Chobok, Jungbok, and Malbok), the three hottest days of the year, it is also a classic Korean dish that has become popular among international diners. Samgye-tang is deliciously fragrant and helps rebalance your hot and cold energy, replenishes stamina and gives breath

to one's soul. Thank you to Mrs. Yong Suk Suh for sharing this special recipe and we hope you enjoy recreating it.



SAMGYE - TANG

(KOREAN GINSENG CHICKEN SOUP FOR THE SOUL)

Courtesy of H.E. Chang Keung Ryong

Ingredients

4 whole chickens (cornish hens, 1lb (500g) each, giblet removed)
20 cups water
1 oz (30g) green onion for serving

Stuffing

1½ cups (11 oz, 330g) glutinous rice
4 fresh ginseng roots (if unavailable, red ginseng or red ginseng extract may be used)
8 cloves garlic (1 1/3 oz, 40g)
8 chestnuts
8 dried jujube fruit (also known as red dates; dates or prunes may be substituted)
Fresh ginger to taste, if desired

Preparation

1. Wash the cavity of the chickens under cold running water. Cut off the yellow tail fat and remove any excess fat inside the chicken cavity.
2. Wash the glutinous rice and soak in cold water for 30 minutes. Drain in a colander. Note: rice can be soaked well in advance and stored in fridge.
3. Peel ginseng roots by scraping with knife and wash under running water. Peel the garlic and wash.
4. Peel and open the chestnuts. Wash the jujube fruit.
5. Stuff the cavity of each chicken, in alternating layers, with the soaked sticky rice, 1 ginseng root, 2 cloves garlic, 2 jujubes and 2 chestnuts. Twist the chicken legs and tie them with kitchen twine to keep the stuffing in.
6. Chop the green onions.

Cooking

1. In a large pot or Dutch oven, place the 4 stuffed birds side-by-side. Pour 20 cups of cold water. Cover with a lid and bring to a boil over high heat.
2. When it boils, reduce the heat to low and simmer for 40 minutes, skimming off any foams that rise on the surface.

3. Transfer each chicken into a large/deep individual bowl or a small earthenware pot, and ladle the soup broth over top.

4. Sprinkle/top with the chopped green onions, salt and black pepper on the side, allowing each person to season the soup and chicken to their taste.

Sesame seeds and a side of Kimchi are suggested garnishes.

Serves 4-8 (depending on size of chicken/cornish hen)



ROCKCLIFFE PARK WINS CITY SUPPORT FOR NATIONAL RECOGNITION



Did you know?

During the October Crisis of 1970 soldiers set up camp in Rockcliffe to provide protection for Cabinet ministers, senior government officials, diplomats, and at the Rockcliffe homes of two former prime ministers: Lester Pearson and John Diefenbaker.

by Martha Edmond and Susan d'Aquino

City Council has unanimously voted in favour of Councillor King's motion that the City support our application to the Historic Sites and Monuments Board of Canada to have Rockcliffe Park designated an Historic District of National Significance. If our application is successful, Rockcliffe Park will be the first such designation in Ottawa. News of our application first appeared in our April 2020 Newsletter.

Designation would recognize the significance of our village in the history of Canada – a special place that has been protected and enhanced by the efforts of generation after generation of caring residents. Such designations create no new obligations on residents, the city, or the province, but are a singular distinction.

By way of background, there are currently 26 National Historic Sites in Ottawa. The first to be designated was the Rideau Canal in 1925. Others include the Aberdeen Pavilion, Beechwood Cemetery, Central Experimental Farm, Chateau Laurier, Earnscliffe, Laurier House, Maplelawn, the National Arts Centre, Parliament Buildings, the Mint, and one in Rockcliffe Park – the Hart Massey House.

There are currently no Historic Districts of National Significance (a category among National Historic Sites) in Ottawa. There are about 40 such districts throughout Canada. Some examples are Lunenburg, La Malbaie, Gastown area of Vancouver, Powell River, St. Andrews, Senneville (near Montreal), Annapolis Royal, Marysville (NB), Niagara-on-the-lake, Arvida, Westmount, Town of Mount Royal (Montreal), and most recent, Uplands in Oak Bay in Victoria.

We are enormously grateful to Martha Edmond, Rockcliffe Park's historian, for doing the extensive research and writing required for this application. We are pleased that Heritage Ottawa, the chair of New Edinburgh's heritage committee, our Village Foundation and a number of residents of Rockcliffe Park also wrote to City Council urging their support for Councillor King's motion.

Here are some words of Rockcliffe Park residents themselves who eloquently argued in favour of the application. Perhaps these excerpts from their letters to City Council best sum up what it is like to live here and the importance we attach to our community.

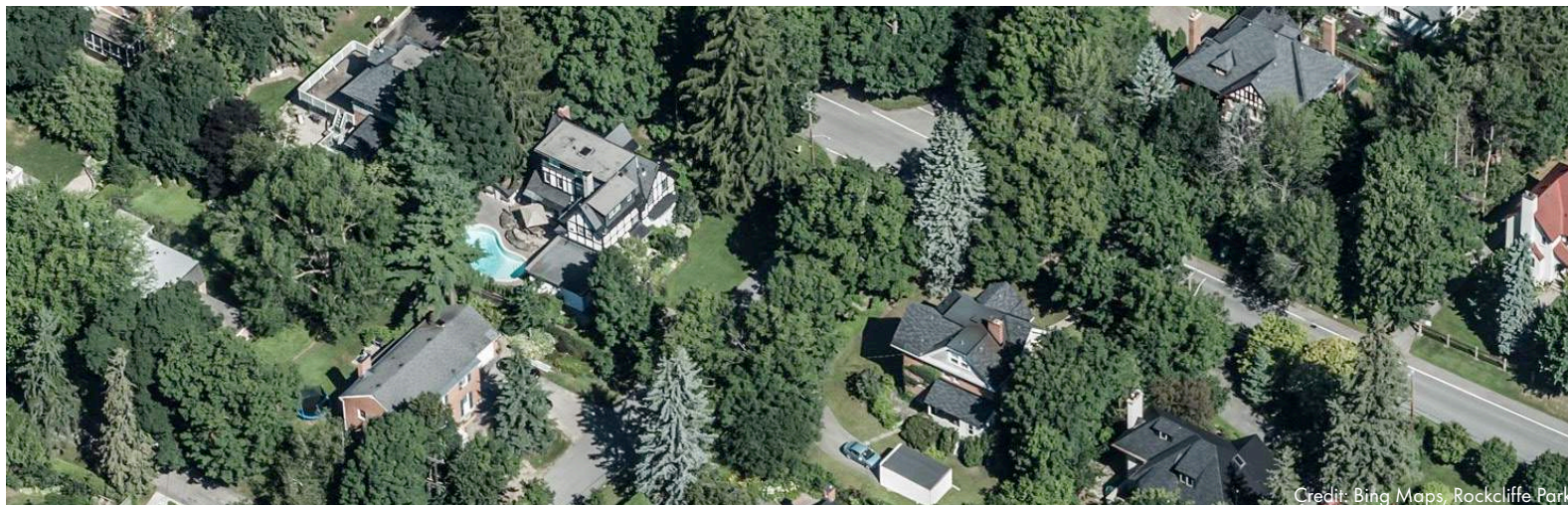
"An Historic District of National Significance designation not only recognizes Rockcliffe Park's history but provides the opportunity to both celebrate and inform present and future residents of Rockcliffe Park's history."

"Other special cities across Canada have received this designation; it seems especially appropriate and important for the City of Ottawa to have a designated historic district within its municipality."

"While planned as a residential area in a bygone era, Rockcliffe Park seems ageless and organic, and while it has the practical features suited to eastern Canadian urban living it has also the many charms and wholesome benefits of a parkland landscape."

"The village represented remarkable forethought when it became one of the earliest subdivisions in Canada, planned entirely as a residential park."

"It has been the home of former Prime Minister John Diefenbaker, Queen Juliana of the Netherlands, C.D. Howe, Jack Pickersgill and a great many Canadians of historical



CITY OF OTTAWA OFFICIAL PLAN: NOTICE OF SPECIAL MEETING - DATE CHANGE

The following was taken from an email regarding the timeline for Ottawa's Official Plan:

importance. In wartime, it lent its name to an Air Force Base and to the H.M.C.S. Rockcliffe."

"I saw firsthand how important our efforts were to preserve the natural environment and architectural quality surrounding us, not solely for our benefit as current residents, but to ensure the opportunity for future generations to enjoy this unique and historic quarter of Ottawa."

"First and foremost are the trees, the magnificent old pines, the stately lindens, the splendid maples that glow in the autumn, cedars and oaks that tower over the houses, as well as spreading old fruit trees that brighten the streetscape in spring. These outline the streets but informally, complementing and highlighting the properties, where there are few fences or walls but an open, undulating ribbon of informal gardens - or gleaming snowfields most of the winter."

"The designation constitutes no budgetary or regulatory burden on the city, but rather enhances its profile as a modern progressive city that celebrates its heritage and its charming and diverse districts."

"It would reflect our shared values as a nation which builds on the dedication of its citizens and its communities."

"We have had the opportunity to visit other National Capitals all over the world, which make us fully aware that Rockcliffe adds immeasurably to our own."

"A peaceful island of calm and permanence within the urban landscape."

"There are no plaques on these houses, but there is an abiding aura of history to Rockcliffe Park and a quiet sense of purpose and service in the community."

The next step is for the Historic Sites and Monuments Board of Canada to do their own research to determine whether they agree that Rockcliffe Park is worthy of the requested designation. The final decision rests with the Minister responsible for the Board – the Minister of the Environment and Climate Change. This next step will take some time.

The City of Ottawa has actively been reviewing and tracking public feedback on the draft new Official Plan, which has resulted in a number of recent revisions. The proposed revisions are being published on the City's Engage Ottawa webpage for public review as they become available. It is anticipated that the final revised draft of the proposed new Official Plan will be published on the Engage Ottawa webpage later this month.

In order to provide additional time for public review in advance of Committee and Council consideration of the final staff report, the Planning Committee co-Chairs and the Agriculture and Rural Affairs Committee Chair have agreed to move the joint statutory meeting of the Planning Committee and Agriculture and Rural Affairs Committee to October 14, 2021.

Please be advised of the following revised dates in respect of the consideration of the comprehensive final draft of the new Official Plan:

- Wednesday, September 29th -

Public Open House

- Thursday, October 14th -

Joint statutory meeting of the Planning Committee and Agriculture and Rural Affairs Committee, under the Planning Act, convened in accordance with Subsection 88 of the Procedure By-law pursuant to the delegated authority granted by City Council at its meeting on February 10, 2021. The location and format of this meeting is to be determined. Details will be communicated at a later date.

- Wednesday, October 27th -

City Council Consideration of the report on the final draft of new Official Plan

As such, this email constitutes a revised Notice of this Special Meeting to all Members of Council.



Credit: Bing Maps, Rockcliffe Park

RESTORATION OF THE MCKAY LAKE "DOGWALK"

by Susan d'Aquino, Chair, Heritage Outreach Committee

The popular pathway that joins Lansdowne Roads South and North on the west side of McKay Lake has long been known as the "Dogwalk". This beautiful walk is an important part of Rockcliffe Park's history and heritage.

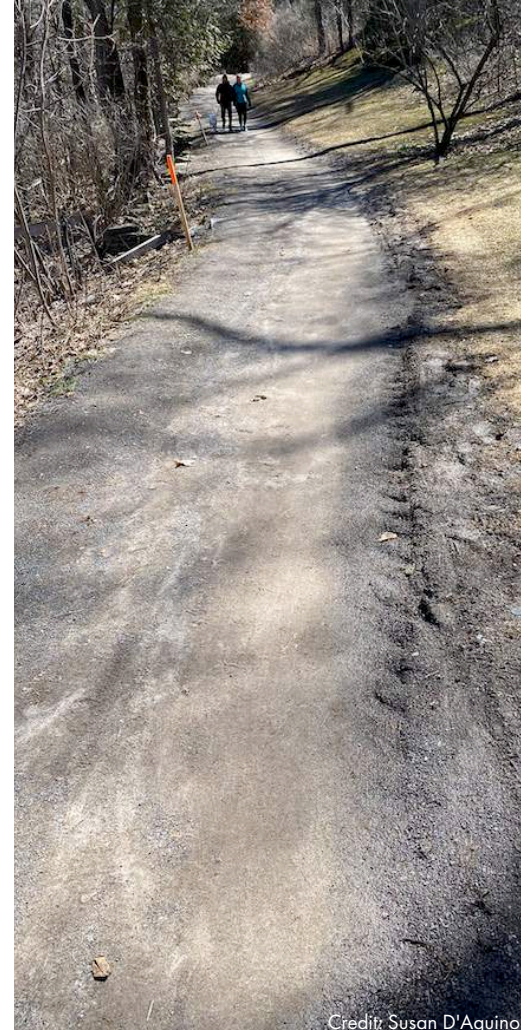
Originally a passable road, it was closed to traffic in 1930 because the steep cliff-face by the lake was deemed to be too dangerous. When still a road, it was used extensively during World War I by troops to get to the Mile Circle, a staging area for the Canadian Expeditionary Force. Processions of military corteges regularly made their way along the road to Beechwood Cemetery to carry soldiers who had fallen in the war.

In the January 2020 Newsletter we reported that a landscape architect had been engaged by the RPRA to draw up plans to restore the pathway, particularly at the south end where it has been badly eroded by run-off and widened by the addition of gravel and asphalt. Lacking adequate stone markers at that end, cars occasionally enter the pathway to park or drive its length.

The report prepared by landscape architects CSW describes how stormwater runoff where Lansdowne South meets Mariposa is causing ongoing erosion and deterioration of the Dogwalk, and how this could be dealt with. It also sets out details for the rehabilitation of the pathway itself. The report will be posted on the RPRA website.

Unfortunately, this spring when city vehicles were sweeping the roads in Rockcliffe of the winter's accumulated grit, a vehicle mistakenly made its way along the Dogwalk and swept up most of the grit which forms the base of the pathway, leaving ridges of it along the sides of the path. A photo shows the result.

Councillor King's office has advised us that it could be a long time before the city gets around to addressing the runoff problem, given all the city's other infrastructure priorities. The RPRA is therefore exploring some possible interim steps to improve the situation – including placing stones to better mark the south end of the dogwalk to prevent vehicle access, removing asphalt and gravel, and perhaps some restoration of eroded edges of the path. We will also renew our request to our Councillor to see what he can do to get the city to deal with the runoff problem.



Credit: Susan D'Aquino



Did you know?

Netflix favourite and Canadian TV hit Schitt's Creek has a Rockcliffe connection. Emmy award winning Annie Murphy, who plays Alexis Rose, is an Elmwood alum (class of 2004).

ART AND ARTEFACTS



Did you know?

Crichton Lodge can be called Rockcliffe Park's oldest home. Located at 160 Lisgar Road, it was built in the 1880s and remains the original Gothic Revival villa despite some later additions. Purchased by the Norwegian government in 1949, it is the official residence of the Norwegian ambassador.

The following information is extracted from the Welcome to Rockcliffe booklet for new residents, entitled Rockcliffe Park A-Z. If you have a new neighbour or if you recently moved to Rockcliffe Park and would like a copy of it, please contact us for a free copy.

Rockcliffe Park's rich village history is evident in the many works of art and artefacts displayed inside the Rockcliffe Park Community Hall and outside in the public gardens around the community.

In the Rockcliffe Park Community Hall:

Coat of Arms

In 1994, the Village was granted a distinctive coat of arms that is registered in the Public Register of Arms, Flags and Badges of Canada. It is displayed in the Springfield Road entrance. The crest depicts our environs of water and trees and two locally found birds, the Pileated Woodpecker and the Green-backed Heron. The motto, *Inter Arbores F* meaning "amid the trees we ", reflects how our lives are nurtured by our natural environment.

Second World War Honour Roll

On the occasion of the 50th anniversary of the end of the War, a plaque and an Honour Roll were placed in the Rockcliffe Community Hall to commemorate the men and women from Rockcliffe who served in the Second World War. Almost 20 percent of the persons living in the Village at that time served in the War – approximately twice the national average. The Honour Roll book is permanently on display.

Ship's Bell and Crest of HMCS Rockcliffe Park

During the Second World War, HMCS Rockcliffe Park – an Algerine Class minesweeper – saw action on the Atlantic patrol. Residents of the Village took part in the national program and adopted their namesake, agreeing to supply "comforts" for the ship's company. In October 1994, one of the ship's two bells and crest, a painting of the ship by Ross Helwig and a description of the ship, were presented to the Village for

safekeeping. These hang in the northwest corner of the hall. More recently, the RPRA obtained a photo of the crew of the HMCS Rockcliffe Park, which also hangs in the hall, courtesy of The Memory Project, Historica Canada.

Outdoors:

Public Sculpture

In the Village Green there is a charming gift to the children of Rockcliffe from the children of Wilson and Henrietta Southam. Whimsically perched on two boulders are the tiny Squirrels and Birds, created by local sculptor Art Price in 1967. Nearby is a small memorial sundial, installed in 2003.

Pine Cones

At the west entrance to the Jubilee Garden are three large metal pine cones, titled *Regeneration*, by sculptor Floyd Elzinga. The sculpture was donated in 2009 by the Gualtieri family to honour their mother, Margot, a longtime contributor to our community.

The Sundial

The Sundial, by Bruce Garner, is a 1997 gift of the Ambassador of Kuwait. The tall silver-coloured sculpture stands on the lawn on the south side of the Library.

McKay Lake Markers

For almost 90 years, two special engraved markers have graced the Village just east of McKay Lake. In 1930, the Ottawa Field-Naturalists' Club placed two engraved boulders, one on the grassy slope in the Hillsdale Triangle just beyond McKay Lake, and the other to the west of the Hillsdale Bridge. The Club had conducted many field trips to McKay Lake. The Hillsdale Triangle marker reads as follows: "The level of McKay

Lake stood at around the level of this marker a few thousand years ago..." and refers to the marl beds composed of fresh shells deposited in the lake. The marker west of the Hillsdale Bridge records that the lake dates from the close of the submergence of the Ottawa Valley by the post-glacial Champlain.

Birkenfels Gates

The handsome gates at the Buchan Road entrance into the Jubilee Garden, restored and erected in 2007, originally stood at the north end of Birkenfels Road. They were the main gates of the Birkenfels estate and probably date from the period of construction of Birkenfels, which began in 1864. The house was demolished in 1991 and the land subdivided into the lots surrounding Soper Place and Perley Court.

Village Entrance Markers

In 2000, the former Village Council placed bronze plaques on large boulders to mark the nine principal road entrances to the Village and its designation as a heritage conservation district in 1997. The boulders come from the area of the Village Green and the plaques were cast in Merrickville.

The boulders come from the area of the Village Green and the plaques were cast in Merrickville.

Poets 'Pathway

On the north side of the Hillsdale Bridge stands a boulder displaying a plaque inscribed with the poem *Indian Summer* by Canadian poet William Wilfred Campbell. The Poets project donated the plaque in 2015.

SEP

02

SEPTEMBER

GATINEAU HOT AIR BALLOON FESTIVAL

from Sept. 2 - 6

Program information at
www.montgolfieresgatineau.com

15

SEPTEMBER

THE ASINABKA FILM AND MEDIA ARTS FESTIVAL

from Sept. 15 - 19

The Asinabka Film and Media Arts Festival is
celebrating its 10th Year presenting
Indigenous Arts

asinabkafestival.org

*Please note, event information
may be out of date due to
Covid-19 and public health
guidelines. Please confirm
details with event organizers,
where applicable.*

OCT

07

OCTOBER

CANDLELIGHT: SONGS FROM MAGICAL MOVIE SOUNDTRACKS

at 7:00 pm and 9:15 pm, and various dates

An imaginative and immersive experience.

Advance purchase of tickets are required.

Check out [feverup.com/m/95397](https://www.feverup.com/m/95397) for more
information.

11

OCTOBER

THANKSGIVING & INTERNATIONAL DAY OF THE GIRL

22

SEPTEMBER

THE OTTAWA INTERNATIONAL ANIMATION FESTIVAL

from Sept. 22 - Oct. 3, online.

For further information, go to animationfestival.ca

RPRA BOARD MEETING

Rockcliffe Park Residents' Association meeting, over Zoom.

<https://us06web.zoom.us/j/4087894880?pwd=RWw0ZGt4STF0NjhGa2RJWEhvY3lIQT09>

For further information, go to rockcliffepark.ca

24

SEPTEMBER

IMAGINATIVE WATERCOLOURS FOR SENIORS, PART 1 & 2

Fridays, Sept. 24 - Oct. 1, at 10 am, online.

Learn the basics with art instructor, Maya Hum, while discovering fun and unexpected ways of painting with watercolours! Registration required.

For further information, check out the Ottawa Public Library website or email wellnessfridays.vendredissante@bibliooottawalibrary.ca or phone InfoService 613-580-2940.

29

SEPTEMBER

CITY OF OTTAWA PUBLIC OPEN HOUSE

Exact timing TBD.

For more information, check out Engage Ottawa's webpage at : engage.ottawa.ca/the-new-official-plan

14

OCTOBER

NEW CITY OFFICIAL PLAN

Joint statutory meeting of the Planning Committee and Agriculture and Rural Affairs Committee, under the Planning Act to provide additional time for public review in advance of Committee and Council consideration of the final staff report of new Official Plan.

For more information, check out Engage Ottawa's webpage at : engage.ottawa.ca/the-new-official-plan

27

OCTOBER

CITY COUNCIL REPORT ON OFFICIAL PLAN

City Council consideration of the report on the final draft of the new Official Plan.

For more information, check out Engage Ottawa's webpage at : engage.ottawa.ca/the-new-official-plan

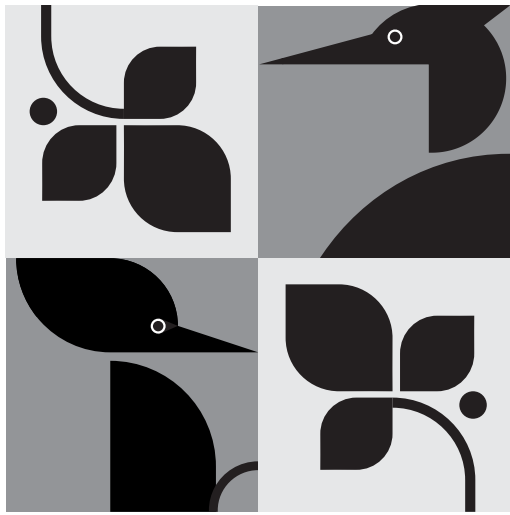
28

OCTOBER

RPRA BOARD MEETING

Rockcliffe Park Residents' Association meeting, over Zoom.

For further information, go to rockcliffepark.ca



WRAP-UP – CATERILLAR AND MOTH OUTBREAK 2021

By Iola Price

ENVIRONMENT



Did you know?

While water levels have changed, a traditional portage route of the Algonquin Anishinaabe people passes through Rockcliffe and Lindenlea. The trail between the south shore Ottawa River below the Rideau Falls and the east bank of the Rideau River above the falls was used in the early 1880s when Constant Pinesi served as Grand Chief of all the Algonquin Anishinaabe people and the Rideau-Rockcliffe area was known to be one of the Chief's hunting grounds.

What started with Anne Galipeau's plea to Lindenlea residents to help control the LDD/ zig-zag moth (gypsy moth*) caterpillars in Lindenlea's parks and open spaces, quickly morphed into a four-community-wide and neighbourhood operation. We are very thankful that her initial alarm about that shocking infestation and the potential risk of damage to our neighbourhood trees from the ravenous caterpillars had such a wide-ranging impact. Why was this worrisome? Ottawa was in a Level 1 drought situation and without rain or emergency watering, our trees would lack the resources to grow new leaves this season. This moth, in its caterpillar stage, will eat leaves and needles of up to 500 species of trees, shrubs and flowers. Deciduous trees, having carbohydrate reserves in their roots are able to re-leaf, given sufficient water; coniferous trees hold all their reserves in their needles and if massively defoliated, have no spare carbohydrates to produce new needles and so will die.

Residents sprang into action and adopted local trees, wrapping them in burlap or garden cloth or sticky tape, and working hard daily to remove and dispose of the many thousands of caterpillars before they could do their worst to our tree canopy. Marilyn Venner took "ownership" of the crabapple trees in the Jubilee Garden and by diligently inspecting the burlap and removing countless caterpillars, prevented extensive damage and defoliation to them.

In addition to the article in the July issue of the Rockcliffe News, I sent regular updates via the three community Listservs with more information on control options and methodology and the life cycle of the moths, and New Edinburgh resident Tracey Clark donated burlap sacks from the Bridgehead roastery. Doug Young used his industrial shop vacuum to clean caterpillars and frass

(caterpillar poop) from his and adjacent properties and provided tips via the listservs to others on how to do it. His techniques and advice proved useful as residents in our four communities worked to clean up the mess.

This particular pest was introduced into the United States in 1869, it escaped and quickly spread, eventually reaching Canada. The first occurrence in Ontario was in 1969 with widespread occurrence in the 1980s. Every seven to ten years the populations increase in size but 2020 and 2021 saw even greater numbers than normal with over 600,000 hectares of forest (that excludes city trees) defoliated in Ontario in 2020. The male caterpillars go through five instars/stages (shedding of an old skin to allow for growth into the next stage) and the females have six (they need that extra size to produce their 300-1000 eggs). A sixth instar female caterpillar can be up to three inches long and she eats continuously. Pupation (the cocoon stage that prepares the insect for emergence as an adult) starts in June, lasts about two weeks and then the moths emerge, ready to mate. The females are flightless – they emerge from their cocoons and immediately emit a pheromone that the males sense and use to find them. That pheromone is unique to the adults of this species – no other insect is sensitive to it, nor are the caterpillars.

It was at this stage that we began to construct and distribute traps armed with pheromone lures to confuse and catch the unsuspecting males before they had a chance to mate. Bottle and pan traps popped up everywhere and were amazingly effective at catching and drowning the hapless males. There were many reports of birds and small mammals, especially chipmunks, hopping into the pan traps and eating the dead adult moths – recycling nature's "bounty" in action! Marilyn Venner, Patrick Blonar and

I installed bottle traps in the Jubilee Garden, the Village Green and the Caldwell-Carver Conservation Area on McKay Lake and over the course of July and August captured and disposed of thousands of adult LDD/zig-zag moths.

But, of course, we didn't prevent all matings and many eggs have now been laid and will begin to hatch in April 2022. This time we will be ready and in late March or early April we will then begin the cycle of wrapping and monitoring our trees and disposing of the thousands of caterpillars. Look for eggs on tree trunks and limbs, on the ground or at ground level on trees, the walls of your house, wheel wells of your vehicle, etc. If you do need to remove the egg masses now, the RPRa website under the Environment tab - see <https://rockcliffepark.ca/environment-and-outdoor-spaces/> for details on how to ensure that no eggs escape – they will survive over winter if left on the ground. When scraping or vacuuming those egg masses, it helps to lay down a tarp around the tree to catch every egg that inadvertently drops. Because there are natural tiny wasp predators who lay their eggs in the moth egg masses, leaving the egg masses in place until September or October allows the wasps to complete their life cycle.

In the meantime, if you haven't done so, please remove the burlap/gardening cloth and tape from our trees; left for long periods these materials trap moisture and will lead to bark damage, putting further stress on the trees. Place the wrapping material in a bucket with detergent and water and leave it for at least two days, so that any remaining pupae and female moths and their eggs will be killed. Immerse the tape in a detergent and water solution if it has pupae or eggs attached to it. Vacuumed egg masses should be similarly treated. Please DO NOT throw the burlap out in the

garbage before the soaking and destruction of live pupae and eggs is complete. The females die shortly after laying their eggs but as some mate more than once, immersing any females on the burlap or tape is a good idea.

By now, very few moths are flying about in search of females but to be sure, leave the lures and traps in place until the end of August as some late-emerging females might still be in place, waiting for a male. Regrettably, it does not appear that lures will be available in 2022 so please do not throw them out. Place them in a plastic bag and then put the bag in a jar in your freezer for possible use in 2022.

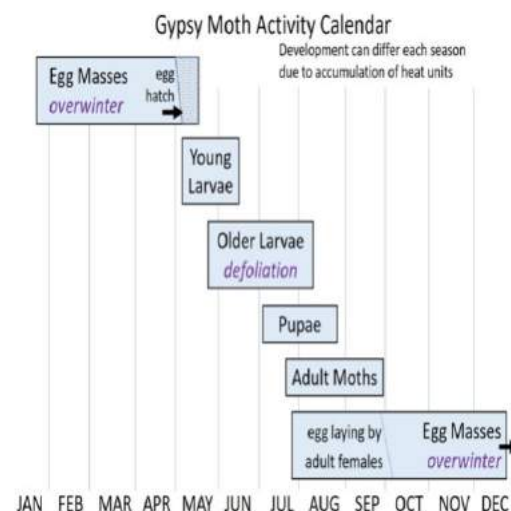
We are in another mini-drought. Water your street and private trees to avoid early leaf drop and further stress on them.

*The Entomological Society of America has withdrawn this common name but no new name has been adopted. For the interim, we use LDD (for *Lymantria dispar dispar* the scientific name) and a European common name zig-zag moth, instead of the old culturally offensive name



Credit: Iola Price

Clockwise from Top: Female moths and egg masses; Female (top) and male (below) pupae; Gypsy moth activity calendar; bottle trap





Did you know?

Rockcliffe was officially granted a coat of arms in 1994. Its features include a pileated woodpecker and a green-backed heron, with the latin motto, “Inter Arbores Floremus” - we flourish amongst the trees.

Photographs from around the neighbourhood.

'Rockcliffe Park'



'Hemlock Lake'



'Rockcliffe Park'



Photographs taken from rockcliffepark.ca/gallery/historic-photos/



by Heather Mace, Principal

The 2020-2021 school year was dominated by closures, cohorts, hand washing and masking wearing. While a challenge for students, parents, and educators, Rockcliffe Park PS (RPPS) found ways to take advantage of a tough situation.

Educators at RPPS identified 18 different outdoor learning spaces on school property. These allowed for the use of outdoor learning strategies. For example, recycled plastic cardboard-like boards as both sitting spots and as reusable learning surfaces. Students recorded their observations on these boards, whether by writing words, drawing pictures. Once in the classroom, these observations formed the basis of writing tasks. This strategy meant that students had experienced the learning; it meant that every student had something to write about. Other strategies led to kindergarten students using found materials to create shapes such as letters or numbers; a useful strategy in the development of early literacy.

The custodial team used school closure time to update many areas of the school. There were 7 different kinds of blue paint throughout the school, whether on bulletin boards, doorways, walls, or lockers. With the support of a behavioural specialist, the school team selected soothing colours in keeping with Forest Learning principles. In a typical year, painting is overlooked as custodial teams work to meet deadlines for summer and holiday cleanings. The school's hallways, displays and learning spaces have now been updated using a combination of grey, sage green and white. The main office has been reconfigured to be more student friendly.

The RPPS library was designated for a renewal in summer 2020; the project was cancelled at the beginning of the pandemic. The space

has been redesigned as a Learning Commons and a Maker Space. Makerspace is a constructivist and constructionist educational approach. A makerspace presents readily-available materials that can act as a provocation for inquiry, as well as modern technology and items in which to invent. The maker movement is about teaching and learning that is focused on student centered inquiry. It is not the project done at the end of a unit of learning, but the actual vehicle and purpose of the learning. The RPPS School Council has worked in partnership with school staff to support this initiative.

With the help of an architect hired by the school board, the project design was tweaked and finalized during the spring closures. The entire library collection was culled and placed into boxes in the gymnasium in anticipation of its new space. The project is underway in summer 2021 and we look forward to its reopening in the fall. Maybe in time for the return of the Rockcliffe Park Book Fair!



Rockcliffe Park Public School (RPPS) is a JK-grade 6, dual track school. It is celebrating its 100th anniversary next year! RPPS has an enrollment of approximately 390 students (460 in non-Covid times), representing over 20 countries and languages. It offers programs in English and Early French Immersion.

RPPS draws from the Village of Rockcliffe, Lindenlea, New Edinburgh, Sandy Hill and Lower Town. The school office is located adjacent to the Police station and the Library. The Village and the school share the use of the grounds and the ice rink in winter. The Rockcliffe Child Care Center which opened in 1998 is attached to the school.

RPPS staff is comprised of 45 staff members including teachers, early childhood educators (ECE), and educational assistants (EA). We also have a Library Technician, office and custodial personnel and administrators. Our staff is a highly-skilled, hard-working and dedicated group of professionals who endeavour to provide child-centered and authentic learning experiences based on the Ontario Curriculum, while ensuring that literacy and numeracy continue to be a primary focus for our school.

350 Buena Vista Rd
K1M 1C1
www.rockcliffeparkps.ocdsb.ca

ELMWOOD SCHOOL



Elmwood School has been an institution in the Village of Rockcliffe Park for over one hundred years. It was founded in 1915 as the "Rockcliffe Preparatory School" by Theodora Philpot. The School opened in 1915 with only four students, aged four to seven.

Elmwood School is one of the most innovative girl schools in North America teaching girls from pre-kindergarten to grade 12.

Elmwood is a girls' schools and ranked as one of the top 25 private schools in Canada. It is the only school in the region offering all three levels of the International Baccalaureate Programme and one of a handful of schools in Canada to receive the Apple Distinguished School designation.

261 Buena Vista Road
K1M 0V9
(613) 749-6761
www.elmwood.ca

by Jennifer Irwin-Jackson and Lindsay Germano

It was an extraordinary school year for Elmwood students. They demonstrated resilience, enthusiasm, and commitment throughout the many changes the year had in store, and we could not be more proud of them. In June, we came together as a community to celebrate each grade separately, from Prekindergarten to Grade 12, in an in-person certificate ceremony. The energy was palpable as students, parents, and teachers came together to reflect on and celebrate 2020-21. It meant so much to be able to be together to close the year.

Particularly special was the ceremony for the Class of 2021, who came together in their white attire so that the community could celebrate the extraordinary results of this exceptional group. A few highlights:

- 85% of graduates received university entrance scholarships.
- Scholarship offers for the Class of 2021 totalled more than \$7.7 million.
- 93% are Ontario Scholars, graduating with an 80% average or higher.
- These students are highlighted above.
- Programs of study include STEM (57%), Arts, Humanities, Social Sciences (23%), Fine and Performing Arts (5%) and Commerce and Business (7%).

IB results for the Class of 2021 were some of the best the school has ever seen. The average score of 37 per diploma student compares very favourably with the international average of 33. Four of the IB diploma students received a score of 40+, an extraordinary achievement putting them in the ranks of the best students globally.

Of special note is Sabrina Fan '21, Elmwood's Overall Academic Award Winner and the recipient of the Governor General's Academic Award, who received an IB score of 44. This is the highest point total the school has seen and is truly remarkable.

To see the full details of where the Class of 2021 will be studying in the Fall, visit elmwood.ca/classof2021

We look forward to welcoming our students back to campus in September!



ROCKCLIFFE LAWN TENNIS CLUB



by Louise Malhotra

As August is in full swing, the club has an air of vibrancy and positive spirit after the late start to the season. June saw a terrific jump in court usage with members eager to get out to enjoy round robins, tournaments, clinics, and lessons.

Coaches Zhenya and Dan have been busy creating and implementing strong summer programming for recreational juniors, while also catering to a variety of adult skill levels for all players. There is still space in late summer and fall programming, for juniors and adult members, so please view our website for registration details. rltennis.ca

On the tournament scene, congratulations to Mixed Doubles winners Daniel Alfredsson and Louise Malhotra defeating Henrik Alfredsson and Chrissie Houde in an exciting finals event. The Women's Doubles Finals saw Maureen Boyd and Susan Mercereau defeat Louise Malhotra and Bibbi Alfredsson. Lastly, Men's Doubles Finals provided an excellent showcase of tennis with Henrik Alfredsson and Sacha Krishna defeating Shawn Malhotra and Daniel Alfredsson for an exciting finish. Congratulations to all players for a wonderful tournament

turnout. The Singles tournaments will be held throughout September.

Interestingly, the Mixed Doubles trophy awarded this year is a slice of club history. Shortly before the tournament, Ann Armstrong of Toronto discovered a beautiful small trophy awarded to her grandmother Martha Currier, who played as a teenager in the Mixed Doubles event in 1924. Ms. Armstrong sent RLTC the trophy just in time for our tournament finals. As our oldest piece of tournament "hardware", dating the year after our inception, this charming little trophy will be set on top of a larger base and will be awarded annually.

RLTC will celebrate its Centennial Anniversary in 2023. In preparation for this significant milestone, please feel free to share stories, photographs, or memorabilia about the history of our club.

Repairs to the hard courts are underway with final completion slated for the last week of August. The work includes crack repair, resurfacing, and painting the courts. We look forward to our rejuvenated hard courts for a busy September season.

Established in 1923, the Rockcliffe Lawn Tennis Club, is located in the wooded heart of the Village of Rockcliffe Park. The club has been a central gathering space for almost one hundred years, bringing tennis enthusiasts together in the spirit of congeniality and positive sportsmanship.

This private-members club has four premium grade Har-Tru clay and four hard-surface courts nestled under an abundant tree canopy. The attractive clubhouse has a food and liquor licence to provide light snacks and beverages, and social events are offered throughout the season.

The RLTC offers a wide range of programming for all ages and skills, including private lessons, weekly clinics, round robins, ladders matches, tournaments, and junior programs at both a recreational and competitive level.

Throughout the years, the RLTC members have included historically distinguished Canadians such as RH Lester B. Pearson, HRH Princess Juliana (later Her Majesty the Queen Juliana of the Netherlands,) and the RH John Turner. Our club continues to draw a wide range of fascinating members, many with significant global presence, yet an undeniable connection to our local community club.

The RLTC is a welcoming, family-friendly club dedicated to embracing the sport of tennis, encouraging active living, and enhancing our sense of community.

465 Lansdowne Rd N
K1M 0Y1
www.rltennis.ca



AT THE FIELD HOUSE: PEDALHEADS

www.pedalheads.com

@pedalheads

Riley Turpin, Regional Manager, Ottawa

This year has seen another very successful summer of the Pedalheads program operating out of the Rockcliffe Field House.

Our program aims to teach kids everything about bikes from bike safety, bike maintenance and of course, biking! Pedalheads has felt very lucky to make use of the Rockcliffe Field House for our summer camp activities. The year-round sports pad rink has provided the ultimate safe space for our youngest Level 1s to finally takes the leap from training wheels to riding on two wheels for the first time! This is always such an exciting time for our staff to witness the growth and change throughout the course of the week. The programs inspire confidence in our kids, which is essential to their growth as little human beings.

All children were grouped according to riding levels, with some staying close to home base, while others found adventure along the way. Older children took bike trips around the neighbourhood, learning about bike safety and controlled riding in traffic. You may have seen some biking groups as you went through the neighbourhood this summer.

As a primarily outdoor camp, the Field House provided the perfect pit stop for kids to rest and recuperate from all the action. We've filled countless water bottles and made great use of the shade from the iconic overhanging roof.

Thanks for a great summer in the Rockcliffe Field House.

Check out our website for more details about our programs! <https://www.pedalheads.com>

IMPROMPTU NEIGHBOURHOOD CONCERT

Jane Newcombe

Neighbours were delighted to catch a pop-up concert of members of National Arts Centre brass section on July 2nd.

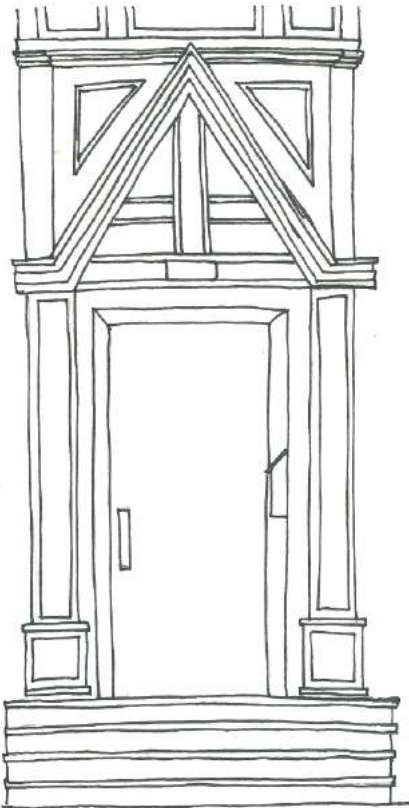
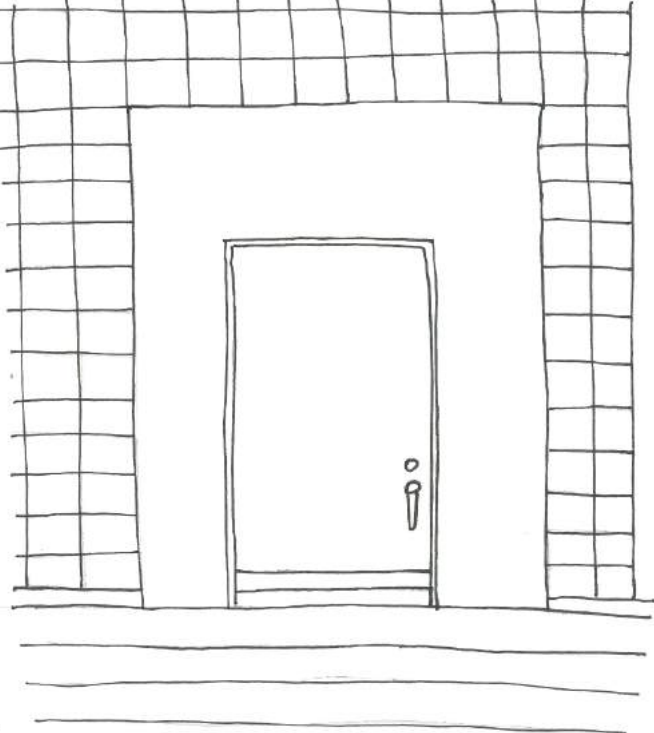
The laneway at 75 Lakeway Drive became the stage and forty passersby on evening walks were the lucky beneficiaries. Thanks to Charlie Watson, a Rockcliffe resident and trumpet player with the ensemble, who borrowed his parents' laneway to host the event. The weather cooperated and it was magical for all. Looking forward to regular programming at the NAC we hope this autumn.

Top and middle photo: Impromptu concert pop-up, Bottom: Pedalheads programming at the Fieldhouse



WHERE IN ROCKCLIFFE:
CAN YOU GUESS THE
DOOR?

Illustrations by Amanda Shore



A LETTER FROM A RESIDENT

By Kenneth Watson

In the current school year, Rockcliffe Park Public School has six portable classrooms on its grounds. These portable classrooms have serious health and security problems.

They are unhealthy because of limited natural light, sub-optimal ventilation and because the kids must walk to the main building, no matter how severe the weather, every time they need to go to the toilet. Children are allowed to go to the washroom only in pairs. However, they are not accompanied by an adult. Security is also compromised by direct access from the schoolyard to the portables. Each portable has a (lockable) single access door to the schoolyard, but they can be approached directly without screening by the main office. There is no instant alarm button in the portable, merely a telephone at the teacher's desk enabling a call to the office, given time.

Unlike the main building, portables do not have a concrete foundation. Their direct exposure to the ground result in a higher risk of molds and radon contamination. They are lit by windows that are about half the size of most windows in the main building. The windows are only on one side of the portable classroom, rather than two sides, which is best practice.

Each single-room portable has a separate fan ventilation system that recirculates air within the classroom and mixes some air from the outside. I was unable to learn how much fresh air there is in the mix; but in the heating season it is more economical recirculate as much air as possible.

The portables are inspected once a month by the principal and a designated staff member, and once a year by someone from district office. However, I think we can safely assume, based on the massive failure of routine inspection to fix the egregious problems in long-term care facilities, that self-inspection often excuses problems that would take money to fix.

During the past 23 years, there have been portables in use at Rockcliffe Park Public School in every year except two (2002-2003 and 2003-2004). Since 2008-2009, there has been between four and six portable classrooms in use every year. Next year (2021-2022) it is estimated that four portables will be in use, accommodating about 60 pupils of the expected school enrollment of 440. The justification for portables has been that they provide flexibility when school enrollment and

programmes fluctuate. However, since they have been in continuous use for at least twenty years, it is clear that they are used because they are cheap. They are not rare. In 2020-21, there were 352 portable classrooms in service in our school district (217 in elementary schools).

The children of the diplomatic community may attend Rockcliffe Park Public School -- or may not attend because of the poor quality of the portables. The refuseniks may not complain, but simply send their kids elsewhere. The physical school does not represent Canada well.

In 2022, the Rockcliffe Park Public School celebrates its 100th anniversary (of the school, not necessarily of the portables). This is an occasion to reassess the use of portables at the school and perhaps replace them with a new building that we can be proud of. However long-engrained apathy makes this unlikely. Letters to our local Provincial representative, to the Ministry of Education and to the School Board have gone unanswered.



Credit: Kenneth Watson



Credit: Kenneth Watson

VILLAGE GREEN CLEAN UP

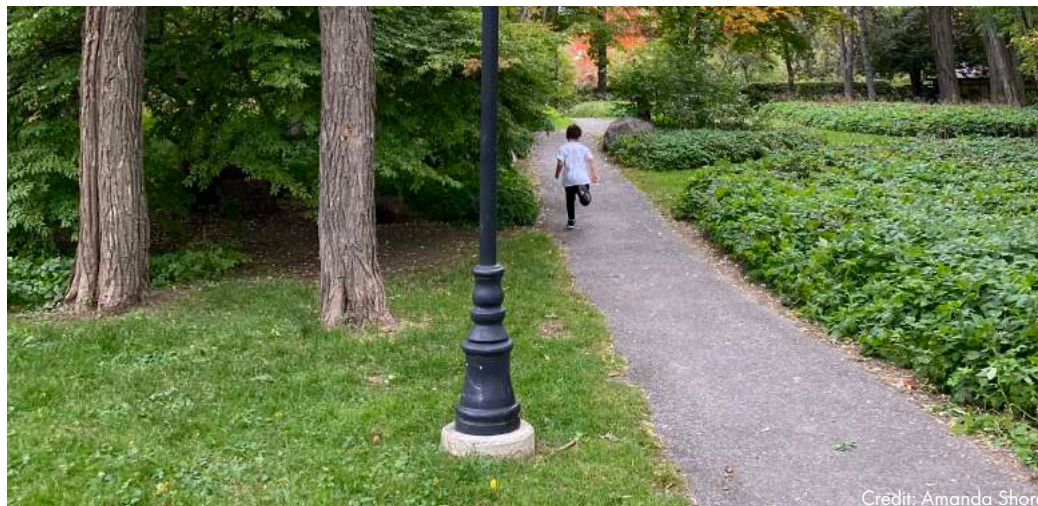
By Marilyn Venner

On an August weekend, 14 volunteers devoted a few hours to cleaning up the Village Green. We removed masses of weeds, dead branches and even buckthorn trees. Peter Lewis, Matthew Henderson and Russ Gibson sawed off large, dead tree limbs. The space looks so much better-tended now.

The hard-working crew filled fourteen leaf bags and six or seven bundles of dead branches from their cleanup around the Community Hall, all of which the heroic City waste removal guys took away two days later.



Credit: Marilyn Venner



Credit: Amanda Shore

EDITORIAL POLICY

The editorial board shall be comprised of the Executive of the RPRA, together with the newsletter editor, if any. Individuals wishing to submit a letter or article to the newsletter should consider the following:

- Letters to the editor may be edited for brevity, content, relevance, where contrary to law (or where it may expose the RPRA to liability), or otherwise at the discretion of the editorial board. When edits are significant, the submission shall be referred back to the author for approval before publication;
- The acceptable length of letters for publication shall generally not exceed 200 words;
- Submitted articles for consideration may be subject to editing and should not exceed 500 words;
- Please limit submissions to one or two clear points;
- Please do not send the same letter repeatedly;
- Keep it civil – letters which are abusive of people or organizations will not be considered;
- Letters will be edited as appropriate to maintain accepted standards of language, probity and respect for other points of view;
- The RPRA may publish a reply to letters and consult others for advice on matters involving accuracy of fact(s);
- Final printer-ready drafts of an issue are submitted to the President or Secretary of the RPRA for approval at least 2 days before the due date for submission to the printer and discussion with the Editor on content is undertaken only by the President, or nominee (usually the Board Secretary), who has responsibility for final sign-off to publish;
- The Editorial Board may refer a submission to the board of directors of the RPRA when considered advisable to do so;
- The Editor welcomes letters expressing their views and opinions about local issues (ie., Rockcliffe Park), but will not publish anonymous letters or letters deemed to be for primarily commercial purposes or relating primarily to matters not involving our community;
- This policy may be amended and updated from time to time by the RPRA Board, without notice to Members.

CALLING ALL HOSERS

As a volunteer-driven organization that keeps our rinks active in the winter and field house programs running in the summer, we could use your help!

Please contact therockcliffehosers@gmail.com if you are interested in lending a hand or taking up a larger role in our community-spirited activities. Volunteer hours are needed throughout the year, both on and off the rink. In particular, we are seeking additional help with light administrative duties for the upcoming year.

BECOME A RPRA
MEMBER OR RENEW
YOUR MEMBERSHIP

Your RPRA membership helps support the activities that enhance our community, our communications to you and our ability to represent your interests. Please join us!

Annual (per calendar year) RPRA membership fees are \$25 per household, or \$50 for two years. You can join or renew your membership by paying online (rockcliffe.ca) or fill in the downloadable membership form and send it with your cheque to 380-A Springfield Rd. Rockcliffe Park, ON K1M 0K7 or drop it in the free-standing RPRA mailbox outside the library. New residents receive a free membership for the remainder of their first year here, but we still need completed, submitted membership form so we know who you are and so you can receive our communications.

For any RPRA members who are not receiving the weekly emails from the RPRA:
Please send your current email address to communications@rockcliffepark.ca



The Rockcliffe News is the newsletter of the Rockcliffe Park Residents Association (RPRA).

Please email newsletter@rockcliffepark.ca for information. Copy may be edited for clarity, length and content. Current and past issues are posted on the RPRA website, www.rockcliffepark.ca.

Rockcliffe Park Foundation grants fund the design and printing of the Rockcliffe News newsletter. Paid advertising is not accepted.

*Newsletter Distributors:
Chris and Stephanie Barker, Rachel Baxter, Sarah Baxter, Ben Baxter, John Brooks, Alexandra and Will Colt, Jean-Guy Dumoulin, John Edmond, Linda Forrester, Harry and Maureen Freeman, Alison Green, Walter Grego, Bea Hampson, Sue Harcourt, Michele Hayman, Heather Hickling, David Jenkins, Nancy Cook-Johnson, Anthony Keith, Joan Kellett, Ana Klar, Ling Lu Langley, Peter Lewis, Sheila Macmillan, Ainsley Malhotra, Louise Meyer, Yomna Marzouk, Rodney Moore, Jane Newcombe, Claire Ouseley, Jane Panet, Moira Phillips, Iola Price, Blake Radcliffe, Gregory Sanders, Claire Schofield, Karen Shigeishi-Waite, Paul St. Louis, Mary Ann Smallwood, Imbaw Storer, Heather Sweeney, Si Taylor, Susan and Doug Taylor, Mary Taylor, Kate Struthers, Marilyn Venner, Mark Willcox, Magie Zhu*

*Door Illustrations
(Clockwise from top left):
Acacia Avenue, Acacia Avenue, Buchan Drive, Lisgar Road*