



Rockcliffe Park Foundation
Annual Appeal / RPRM Membership Drive
Page 4

Heritage Self-Guided Walk and
Heritage Plaque Unveiling Rescheduled
Page 6

Update on the
Centennial Garden Renewal Project
Page 17



Rockcliffe celebrates the season with its traditional Children's Holiday Party and Tree Lighting events, this year combined into one festive evening. Details, page 7.

Rockcliffe Park Residents Association

The Rockcliffe Park Residents Association (RPRA) is a volunteer-run membership organization. The RPRA implements and manages our community's programs. These programs are divided into our three core mandate areas: community building, heritage and environment. As well, the RPRA represents the interests of Rockcliffe Park and its residents to the city.

The RPRA board meets on the third Wednesday of the month, except July, August and December. Meetings are in the evening and are open to all.

rockcliffepark.ca

Committee Heads

Community

Lisa Cogan, Community VP

Heritage

Michele Hayman, Heritage VP

Heritage Outreach

Susan d'Aquino, Chair

Environment

Patrick Blanar, Environment VP

Board Executive

Scott Heatherington, President
John Butterfield, Treasurer
Anna Blauveldt, Corporate Secretary
Lisa Cogan, Community Vice President
Michele Hayman, Heritage Vice President
Patrick Blanar, Environment Vice President
Russell Gibson, Past President

Board Members

Chris Barker
Susan d'Aquino
Linda English
Mary Gooderham
Leo Grant
Peter Lewis
Kim Ratushny
Natalie Runoff
Gouhar Shemdin

Please Note: See page 19 of this newsletter for email addresses for the RPRA Board Executive, Committee Heads and other volunteers.

Rockcliffe Park Foundation

The Rockcliffe Park Foundation is a registered charity that works alongside the Rockcliffe Park Residents Association (RPRA). The Foundation's role is to oversee and work to raise funds for our community's programs and events.

Every year, the Foundation reaches out to our neighbours, asking for their support of our Annual Appeal. Thanks to past support, in 2024 our village funded over \$46,000 in programs in our community (for a breakdown, see the Chair's Report on the Foundation website).

There's no small contribution. Every dollar raised helps protect, enhance and enrich our community. And new this year, we are adding the renewal of the Centennial Garden to our fundraising focus.

To learn more about residents' efforts to renew the Centennial Garden, visit the Centennial Garden page on the Foundation website.

To contribute to the Annual Appeal, see the insert included with this newsletter on how to donate.

Rockcliffe Park thrives because of you – and will continue to thrive with your ongoing support.

rockcliffeparkfoundation.org

Board Members

Sarah Baxter, Chair
Ryan Kilger, Vice Chair
Sarah Waters, Treasurer
Jane Newcombe, Corporate Secretary
Marilyn Collette
Cynthia Cusinato
Kristen Healy
Elizabeth Heatherington
Paul St. Louis

Fundraising

Fund Management

Grant Making

Join us. The Foundation has been an important part of our neighbourhood for more than 25 years and we would love to have your help. Please email info@rockcliffeparkfoundation.org if you would like to get more involved in our community.



Autumn is my favourite season – I understand that the rain we had this summer has made for a particularly spectacular show of colour. Students are back in all our schools and bring joy and energy to the neighbourhood. The new school year brings additional traffic, but I am pleased that, thanks to the efforts of neighbours, speed boards are up on Buena Vista Road near Manor Avenue. They remind drivers of their speed and allow those going beyond 40 km/h to slow down. Thanks go to city staff and our councillor's office for working with residents and the RPRC to mitigate some traffic issues. The entire community is committed to the safety of students attending our schools from many parts of Ottawa.

The Ottawa New Edinburgh Club (ONEC) and the Rockcliffe Lawn Tennis Club (RLTC) have finished up their seasons and we are now looking forward to hockey at our rink and the laying of cross country trails east from the NCC River House, once the colder weather and snow arrives. My skis are waxed and my skates sharpened.

This year, on December 11, we will combine our annual Tree Lighting and Carol Sing with our Children's Holiday Party; festivities begin at 5:00 pm. Please hold the date in your calendar. Highlights will include gingerbread and cookie decorating for children, horse-drawn sleigh rides for all, performances by the Elmwood School Junior Choir and the Salvation Army brass band, and the joy of sharing the season with neighbours and friends. I hope you will join us. You will find full details on page 5 of this newsletter.

On October 16, we gathered together friends, neighbours and colleagues, along with MPP Lucille Collard, Ward Councillor Rawlson King and members of the RPRC board, to celebrate Jane Dobell – our former village councillor, the first president of the RPRC after amalgamation, Ottawa Board of Education trustee, creator of the beloved Spring Book Sale, neighbour and crusader for a stronger community. Mme Collard and Mr. King spoke eloquently in thanking Jane Dobell for her achievements. They were joined by former RPRC president Brian Dickson, who served with Jane Dobell for many years. Thank you, Jane, for, as one resident put it, your 'staggering, selfless lifetime of service.'

The new proposed Zoning Bylaw and the status of main street and minor corridors in this new regulatory framework remains of deep concern to this and neighbouring communities. To this end, Councillor King has held consultations with the RPRC and other community associations in Ward 13. The city planning department is asking community associations to comment on the first draft of the proposed Zoning Bylaw over the next five months. We have begun a dialogue with the city planning staff and others, highlighting our concern that one-size zoning does not fit all sectors of the city, particularly with respect to Hemlock Road and the need to honour provisions of the Heritage and Secondary Plans for Rockcliffe Park.

Of further interest is the need for community consultation on proposed development at 47 Beechwood Avenue in Lindenlea. Rawlson King, who is also the councillor for Lindenlea, held a community consultation on November 12 of this year via a Zoom call. The Vanier Community Association has provided extensive comments on this development application, which encompasses 5 Springfield, 12 Douglas and 47 Beechwood. To be noted is the failure of city planning staff to consult with members of the Beechwood Village Alliance as part of the pre-application consultation process. This apparently was an oversight.

As winter fast approaches, remember that our Village roads will become dark much earlier. Drivers – watch for pedestrians! Pedestrians and bicyclists – always travel facing traffic, wear light-coloured clothing and use a flashlight at night.

And note that Covid and flu shots are now available. Please take advantage of this program to keep yourself, your family and your neighbours safe and healthy during the upcoming holiday season.

Scott Heatherington, President
scottheatherington@gmail.com
613-404-2387



The Rockcliffe Park Foundation and the Rockcliffe Park Residents Association (RPR) are our two key neighbourhood organizations, linked in practice, history, and by shared values. The Foundation works closely with and provides grants that support the RPR, whose volunteer board manages and coordinates our community programs and initiatives, in addition to representing the interests of our residents. These are divided into three core mandate areas: community building, heritage and environment.

More information on these important neighbourhood organizations may be found on the websites rockcliffepark.ca and rockcliffeparkfoundation.org.

Understanding Rockcliffe Park Foundation's Annual Appeal and the RPR's Membership Drive

Each year, the Rockcliffe Park Foundation (Foundation) and the Rockcliffe Park Residents Association (RPR) reach out to residents during their Annual Appeal and Membership Drive. In this issue of the Rockcliffe News, we'll explain the purpose of both initiatives, how they differ, and the role your contributions and membership play in enhancing our community.

Help Us Do More for Our Community!

Rockcliffe Park is fortunate to have two key community organizations: the village Foundation and the village's residents association – the RPR. For over 25 years, these two volunteer-run organizations have been working together to support and strengthen our neighbourhood, each with distinct roles:

- The RPR organizes and manages the programs and events in our community; and
- The Foundation manages and raises the funds to support these programs and events.

In 2024, support from neighbours funded over \$46K initiatives and programs in our village:

- **Environmental Programs:** Ongoing water-quality testing at the Pond, maintenance of the sports field at Rockcliffe Park Public School, and care for the Jubilee Garden.
- **Community Engagement:** Six issues of our newsletter delivered to every home in Rockcliffe; updating and reprinting the Rockcliffe A to Z welcome guide.
- **Community Events:** Engaging gatherings, including the Speakers Program, the Children's Holiday Party and Tree Lighting, and Heritage East ski trail sponsorship.
- **Heritage Events:** The biennial Heritage Walk, a favourite for residents and visitors.

New this year, we are adding the renewal of the Centennial Garden to our fundraising focus.

To strengthen our Foundation and sustain these community programs, the Foundation hosts a biennial Dining with the Ambassadors event and conducts the Annual Appeal inviting neighbours to contribute. Please consider giving to your community – details on how to donate can be found in the Annual Appeal insert included with this newsletter.

The RPR, in addition to organizing our many neighbourhood programs, plays a critical role in representing Rockcliffe Park's interests with our councillor and at City Hall. A robust membership is essential for effective advocacy and outreach. We encourage every household to secure their annual membership. A membership form insert can be found in this newsletter or go online to rockcliffepark.ca/shop.

Rockcliffe Park is unique in having these two organizations working together. While the Annual Appeal and Membership Drive are separate, both are essential to maintaining the strength of our community.

Every membership and every dollar raised contributes to the community you love!

Warm regards,

Sarah Baxter, Chair
Rockcliffe Park Foundation

Lisa Cogan, Community VP
Rockcliffe Park Residents Association

How does my donation to the Rockcliffe Park Foundation Annual Appeal differ from the \$30 fee for the RPR Membership?

Donations to the Foundation grow the fund that supports the grants for our community programs and events. Your RPR membership fee, on the other hand, supports administrative costs and expenses outside the Foundation's grant-making (environment, community building and heritage) mandate. An example of an expense outside the mandate that your membership fees supports is the sponsorship of mayoral debates.

Does the Rockcliffe Park Foundation ever run capital campaigns for specific projects?

Yes. This year, the Foundation is excited to support the renewal of the Centennial Garden. While the City of Ottawa supports our efforts and is investing in this project, we need your fundraising support to complete this project.

If I have paid my membership to the RPR, should I also donate to the Rockcliffe Park Foundation?

Absolutely! The RPR Membership Drive and the Foundation's Annual Appeal are separate but both are essential for a thriving community. You can support either or both – joining the RPR doesn't require a donation to the Foundation, and vice versa. Your participation in both makes our community stronger.

Donate

Give to the Foundation's Annual Appeal

In May 2024, the Government of Canada awarded Rockcliffe the National Historic Site of Canada designation. This honour was made possible by neighbours like you who have supported our community with their efforts and contributions.

To contribute, please see the Annual Appeal insert included with this newsletter. You can donate online with a one-time or monthly contribution at rockcliffeparkfoundation.org/donate or by mailing your cheque, made payable to the Rockcliffe Park Foundation, to 25 Westward Way, Rockcliffe, ON K1L 5A8. If you have any questions, feel free to contact Jane Newcombe at info@rockcliffeparkfoundation.org.

All donations are tax-deductible, and a tax receipt will be mailed to you. Donors' names will be acknowledged in the spring issue of the Rockcliffe News.

Become an RPR Member Today

To renew your membership or to become a new member of the RPR, use the membership form insert included with this newsletter. You can drop off the completed form along with your \$30 membership fee at the mailbox in front of the entrance to the Rockcliffe Community Hall at 380 Springfield Road (or drop it through the library's book return slot on the wall if the mailbox is not in place). You can also fill out the form and pay online at rockcliffepark.ca/shop.

Where the Funds Go...

Wondering where your donations go? Here's a sample:

Soccer Field Maintenance

Your support helps keep our community soccer pitch and running track in top shape for Rockcliffe Park Public School, for children from across our neighbourhoods, and for events held by the community. Thank you for helping to maintain a vibrant space for play and activity.



Pond Water Sampling

Volunteers like Jane Newcombe dive into our popular swimming pond to collect regular water samples (E. coli every two weeks, and Nitrogen and Phosphorus monthly), ensuring its quality for residents and visitors alike. It's a team effort, with Nic Fortier chairing the Pond Working Group, Kate Dickson writing up the reports and Lola Price delivering the samples to a commercial lab for analysis. Look for Jane making a splash from May to October!

Photo, top: Seanna Kreager.

**RPR Community Committee**

Lisa Cogan, Community VP
 vp.community@rockcliffepark.ca
 ejcogan@gmail.com

Volunteers Registrar

Kate Struthers
 volunteers@rockcliffepark.ca

Eblast and Email List Coordinator

communications@rockcliffepark.ca

Rockcliffe News Editor

Cynthia Hamady
 editor@rockcliffepark.ca

Activities

Speakers Program
 Rockcliffe News and Events Email Blast
 Rockcliffe News Newsletter
 RPR Website
 Rockcliffe Park Spring Book Sale
 Tree Lighting and Carol Sing
 Children's Holiday Party
 Outdoor Movie Nights
 Heritage Walk
 Welcome Committee
 RPPS Soccer Field
 RRCRC Food Bank Support

Community News

Heritage Self-Guided Walk and Heritage Plaque Unveiling Rescheduled

Unfortunately, we were required to postpone these events until next year. Through ongoing conversations with the federal government regarding their scheduling of the ceremony, a guarantee of the timely delivery of the plaque became increasingly unlikely. After deliberation, it was decided that we would wait until we could combine the walk with the plaque unveiling ceremony. Part of the process for the selection of which houses to include on the upcoming walk started with viewing things from a broader lens. The result is that houses of former prime ministers have been included, as have some houses of historic architectural interest. Recently, the RPR has been notified that in May 2025, the Ontario Association of Architects is hosting its Annual Conference in Ottawa. They have contacted us with the hope that some of their spring tours of our neighbourhood could be jointly organized – and possibly be included in our Heritage Walk. This is a unique opportunity which we hope can be incorporated into our community celebration.

Holiday Lights and Season's Delights

Join us on Wednesday, December 11 from 5:00 to 7:00 pm in and behind the Community Hall, 380 Springfield Road, for an evening of winter magic and holiday cheer.

Celebrating the diverse and vibrant spirit of our community, regardless of which traditions we hold dear, this is a time to come together and enjoy the universal themes of light, music and togetherness. All the arrangements for holiday music, sleigh rides, children's activities, nibbles and, of course, the tree lighting and carol sing are set to go. Once again, the Elmwood Junior School Choir and the Salvation Army brass band will enchant us with their music, children will be decorating gingerbread houses and cookies, a horse-drawn sleigh will offer rides, and treats, finger foods, mulled cider and hot cocoa will be served. Find more details on the next page of this newsletter.

This year we are honoured to have Cynthia Baxter and Tom d'Aquino on hand to illuminate the tree. These two neighbours were principals in the successful creation of the Rockcliffe Park Foundation. Please join us in acknowledging their efforts by coming out and offering a round of applause. Without the ongoing financial support of the Foundation, our community activities would require an admission fee.

Reception Honouring Longtime Resident Jane Dobell

Rockcliffe Park resident Jane Dobell recently announced that she will be making a big move. As of this November, her plan is to sell her house and move to Toronto. Her family is there, as are some of her friends. See page 11 of this newsletter for photos of a reception that was held in her honour recently at the Community Hall. Hosted by the RPR, President Scott Heatherington presided over the formalities and offered our community's gratitude and thanks by presenting her with a gift bag. Her many years of dedicated and effective efforts on behalf of our community are well known to all.

Ottawa-Vanier MPP Lucille Collard presented Jane with a provincial award certificate and Councillor Rawlson King extended warm thanks on behalf of the city. Her friend and former RPR board colleague, Brian Dickson, spoke of his years of working with Jane and the warm friendship that subsequently developed between them. Natalie Runoff and her team of volunteers, Liz Heatherington, Joan and Tony Kellett, Linda McDonald, Jane Newcombe and John Schofield, all deserve a huge round of applause for organizing the event. Jane, who is generally not a fan of being in the spotlight, stayed long after the witching hour and was truly pleased.

Holiday Happenings in Rockcliffe Park



RPRM Membership Campaign

Now is the time to renew your membership or, if you are not already a member, it's definitely time to JOIN. A form is included with this newsletter, or go to our website to register and pay. Support our association by becoming a member – after all, it's only \$30.00, but every membership is crucial in allowing us to support and advocate for the residents of Rockcliffe Park. We need you!

RPRM Board Nominations

Nominations are now being accepted for 2025. Please consider joining the board; you can offer some of your time, energy – and a fresh, new perspective. Our community association does so much for the betterment of our neighbourhood – join and be a part of all we do. Send an email to Scott Heatherington, president; Anna Blauveldt, secretary; or Lisa Cogan, community VP, for further information. (Find contact info on page 19 of this newsletter.) We work hard, but we also have fun!

Community Garden at the Community Hall

These two refurbished beds, showcased in the previous issue of this newsletter, are located on the parking lot side of the Community Hall. Thanks to the generous financial donation of the Ottawa Garden Club and the kindness of those who donated the plant material – Neva Bruce, Anne Clark-Stewart, Jill Cobbett, Carol Henderson, Victoria Hutton, Patricia Padmos and Joanne Warren – all the beds are now planted with hydrangea, dogwood, a variety of perennials and wonderful bulbs. The spring will bring on a whole new 'show' of colour and plant interest.

Rideau-Rockcliffe

Community Centre Food Bank

Please give generously – 2024 has been a very, very tough year. Monetary contributions will be gratefully accepted at our December holiday event. Donations can also be made online at crrc.org. See page 12 of this newsletter to learn more about this invaluable community resource.

Lisa Cogan, Community VP

As the seasons change, so does our community, evolving into a rich tapestry of cultures and traditions. With neighbours from all over the world calling Rockcliffe Park home, the RPRM hoped our winter celebrations could reflect the diversity and vibrancy of our shared lives.

This year, we are thrilled to introduce our annual holiday celebrations as one brand new event that combines two cherished traditions: the Tree Lighting and Carol Sing, and the beloved Children's Holiday Party. This exciting fusion will bring people of all ages together to celebrate not only the winter season but the spirit of unity and joy that defines our community.

The event will take place on Wednesday, December 11 from 5:00 to 7:00 pm at the Rockcliffe Park Community Hall, 380 Springfield Road, and promises to be filled with a touch of winter wonders for all who attend.

Why the Change?

In the past, we've held two separate events – one focused on the lighting of the tree and another on holiday fun for children. But as our community continues to grow and welcome people from different traditions, we wanted to try something fresh and exciting. The new one-day celebration embraces the idea that winter is a time for everyone to come together, no matter where we're from or what traditions we may hold dear.

This occasion will celebrate the universal themes of light, music and togetherness. It's about creating moments of joy, sharing stories and making memories that unite us all during this festive season.

What to Expect

We've carefully crafted an event that combines the best of past traditions and a couple of new ideas to engage both adults and children alike. For kids, there will be a gingerbread house and cookies decorating station where young hands can create sweet (edible!) masterpieces. Horse-drawn sleigh rides winding through our beautifully decorated neighbourhood will be a magical experience for the whole family.

Tree Lighting

The highlight of the evening will be the Tree Lighting Ceremony, taking place behind the Community Hall. This year, noted Rockcliffe Park residents Cynthia Baxter and Thomas d'Aquino will do the honours. At 6:00 pm, we'll gather outside for the truly magical moment – the lighting of our magnificent spruce tree, a symbol of hope, unity, and the bright future we share together.

Before and After

For music lovers, the Elmwood Junior School Choir will lift everyone's spirits with songs celebrating the winter season before the lighting ceremony, and the Salvation Army brass band will perform traditional holiday tunes right after, leading a group singalong. Carol sheets will be provided. And for those looking to warm up, the Community Hall will offer a cozy space to enjoy hot cocoa, cider, snacks and other light fare.

Donations for the RRCRC Food Bank

Please note that at this event, as in years past, the RPRM will be collecting monetary donations for the Rideau-Rockcliffe Community Resource Centre. The need for food banks is greater than ever, so please give generously.

Bring your family, friends and neighbours. Come for the music, stay for the magic, and leave with a heart full of light.

Natalie Runoff, Event Coordinator

Get Some Big Soul This Christmas Season

The power of music is extraordinary for its ability to help us recall memories, but studies now show that listening to music and singing are also beneficial on many other levels. Music can help us unwind, stimulate the brain, reduce blood pressure and anxiety, and improve sleep quality, concentration, creativity and mental alertness.

The 120+ members of Big Soul Project Community Choir (BSP) and their in-house band, Deep Groove, know the power of music and singing. The choir's motto, Lifting You Higher, is apparent in all their upbeat music, focused on promoting hope, love, peace and empowerment.

The members of the 27-year-old choir don't just connect with each other, they also connect with the greater Ottawa community by hosting multiple concerts throughout the year to support local charitable organizations. The group was recently awarded the Community Ambassador Award for their ongoing support of the Ottawa Food Bank.

This year, Big Soul Community Choir's annual seasonal concert will be held on Saturday, December 7, and will again be fundraising for the Ottawa Food Bank. Come to the concert, starting at 7:30 pm at Carleton Dominion Chalmers Centre, 355 Cooper Street in Ottawa, and let the music of the evening transport you, connect you, inspire and recharge you. This concert is sure to entertain with its mix of funky-to-festive music that will have the audience singing along (and often dancing in the aisles!). The concert will not only lift the audience spiritually and emotionally, but will lift the community, too.

Tickets are \$25 for adults, \$15 for full-time students, and free for kids 12 and under. For more information and to purchase tickets, visit the website bigsoulproject.com/upcoming-concerts.

Martha Tobin

Books Wanted for the 2025 Rockcliffe Spring Book Sale!

Now that RPPS has concluded another very successful Book Fair, organizers and volunteers with the Rockcliffe Park Spring Book Sale (also known as the Library Sale) are once again springing into action. April 2025 may still seem a long way off, but the lead time for this type of event is several months. So if you're considering a pre-Christmas clear-out, now is the time to bring us your gently used books in English and French. Unfortunately, we are not accepting audio-visual materials (CDs, DVDs), and no magazines, textbooks or encyclopedias, please. And please also consider the condition of the items you are donating; if a book is in poor shape – mouldy, stained, yellowed, torn or badly marked – please recycle it at home in your black box.

Bring your donations to the Library (along the north wall) during opening hours (check times at bibliooottawalibrary.ca/en/branch/rockcliffe-park). Ask a librarian if you are not sure where to leave them. We have decided not to hold another Book Drive before the holidays as the calendar for many of our volunteers is already quite crowded, but if you have a sizeable donation (more than a couple of bags or boxes), please contact Jane Newcombe at 613-859-5806 or janenewcombe08@gmail.com or to arrange for a pickup.



Many thanks in advance for your contribution. Every book counts! Help us make the 2025 Sale another outstanding success and also support your library and the wonderful programming offered by our dedicated librarians. We've already received some excellent material – visitors to the Community Hall on Mondays may have noticed a group of volunteers hard at work, culling and sorting – but we still need more.

And mark your calendars now for the 2025 Rockcliffe Park Spring Book Sale. The Sale will be held in the Community Hall, 380 Springfield Road, on Saturday, April 26 and Sunday, April 27. Watch for more details in future issues of this newsletter, in email blasts and local ListSers.

Carolyn Brereton, Spring Book Sale Chair

Fun Awaits Kids, Families and Adults at the Rockcliffe Park Library

The Rockcliffe Park Library, 380 Springfield Road, has loads of exciting programming for you to enjoy this fall and winter! Much of our programming is made possible by proceeds from the annual Rockcliffe Park Spring Book Sale. See details on the previous page of this newsletter.

Come in and visit us any time or join us for any of the following programs. All registrations, where required, can be done in person at the branch, by phone, or online at bibliottawalibrary.ca/en.

Upcoming Family Programs

Family Storytime at the Library

Every Monday morning at 9:30 am
Stories, rhymes and songs for children and a parent or caregiver.
All ages. Drop-in. English program.

Pop-Up Fun for Kids

Every Thursday, 3:30 to 5:00 pm
Join us at Rockcliffe Park Branch for a different self-directed pop-up activity in either art, science, games or puzzle challenges.
Drop-in. Ages 3+ (with adult supervision)

Family Music in the Stacks: Winter Edition

Tuesday, December 10, 6:30 to 7:30 pm
Louis Mercier: *Habitant Voyageur*
Step into the enchanting world of Louis Mercier's holiday performance, where the magic of French Canadian stories, songs and dance comes to life in a captivating celebration of culture and tradition.
Drop-in.



Upcoming Adult Programs

Crafternoon

Every Monday afternoon, 1:00 to 3:00 pm
Do you like to knit, crochet, do handwork or sort? Join like-minded individuals for an enjoyable afternoon of crafting. Bring any project you are working on. Drop-in.

Rockcliffe Park Adult Book Club

First Tuesday of every month, 1:30 to 2:30 pm

- December 10, 2024: *Becoming Mrs. Lewis* by Patti Callahan Henry
- January 7, 2025: *The Many Lives of Mama Love* by Lara Love Hardin

Adult Paint Night

Thursday, December 12, 5:30 to 7:30pm
Create an original artwork with professional artist Stephanie Brownness. Get step-by-step instructions in real time as you create your own version of a pre-planned fall landscape-themed acrylic on canvas work of art. All experience levels welcome. All supplies provided! Registration required.

Martha Hodgson, Rockcliffe Park Librarian

Join Seventeen Voyces for a Concert of Christmas Gems!

Seventeen Voyces, Ottawa's premier chamber choir, directed by Ottawa musician/filmmaker Kevin Reeves, will again bring Christmas spirit to St. Bartholomew's Church, with a program of sacred and secular choral music. Join us on Sunday, December 22 for an afternoon of music sure to get you into the spirit of the season! The concert will feature a mixture of early music – a specialty of Seventeen Voyces – and festive favourites such as *I Saw Three Ships*, *Past Three O'Clock* and *Riu, Riu Chiu*. The choir may also bring back – by popular demand – a rousing rendition of *You're a Mean One, Mr. Grinch*. A clip of the choir performing this piece last year has garnered nearly 10,000 views on YouTube!

This year's Christmas concert will take place twice: first on Saturday, December 2 at 7:30 pm at St. Matthew's Anglican Church (130 Glebe Avenue, Ottawa), and on Sunday, December 22 at 4:00 pm at St. Bartholomew's Church (125 MacKay Street, Ottawa). Tickets are \$30, \$20 for students, and free for children 12 and under. Tickets can be purchased in advance online at seventenvoyces.ca/concerts or at the door (cash, credit and debit accepted). Please join us at St. Bart's on December 22 for an afternoon of delightful music, just in time for Christmas!

Clare Jackson

Choir and Board Member, Seventeen Voyces



Looking Back on Fun Times in Rockcliffe Park

Editor's Note: As the busy holiday season ramps up, take time out to look back on a couple of the more relaxed moments of the past year. Rockcliffe resident Sarah Baxter shared some photos of recent fall events in the neighbourhood.

Neighbours gathered together for a festive *al fresco* dinner, organized by Joseph Cull, Diana Sheng, John Hewitt and Sarah Baxter. It was one of the last balmy summer nights – even though it was actually September 19 and not the ‘break out your favourite flannels’ weather that had been expected when the planning began. Thirty-six people attended the event, with a sumptuous spread prepared by chefs Joseph and Diana. Sarah added, “It was a great communal effort and so much fun to get together with neighbours.”



On a glorious, clear afternoon in early October, board members of the RPR and the Rockcliffe Park Foundation were treated to a Big Canoe paddle of the Ottawa River, organized by the Ottawa New Edinburgh Club (ONEC).

RPR treasurer John Butterfield (the last paddler in the photo at right) is also ONEC's manager. He provided these photos of this unique adventure.



Recap: Path Clearing at McKay Lake November 2, 2024



At 10:00 am on Saturday, November 2, a group of approximately 16 enthusiastic volunteers met to rake the paths around McKay Lake and the Caldwell-Carver Conservation Area paths.

We aim to clear the paths of leaves at this time every year so that walkers and runners do not trip over tree roots and rocks. We rake leaves away from the fence surrounding the east side of the lake to clear routes for the turtles who climb up to lay their eggs on the other side of the path.

Because a good number of volunteers came out, we cleared the paths in little more than an hour, and then convened at the Pond for well-earned refreshments and commemorative photos.

Thanks to our rakers! (The turtles thank you, too.)

Iola Price and Marilyn Venner
Event Coordinators

Photo: Heather Sweeney, hard at work, wielding a very big rake! Photo courtesy of Jürgen Hoth.

Recap: Honouring Jane Dobell October 16, 2024



Jane Dobell, a longtime Rockcliffe resident, is known to some Village residents as an indefatigable force behind many of the initiatives the rest of us pretty much take for granted – most notably, the annual RPPS Book Fair and the Rockcliffe Park Spring Book Sale, which collectively have raised seven-figure profits for Rockcliffe Park Public School and the Ottawa Public Library, supporting library and literacy programs. She was the first president of the RPPA – from 2001 to 2004; recipient of the Order of Ottawa in 2017; and received a Senior of the Year Award from the Province of Ontario in 2021. But beyond an astounding list of accomplishments, Jane is simply known as the quintessential Villager.

On October 16, Jane was feted by friends and colleagues at reception organized by the RPPA and held at the Rockcliffe Park Community Hall. On behalf of Ottawa City Council and Mayor Mark Sutcliffe, Councillor Rawlson King and MPP Lucille Collard gave speeches and presented Jane with a certificate in recognition of her lifetime of public service. Others spoke glowingly of Jane and her indomitable spirit. Shown here are a few photos from the event.



Photos: Top: Ottawa-Vanier MPP Lucille Collard shares a smile with Jane Dobell. Photo: Amanda Jackson. Above: Current RPPA president Scott Heatherington, right, addresses the group. Seated, from left: Jane Dobell, Diana Kirkwood, Melissa Kirkwood and Brian Dickson. At left: Councillor Rawlson King presents the certificate to Jane. Seated next to Jane is Nancy Hooper. Standing, from left: Laurie Kirkwood, Carolyn Brereton and Liz Heatherington.



Rideau-Rockcliffe Resource Centre Houses Many Key Services

Did you know that the old Rideau High School on St. Laurent Boulevard has been transformed, in the past few years, into the Rideau Community Hub, housing over 30 non-profit community development organizations?

One of the main tenants is the Rideau-Rockcliffe Community Resource Centre (RRCRC), a City of Ottawa-funded organization that provides much-needed social support and programming for the Ward 13 area, which includes Manor Park, Overbrook, Rockcliffe Park, New Edinburgh, Lindenlea, CFB Rockcliffe, Viscount Alexander Park, Quarries, Cardinal Glen, Rockcliffe Mews, Forbes, Castle Heights, and parts of Carson Grove.

The old high school now offers many key services for the people in need in our community and beyond. The city funds 13 community resource centres across the region; the Rideau-Rockcliffe ward is one of the poorest areas, but receives among the lowest funding levels from the city of all the resource centres.

Creative and Efficient

Despite the chronic funding problems, the RRCRC serves the ward in numerous creative and effective ways. Under the energetic and enthusiastic leadership of Executive Director Sebastian Gaisert and backed by his dedicated team of staff and volunteers, the centre remains a vital resource for the Rideau-Rockcliffe community.

The Ottawa Food Bank's outlet for Ward 13 is the best-known program offered by the centre. This emergency food bank serves an average of over 1,300 community members in need every month, an increase this year of 35 percent. Overbrook and parts of Manor Park supply most of the residents for the various food services offered by the RRCRC.

The food bank has a well-organized distribution system, including grocery shelves, a community kitchen, home delivery, hot meals services and a community garden. The centre also manages a greenhouse and an urban hydroponic farm, allowing it to provide fresh produce to the food bank year-round.

Ottawa's food banks are straining with limited city budgets, significantly increasing demand, the steady increase in population, and rising food costs. Food banks rely heavily on donations from individuals and corporations, and a vast network of volunteers help the dedicated staff attempt to keep up with the demand. However, the ability to meet future needs remains uncertain, raising concerns about their long-term capacity to effectively serve vulnerable residents.

In addition to the various food-related services, there are several other innovative programs offered by the centre. Overall, programs and services provide important support towards poverty reduction, essential mental health support and isolation reduction. Last year, the centre served over 33,000 community members.

For children and youth, the centre has many activities, such as after school basketball, music, art and a summer kids' camp. For adults and seniors there are programs for exercising, arts and crafts, and gardening. The Incubator13 initiative provides valuable training and paid internships to youths. Last year, over 90 interns participated in meaningful job experiences.

During the last couple of years, the RRCRC has offered free tax return preparation clinics to low-income members of the community. This service eliminates the costs of preparing tax returns, keeps clients in good standing with the CRA, and enables them to benefit from the tax credits available to them. It has helped put more than \$7 million back into the pockets of Ward 13 residents and, as a result, back into the community.

Crisis intervention and short-term counselling for youths and adults is another key service the RRCRC provides. In addition, health and dental services are offered on a selective basis. Sadly, the Rideau-Rockcliffe ward does not have a city-funded community health centre like that of many other parts of Ottawa, despite the obvious need.

RRCRC-Yule Manor Co-op Programs

This past summer, an exciting new outreach program was delivered by RRCRC, in collaboration with the Yule Manor Co-op. A private donor funded an eight-week soccer session with an end-of-season tournament and party for kids ages 8 to 12. It is hoped that the program can be expanded beyond the 15 sessions held this year. Another creative outreach program, collective cooking sessions, was also held at Yule Manor. Residents got together to cook simple meals made with items they received from the food bank, with a resident facilitator to guide them. It is anticipated that this initiative will be open to others in Ward 13 in the future. This program is funded by Community Development Framework, a citywide fund that benefits many projects by partnering with other community groups. One further initiative that the centre has organized, again with Yule Manor Co-op and supported on a two-year basis by the Ontario Trillium Foundation, is a weekly coffee and snack drop-in, during which individual social support is provided in a space where all can come together and socialize. The RRCRC brings in resources and other partners with the aim of building community, learning of residents' needs and offering support.

For more on the incredible range of community services provided by the RRCRC, or to donate and/or volunteer, visit crrc.org. If you would like to speak to someone at the RRCRC, contact Gabrielle Davis at gabrielle.davis@crrc.org.

David Goldfield
RRCRC Volunteer and a Former President of
the Manor Park Community Association



I will continue to work with the Rockcliffe Park Residents Association to improve traffic safety in our neighbourhood. Working with city staff, my office is pleased that speed pavement markings have been painted on Buena Vista Road. We are intent on installing two new speed boards on the street and my office has arranged for 'Stop Ahead' signage to be installed on Lisgar Road in both approaches to Buena Vista Road in order to improve safety.

I am also pleased that the integrated water and sewer renewal project on Oakhill, Corona and Carsdale was completed by the end of October 2024. The project involved separating the combined sewer into a new sanitary sewer and new storm sewer, replacing watermain, adding traffic calming features and protecting trees, plus a complete, full road reconstruction of Oakhill Road (Acacia Avenue to Beechwood Avenue) and Corona Avenue (Acacia Avenue to Beechwood Avenue). The project also replaced the watermain and resurfaced the road on Carsdale Avenue (Acacia Avenue to Black Maple Private).

The project also added raised crosswalks and intersection narrowings on Oakhill Road and Corona Avenue at Beechwood Avenue for traffic calming. On-street parking is now prohibited on the north side of Oakhill Road and Corona Avenue in order to benefit pedestrians. With construction at an end, a temporary speed board has been installed on Acacia near Oakhill to collect traffic data.

In October, at the invitation of the RPRA, I was pleased, on behalf of Ottawa City Council and Mayor Mark Sutcliffe, to provide a certificate of recognition to Jane Dobell to honour her lifetime of public service. Education and literacy have been a common theme in Ms. Dobell's personal and professional life in Ottawa over the past 60 years. She is a professional educator, having served as an Ottawa Board of Education trustee and chair. She also played an important role in the life of the community by previously serving on the Rockcliffe Park Village Council and the Rockcliffe Park Residents Association, and was instrumental in the creation of two separate book fairs, which collectively have raised seven-figure profits for Rockcliffe Park Public School and the Ottawa Public Library to support library and literacy programs.

As always, you can contact my office by email at rideaurockcliffeward@ottawa.ca or by phone at 613-520-2483. Also, please subscribe to my newsletter at rideau-rockcliffe.ca.

Rawlson King
City Councillor for Rideau-Rockcliffe Ward
rideau-rockcliffe.ca



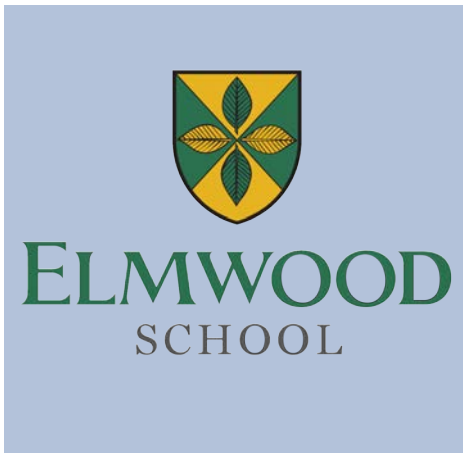
Rockcliffe is a great place to explore, and I have had the pleasure of knocking on hundreds of doors here since I first ran for MPP in 2020. I am consistently impressed by the diligence of the Rockcliffe Park Residents Association. While I must spend time in Toronto when the Ontario legislature is in session, I was glad to be here to for the celebration to recognize the contributions of Jane Dobell for her over 60 years of volunteer service in Rockcliffe Park. Thank you, Jane, for your outstanding commitment to the community.

In my work as your provincial representative, I am focused on the issues that impact our lives most. Our healthcare system is shamefully inadequate, and the Ford government refuses to properly fund hospitals and embrace commonsense solutions. I hear regularly from qualified doctors and nurses who were educated abroad and are being prevented from working in our deeply understaffed healthcare system. Improving our healthcare system needs to be a priority for the Premier, instead of focusing on banning bike lanes and building a billion-dollar tunnel in Toronto. I will continue to fight for the healthcare services that Rockcliffe deserves. Ontario needs an approach that respects healthcare workers and encourages them to settle down in our community. Education is one of my other key priorities in holding the government accountable. Class sizes are out of control, and the government isn't keeping up with population growth. Education is the foundation of our society and we must foster environments that help our children reach their full potential.

I am always open to hearing a diversity of opinions that can inform the work I do as an Opposition member at Queen's Park. If you would like to share your opinions on how to build a more prosperous Ontario, please reach out to my office at lcollard.mpp.co@liberal.ola.org.

My best wishes for a happy holiday season!

Lucille Collard, MPP for Ottawa-Vanier



Elmwood at Edinburgh Fringe Festival 2024

This past summer, a group of Elmwood students, alums and faculty flew to the UK for some time in London before heading to the Edinburgh Fringe Festival. At this year’s Festival, Elmwood Theatre presented an original show, *Artemis vs. Apollo: Clash of the Celestial Twins – High School Edition*, to international audiences, receiving praise for their maturity, skill and exceptional performances. This experience highlighted their creativity, teamwork and bravery, and we are incredibly proud of them for tackling this adventure with such ease and enthusiasm.

Women’s Summit

On October 4, Elmwood School was proud to be a lead sponsor at the second annual The Women’s Summit, a sold-out event held at the Shaw Centre in Ottawa. Co-founded by Elmwood alumna Catherine Clark of The Honest Talk, the summit brought together 350 female professionals from across the region for a day of insightful discussions on topics ranging from professional growth and personal health to financial planning and political engagement. (See photo at top.)

As part of Elmwood’s sponsorship, Elmwood students Usha Patteson and Abbie Paraskevas took the stage to announce an exciting new initiative – the launch of The Honest Talk/ Elmwood School Mentorship Program. This program, which will focus on supporting Grade 10 and 11 students, will begin in January 2025, connecting students with accomplished women from various fields and offering guidance, inspiration, and real-world insights to help shape their futures.

Also at the event, Elmwood students Hannah Vermeij and Elizabeth Chen-Baker had the honour of presenting the inaugural Women’s Leadership Award to the Honourable Michelle O’Bonsawin, the first female Indigenous Justice of the Supreme Court. Justice O’Bonsawin’s trailblazing achievements and dedication to justice made her a fitting recipient of this award.

Head of the Trent Regatta

Over the weekend of October 4-6, Elmwood’s rowing team headed off to Peterborough for the Head of the Trent Regatta. Congratulations to Tamsen Taylor and Madeleine Turner, who delivered Elmwood’s top result at this regatta. They were the top finishers in the U17 2x with a time of 20:30 mins, with second place coming in over 23:00 mins. Their time also put them in third place in the U19 2x. Incredible results for Elmwood Crew! Also in rowing news, the Grade 10s recently raced the Head of the Charles in Massachusetts – the most prestigious and competitive regatta in the world, in the U19 coxed quad. Crews from all over the world race along Boston’s iconic Charles River while 100,000 onlookers cheer them on! The team performed very well and had an incredible experience at this regatta. (Photo, below.) They strengthened their team bond, as they immersed themselves fully in the festivities of the regatta. Congratulations, Elmwood Crew!



Holly Tea and Holiday Marketplace

Elmwood will host its annual Holly Tea and Holiday Marketplace on Saturday, December 7, from 10:00 am to 4:00 pm. Join us for tea and treats from 1:00 to 4:00 pm, an all-day craft market featuring local artists, artisans, bakers and student entrepreneurs – and a visit from Santa from 11:30 am to 12:30 pm.

Admission is pay-what-you-can, and/or you can bring non-perishable food donations to support the Rideau-Rockcliffe Community Resource Centre. All are welcome; we hope to see you there.



Hitting the Ground Running

As autumn settles in, Ashbury students and staff have burst into the school year with vibrant energy and enthusiasm! The campus is alive with the colors of fall, making the most of beautiful days that have been perfect for outdoor learning and spirited fall sports. We’ve already celebrated significant events like Franco-Ontarian Day and Hispanic Appreciation Week. Marking these events adds depth and connection to our community.

Ashbury College recognized National Truth and Reconciliation Day – La Journée nationale de la vérité et de la réconciliation – in honour of the lost children and survivors of the residential school system with a full-school assembly. (Photo at right.) We were joined by guests from Kitigan Zibi who came to Ashbury to share their knowledge and help us better understand the importance of truth and how we can contribute to the reconciliation process. Each year, Ashbury also launches our school’s chiman (birchbark canoe) and also holds a smudging ceremony to reaffirm our Land Acknowledgment.

One of the highlights of our early term was the thrilling spectacle of the annual House Run. (Photo at top.) Students donned the vibrant colors of their Houses – Woollcombe, Alexander, Connaught, and New House – and cheered each other on as they traversed our beloved community loop. These friendly competitions foster a spirit of camaraderie and enthusiasm that truly embodies the Ashbury experience.

We kicked off the school year with our much-anticipated Homecoming festivities, welcoming back alumni for a heartwarming reunion. This year, we celebrated those graduating in years ending in 4 and 9, from the Class of 1959 to 2024. Alumni reconnected over receptions and sporting events, and families came together for our inspiring Terry Fox Run.



On October 24, we hosted a vibrant donor appreciation event, bringing together Ashbury’s alumni, parents, faculty and friends. Guests explored our impressive student art gallery, enjoyed inspiring performances from our choir, and took guided tours led by our enthusiastic student ambassadors. A heartfelt thank you to our generous donors for your unwavering support of our students! That same week, prospective families joined us for Admissions Information Sessions, and we held our Annual General Meeting, where we introduced a new slate of Governors to steer the development of our next Strategic Plan.

Kudos

We are always thrilled to celebrate the remarkable achievements of our talented students and recent graduates! Grade 12 student Sara Acharya was honored with a youth volunteer award at the VOscars for her incredible work with Ausome Ottawa. As Ashbury’s Community Engagement Prefect, Sara has demonstrated outstanding leadership, amassing over 1,000 hours of volunteer service in our community, from working at food banks to supporting autistic children.

On that same inspiring evening, Grade 12 student Bupa Zhang received the prestigious RBC 21 Under 21 Award for his vital role in the Youth Tutoring Project. Together with his two collaborators, Bupa has created an organization that offers free, high-quality tutoring to K-8 students, ensuring academic support is accessible to all, regardless of socio-economic status. The initiative has flourished, creating a significant impact within the community. We couldn’t be prouder of Sara and Bupa for their dedication to making the world a better place!

The Parkdale Orchestra premiered a composition by Brianna Dai ‘24 at their recent concert on November 2. Currently studying in the Faculty of Arts at Princeton University, Brianna was eager to hear her work brought to life by a live orchestra. Brava, Brianna, on this fantastic accomplishment!

Restoring Our History

Exciting plans are underway to restore the Memorial Gym, a cherished part of our history. Built in the 1920s to honor those who served in WWI, this space has evolved significantly over the decades. Ashbury’s sole gymnasium until 1985, it has transformed into a library and more.

The upcoming restoration aims to revitalize this space into a modern meeting hub for Grade and House gatherings, guest speakers, and even yoga sessions – there’s even talk of wrestling! Enhancements will include wheelchair accessibility, improved lighting and acoustics, and retractable seating to create a versatile and welcoming environment.

We can’t wait to see how these many exciting developments shape our Ashbury community!



RPR Heritage Committee
Michele Hayman, Heritage VP
mmcollum@gmail.com

RPR Heritage Outreach
Susan d'Aquino, Chair
spdott@gmail.com

Heritage Committee Members
John Cook
Marianne Feaver
Michael Kelen
Sarah Richardson
Sharda Young

**RPR Heritage Outreach
Committee Members**
Linda Dicaire
Scott Heatherington
Gouhar Shemdin

All work guided by the
Rockcliffe Park Heritage Conservation
District Plan

Update on Lighting at the Rockcliffe Lawn Tennis Club

The last issue of our newsletter reported how the Rockcliffe Lawn Tennis Club (RLTC) ignored repeated entreaties to forego their plans to introduce night lighting – out of respect for our heritage, the club's neighbours, and the night environment. It provided photos of the blinding intensity of the lights and the dramatic impact on the night sky. Sadly, the lights have had quite a devastating impact on the quality of life of close neighbours, and on the sense of community in Rockcliffe. (The photo at right, taken on a summer evening, shows the intensity of the glare on the facade of a home close to the club.)

In late October, five close neighbours met with representatives of the club. They learned that the club is investing in metal shields to reduce the intense glare of the LED lights. The final effect once all shields have been installed will be seen when the club reopens in spring.

Neighbours also complained that some club members were boisterous, intoxicated, and using the club to 'hang out' past 10:00 pm. In response, the club reported that last call for alcoholic beverages would now be set at 9:30 pm and that staff would close the clubhouse and ask members to leave at 10:00 pm.

With increased weekend and evening play prior to the club closing for the season, city Bylaw officers patrolled the area for parking infractions on surrounding streets, including parking on and damaging private property (e.g., car wheels on the grass), parking within 1.5m of a driveway, and parking on both sides of the road, thereby blocking emergency vehicle access.



Celebration of Rockcliffe Park as a National Historic Site Postponed

We have tried for some time now to get the word out that the Government of Canada's ceremony designating Rockcliffe Park a National Historic Site, originally planned for October 11, has been postponed until the spring – likely late May or June. We regret if the message did not reach everyone.

The Government of Canada informed us that unfortunately, all the pieces had not fallen into place as they had expected for an October ceremony. We very much look forward to a happy time in May or June when we will mark this rare honour. The Self-Guided Heritage Walking Tour that we had planned for the October 11-14 Thanksgiving weekend was accordingly also postponed.

We thank all the volunteers for their efforts and the interest of residents in the planned celebrations. We will announce the new date when we know it.

A Moving Encounter at Beechwood National Cemetery



On Sunday, October 20, we walked through the immense beauty of Beechwood Cemetery – perhaps the height of its glorious autumn display.

To our surprise and delight, we happened upon teams of volunteers – young and old – on their knees scrubbing headstones in the military part of the cemetery. Among the row upon row of quiet markers, in the glorious sunshine, we spoke with them. We learned that they were giving of their time and quite strenuous labour as part of an initiative of the Department of National Defence and Beechwood Cemetery to clean the markers in preparation for Remembrance Day. For some of them, this was their first time doing this; for others it was a recurring commitment, marking their abiding respect for those who have served our country.

Upon my offer of a thank you to one of them, he said simply, “It is an honour.”

Susan d’Aquino

Centennial Garden Renewal Project – Become Involved in a Community Effort

In May of this year, Rockcliffe Park received a significant honour – the designation of a National Historic Site of Canada, a recognition made possible by the generations of dedicated residents who have built and nurtured our unique neighbourhood. We are excited to now embark on another community-driven effort to restore the very heart of our village: the Centennial Garden.

A Village Landmark in Need of Renewal

Located at the heart of the Village Green and a part of Canada’s commemoration for its centennial in 1967 (see article at top), the Centennial Garden has seen decades of use and, unfortunately, wear and tear due to time, weather and snow removal. In 2021, neighbours, inspired by the original vision of landscape architect Humphrey Carver, presented a thoughtful renewal plan to restore the garden. In 2022, this plan was approved in principle by the Rockcliffe Park Foundation and the Rockcliffe Park Residents Association, and received key support from our Rideau-Rockcliffe councillor, Rawlson King. In October 2023, Ottawa City Council officially approved a matching grant to help fund this important initiative.



What Happens Next?

This past October, landscape architect Jerry Corush of CSW Landscaping was engaged to prepare concept designs and cost estimates. These will be reviewed by the city to ensure that both the plan and our community’s ability to match the required funds meet their standards. Once this is confirmed, the project will move to the next exciting phase: community consultation.

Become Involved!

The City of Ottawa expects to begin the two-part consultations in early 2025. One consultation will take place online through Engage Ottawa and the second will be an in-person meeting at our Community Hall, in collaboration with our councillor’s office. We will keep you posted as soon as these dates are confirmed by the city.

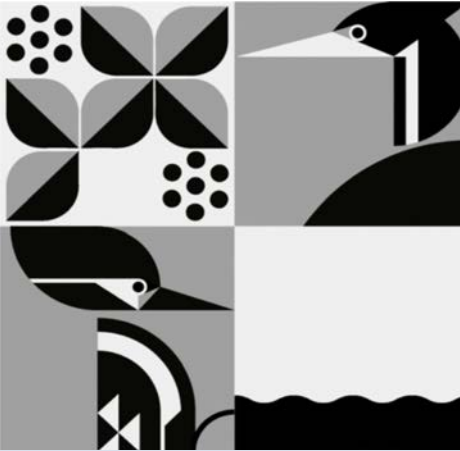
Be a Part of Rockcliffe’s Future

As we celebrate Rockcliffe’s new designation as a National Historic Site of Canada, this is the perfect time to come together and renew the historic Centennial Garden. This project is not just about preserving a piece of history – it’s about strengthening our community.

The Centennial Garden has been a gathering place for generations – a space where children from RPPS, Elmwood and Ashbury learn and play; a peaceful retreat for residents; and a beautiful landmark for visitors. We invite you to join us in making this vision a reality. Reach out to info@rockcliffeparkfoundation.org to get involved, and visit our website, rockcliffeparkfoundation.org, to learn more.

Sarah Baxter
Rockcliffe Park Foundation Chair

Photos: Left: The Centennial Garden in the Village Green is the heart of Rockcliffe Park. Above: A notice from The Ottawa Journal details the unveiling of the Centennial Project in 1967.



RPRRA Environment Committee
Patrick Blonar, Environment VP
vp.environment@rockcliffepark.ca

Iola Price, Chair
iola.price@outlook.com
environment@rockcliffepark.ca

Pond Working Group
Nic Fortier, Chair

Activities
Invasive Plant Control
The Pond
Village Spring Clean-up
Village Green and
Jubilee Garden Maintenance

Japanese Knotweed: Pretty, but Pretty Invasive

It looks pretty when in flower but Japanese knotweed is a pernicious invasive that crowds out native plants and is listed as one of the world's top 100 invasive species. Ontario's Invasive Species Act has placed it in the Restricted category, meaning that it may not be 'deposited' or 'released'.... unless you are controlling or managing it. In other words, don't buy or sell it, or give it to a someone at a plant swap. Unfortunately, it is present in some locations in Rockcliffe – notably the car park at the off-leash dog park on Hillsdale at Cloverdale, one location in the Caldwell-Carver Conservation Area, and a few private properties. It can grow up to a height of three metres (10 feet) and may have a root mass (rhizome) down as far as two metres. Unfortunately, the Ontario Invasive Plant Council's Best Management Practices document on Japanese knotweed is temporarily unavailable as it is being updated. So, what follows here is an abbreviated 'How To.' You can contact me by email at iola.price@outlook.com for further details.

I don't often recommend chemical control for an invasive plant but in the case of Japanese knotweed, it is the recommended control option on private land, especially if the stand is large. I suggest you contact a licensed weed control company and ask for advice. But in areas where chemical control is prohibited or not advisable, such as near water or next to a conservation area, mechanical control may be your only option, even though this technique can cause the plant to vigorously re-sprout in the short term; follow-through for several years will be required.

Any proposed control operation should start on the periphery of the population and work inward. Digging new sprouts which don't have roots as deep into the soil may help to contain it and continual cutting or mowing at least every three to four weeks throughout the growing season may be effective.



Cutting or mowing will stop the plant from going to seed but will not kill it. All the root mass must be removed as it will quickly resprout from even small root fragments. Cutting the growing shoots may also be effective but take care to keep them away from the ground as the plant can root from the node.

Covering the cut stems with a thick, black seam-free rubber tarp may also be effective if the tarp is extended at least a metre beyond the plants and is weighted down so that no light can enter. The tarp should be loose enough so to allow some growth to occur under it – too tight and the shoots will break though even the thickest of tarps. Be prepared to leave the tarp in place for at least two to three years and monitor it for tears.

Tarping essentially 'cooks' the plants and the soil, so new soil with beneficial mycorrhizae will probably be needed. After the tarp is lifted, plant with resilient native species such as goldenrod, asters or a native shrub. Each year, check for new knotweed plants, which can be spaded several centimetres below soil level – a step in reducing the plant's ability to use the stored carbohydrates in its roots.

Iola Price, Environment Chair

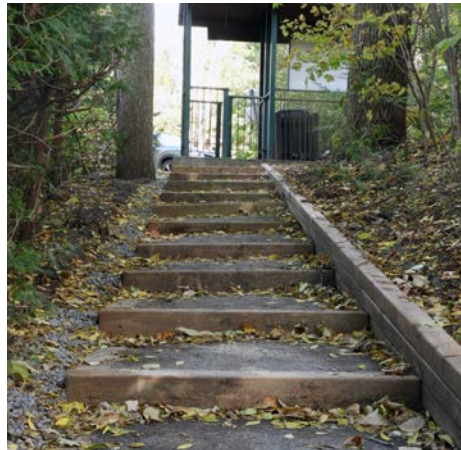
Photo: tnrd.ca.

Winter Tip #1: To keep your street clear during ice and snow season, please shovel the snow off street drains. When we get those winter thaws, the water needs to be able to get to the drain; if it is blocked, the street may flood. A bit of DIY preventive maintenance is better than waiting days for the city to come and chip away the ice and snow. If you report blocked drains to the city via 311, be prepared to wait for an operator, then describe the location, including a street name and nearby house number.

An Update on Improvements in the Village

Stairs Repair at Bittern Court

This past summer, the Parks and Facilities staff replaced the stairs to the Caldwell-Carver Conservation Area at the Bittern Court entrance. They are much improved over the original. (See photo at right.) Thanks to Peter Eddison, who alerted the city to the need for safer access to the path. Next up for repairs? Farther down the path by the sewer cover, large and irregular-shaped rocks are now exposed where rainwater washed away the surrounding soil. Another step or two at that location might be useful.



Little Bridge on the Main Path

By the time this newsletter appears in your mailbox, the 'little bridge-boardwalk' on the main trail will have been replaced. (Photo at right.) Many thanks to the city's Parks and Facilities staff, who found the funds and incorporated a wider deck so that parents and their children can look for frogs and turtles in the water while people have room to walk behind them. Perhaps the other little bridge may someday be replaced with a wider version.



Iola Price, Environment Chair



Winter Tip #2: It's that time again – the snowplows are out so move those rocks back from the pavement edge – at least 12-18 inches (30-45 cm). Same for iron and plastic road edge markers – snowplow operators need a place to deposit the snow, and our rocks and iron stakes cause damage to their snowplow blades. T-bars or markers to guide snowplow operations should be placed 12 inches (30 cm) from the pavement's edge; ensure they are not so deep as to puncture a gas line. Contact Ontario One Call at ontarioonecall.ca or 1-800-400-2255 for a free underground utilities locate.



The RPRA welcomes your input. Send your comments, questions and concerns to the appropriate RPRA member listed below.

Scott Heatherington, President
scottheatherington@gmail.com

John Butterfield, Treasurer
treasurer@rockcliffepark.ca

Anna Blauveldt, Corporate Secretary
secretary@rockcliffepark.ca

Lisa Cogan, Community VP
vp.community@rockcliffepark.ca
ejcogan@gmail.com

Michele Hayman, Heritage VP
mmcollum@gmail.com

Susan d'Aquino, Heritage Outreach Chair
spdott@gmail.com

Patrick Blonar, Environment VP
vp.environment@rockcliffepark.ca

Iola Price, Environment Chair
iola.price@outlook.com
environment@rockcliffepark.ca

Kate Struthers, Volunteers Registry
volunteers@rockcliffepark.ca

Eblast and Email List Coordinator
communications@rockcliffepark.ca

Cynthia Hamady, Rockcliffe News Editor
editor@rockcliffepark.ca

DECEMBER

07 SATURDAY 10:00 AM to 4:00 PM
Elmwood Holly Tea and Holiday Marketplace;
Elmwood School, 261 Buena Vista Road;
details on page 14 of this newsletter

07 SATURDAY 7:30 PM
Big Soul Community Choir's Annual Seasonal
Concert; Carleton Dominion Chalmers Centre,
355 Cooper Street, Ottawa; details on page 8
of this newsletter

10 TUESDAY 1:30 to 2:30 PM
Rockcliffe Park Adult Book Club: *Becoming
Mrs. Lewis* by Patti Callahan Henry; Rockcliffe
Park Library, 380 Springfield Road; details on
page 9 of this newsletter

10 TUESDAY 6:30 to 7:30 PM
Family Music in the Stacks: Winter Edition: Louis
Mercier, *Habitant Voyageur*; Rockcliffe Park
Library, 380 Springfield Road; details on page 9
of this newsletter

11 WEDNESDAY 5:00 to 7:00 PM
Holiday Lights and Season's Delights:
Children's Holiday Party and Tree Lighting
Ceremony; Rockcliffe Park Community Hall,
380 Springfield Road; all are welcome;
details on page 7 of this newsletter

12 THURSDAY 5:30 to 7:30 PM
Library Program: Adult Paint Night; Rockcliffe
Park Library, 380 Springfield Road; details on
page 9 of this newsletter

22 SUNDAY 4:00 PM
Seventeen Voyces Christmas Concert;
St. Bartholomew's Church, 125 MacKay Street,
Ottawa; details on page 9 of this newsletter

JANUARY 2025

07 TUESDAY 1:30 to 2:30 PM
Rockcliffe Park Adult Book Club: *The Many
Lives of Mama Love* by Lara Love Hardin;
Rockcliffe Park Library, 380 Springfield Road;
details on page 9 of this newsletter

15 WEDNESDAY 7:00 PM
RPRA Board Meeting; Rockcliffe Park
Community Hall, 380 Springfield Road;
all are welcome

 **HAPPY HOLIDAYS
FROM THE
ROCKCLIFFE PARK
RESIDENTS
ASSOCIATION**

The Rockcliffe News, the newsletter of the Rockcliffe Park Residents Association (RPRA), is published six times a year, in January, March, May, July, September and November, and delivered to every household in Rockcliffe Park. Current and back issues are posted online at rockcliffepark.ca. Submissions are welcome; email editor@rockcliffepark.ca for deadlines. Copy may be edited for clarity or length. Paid advertising is not accepted. Send comments, questions and submissions to editor@rockcliffepark.ca. The Rockcliffe News is supported by grants from the Rockcliffe Park Foundation. Many thanks to the proofreaders and delivery volunteers. Editor: Cynthia Hamady. Please Note: Your involvement in our neighbourhood organizations helps us represent your interests to the local community, the City of Ottawa and beyond. To find out more about the RPRA, or to become a member (\$30 per year/family), see rockcliffepark.ca or contact secretary@rockcliffepark.ca. To become involved with the Rockcliffe Park Foundation, email info@rockcliffeparkfoundation.org.

End Note: One More Thing... We leave you with a local 'Lost Dog' story. In October of this year, six-year-old Village resident Ponyo, seen here, escaped from her home at Manor Avenue and Coltrin Road when a contractor accidentally left a gate open. Her distraught owner posted this plea on Facebook with the group Lost & Found Pets Of Ottawa And Surrounding Areas: "Her name is Ponyo and she is very friendly – likely scared and frightened. She might be hiding in sheds or gardens as she's been missing over 32 hours now. She was last spotted around 2:45 pm on October 18 and not seen since. My family and I have walked the parks surrounding Rockcliffe and New Edinburgh and the roads in the area many times with no luck. Any leads or spotting please let me know." Then later: "UPDATE: PONYO FOUND! She was found 135 km away in Quebec..." So how the heck did Ponyo end up in Quebec?? A construction worker on another site a few blocks away spotted the pup surrounded by a flock of wild turkeys, which made her nervous, so she picked up Ponyo, and since it was the end of the day on Friday, she took the dog home – 135 km away from Rockcliffe. A few days later, the construction site's boss noticed one of the 'Missing Dog' posters the family had put up and connected them with the construction worker. Happily, a feel-good end to the story – and to the year! Best wishes for a very happy 2025 from the Rockcliffe News.

